

SYMBOL KEY

LIGHTING INSTRUMENTS

- ETC Source4 LED2DS 19'
- ETC Source4 LED2DS 24'
- ETC Source4 LED2DS 36'
- ETC Source4 15'-30' Zoom 750w
- ETC Source4 10' 750w
- ETC Source4 14' 750w
- ETC Source4 19' 750w
- ETC Source4 24' 750w
- ETC Source4 36' 750w
- ETC Source4 50' 750w
- ETC Source4 Seachanger 19' 750w
- ETC Source4 PAR NSP 575w
- ETC Source4 PAR MFL 575w
- ETC Source4 PAR WFL 575w
- PAR G4 MFL (STEEL CANN) kW
- PAR G4 WFL (STEEL CANN) kW
- LSE & Circuit Altman Cyc. Light kW
- High End Solaframe Theater 500w
- Martin TWL Narrow Lens 1239w
- Martin TWL Medium Lens 1239w
- VariLite 2500 Spot 700w
- Super Trouper Short Throw Spot 12 kW
- Practical Chauvet ColorDash
- DMX Spot
- Freedom Par

ACCESSORIES

- 75' Forerunner Scroller
- 14' Side Arm
- 625' Top Hat
- 75' Top Hat
- 10' Top Hat
- 75' 4 Leaf Barn Door

SFX

- MicroFogger 3 Lite
- Crew Operated
- Rosco Delta 3000 Fogger w/ DMX
- MDG Hazer with Tank

LEGEND

- CHANNEL
- 1750w GOV LAMP
- 1575w GOV LAMP
- INSTRUMENT + TEMPLATE
- RIS
- COLOR SCROLLER
- COLOR

THIS DRAWING REPRESENTS VISUAL CONCEPTS AND CONSTRUCTION SUGGESTIONS ONLY. IT DOES NOT REPLACE THE KNOWLEDGE AND PRICES OF A LICENSED STRUCTURAL ENGINEER. THE DESIGNERS ARE UNQUALIFIED TO DETERMINE THE STRUCTURAL APPROPRIATENESS OF THIS DESIGN AND WILL NOT ASSUME RESPONSIBILITY FOR PROPER ENGINEERING OR USE.

MATTHEW J. WEISGABLE
LIGHTING DESIGN

Matthew J. Weisgable
633 Burton Street
Pittsburgh, PA 15217
E: mweisg@att.net
P: 412-261-8900

Director: KATHERINE CARTER
Scene Design: PETER RULE
Assistant Lighting Designer: JAMES GALLO
Lighting Manager: MELANIE HOLCOMB
Assistant Lighting Manager: SASHA PILEY
EOS Programmer: BRIDGET DOHERTY
BRODIE DOHERTY

Carnegie Mellon University
School of Drama

PHILIP CHOSKY THEATRE
4908 Forbes Ave.
Pittsburgh, PA 15219

L'ENFANT ET LES SORTILÈGES
LIBRETTO BY: SIDONIE-GABRIELLE COLETTE
MUSIC BY: MAURICE RAVEL

& CENDRILLON
BY: PAULINE YVONNE
DIRECTED BY: KATHERINE CARTER
PHILIP CHOSKY THEATRE | JANUARY 27th - JANUARY 30th, 2021

PRINT PAPER SIZE: **ARCH E**

REV	REVISION	DATE
1	FINAL	01/26/21
2	1st Pass	01/21/21
3	2nd Pass	01/15/21
4	Rough Plot	01/04/21

SCALE: 1/4" = 1'-0"

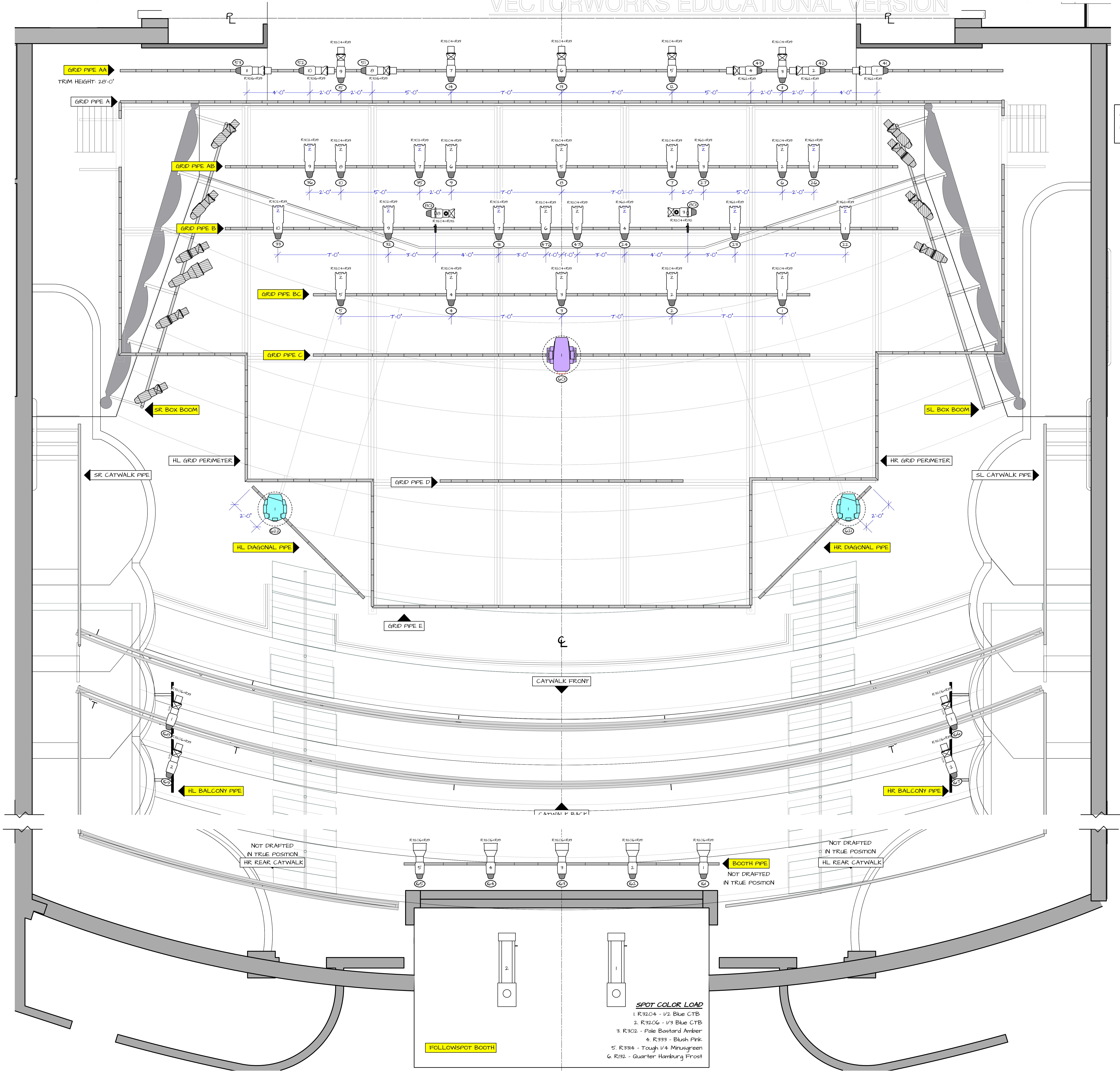
DRAWN BY: Matt J. Weisgable

CREATED: 10/26/21

FILE: L'Enfant/Cendrillon.vwx

PLATE 1 OF 7

COMPOSITE GROUNDPLAN



SYMBOL KEY

LIGHTING INSTRUMENTS

- ETC Source4 LED2DS 19'
- ETC Source4 LED2DS 24'
- ETC Source4 LED2DS 36'
- ETC Source4 15'30' Zoom 750w
- ETC Source4 10' 750w
- ETC Source4 14' 750w
- ETC Source4 19' 750w
- ETC Source4 24' 750w
- ETC Source4 36' 750w
- ETC Source4 50' 750w
- ETC Source4 Seachanger 19' 750w
- ETC Source4 Seachanger 24' 750w
- ETC Source4 PAR NSP 575w
- ETC Source4 PAR MFL 575w
- ETC Source4 PAR WFL 575w
- PAR G4 MFL (STEEL CAN) kW
- PAR G4 WFL (STEEL CAN) kW
- LSE G Circuit Altman Cyc Light kW
- High End Solaframe Theater 500w
- Martin TW1 Narrow Lens 1239w
- Martin TW1 Medium Lens 1239w
- VariLite 2500 Spot 700w
- Super Trouper Short Throw Spot 12 kW
- Practical Chauvet ColorDash Accent DMX Spot Freedom Par

NOTES
Please Drop All Accessories, Gobos, and Color prior to Focus.

Fixture Modes
Solaframe Theater: Solaframe Theater [17] + 10
Martin TW1 Internal Dimmer: Extended [10] + 10
VariLite 2500 Spot [12] + 10
ETC Lustr: Direct Stroke [17]
ETC Seachanger: 4 Channel [14]
Chauvet DJ Freedom Par: Quad 4 Ach [14]
Chauvet ColorDash Accent: Quad Ach [14]
Ganton: 7 MD07 [14]

ACCESSORIES

- 75' Forerunner Scroller
- 14' Side Arm
- 625' Top Hat
- 75' Top Hat
- 10' Top Hat
- 75' 4 Leaf Barn Door
- MicroFogger 3 Lite Crew Operated
- Rosco Delta 3000 Fogger w/ DMX
- MDG Hazer with Tank

LEGEND

- CHANNEL
- 1750w GOV LAMP
- 750w GOV LAMP
- INSTRUMENT + TEMPLATE
- YOKES
- COLOR SCROLLER
- COLOR
- RIS
- LULL 1200 DEGREE

THIS DRAWING REPRESENTS VISUAL CONCEPTS AND CONSTRUCTION SUGGESTIONS ONLY. IT DOES NOT REPLACE THE KNOWLEDGE AND ADVICE OF A LICENSED STRUCTURAL ENGINEER. THE DESIGNERS ARE UNQUALIFIED TO DETERMINE THE STRUCTURAL APPROPRIATENESS OF THIS DESIGN AND WILL NOT ASSUME RESPONSIBILITY FOR ANY STRUCTURAL ENGINEERING OR USE.

MATTHEW J. WEISGABLE
LIGHTING DESIGN
Matthew J. Weisgable
632 Brunson Street
Pittsburgh, PA 15217
E: mweisg@att.net
P: 412-341-3909

Director: KATHERINE CARTER
Scene Design: PETER RULE
Assistant Lighting Designer: JAMES GALLO
Lighting Manager: MELANIE HOLCOMB
Assistant Lighting Manager: SASHA PHELPS
EOS Programmer: BRIDGET DOHERTY

Carnegie Mellon University School of Drama
PHILIP CHOSKY THEATRE
4900 Forbes Ave.
Pittsburgh, PA 15219

L'ENFANT ET LES SORTILÈGES
MUSIC BY MAURICE RAVEL
LIBRETTO BY SIDONIE-GABRIELLE COLLETTE
&
CENDRILLON
BY PAULINE TARRUS
DIRECTED BY KATHERINE CARTER
PHILIP CHOSKY THEATRE JANUARY 27th - JANUARY 30th, 2021

PRINT PAPER SIZE: **ARCH E**

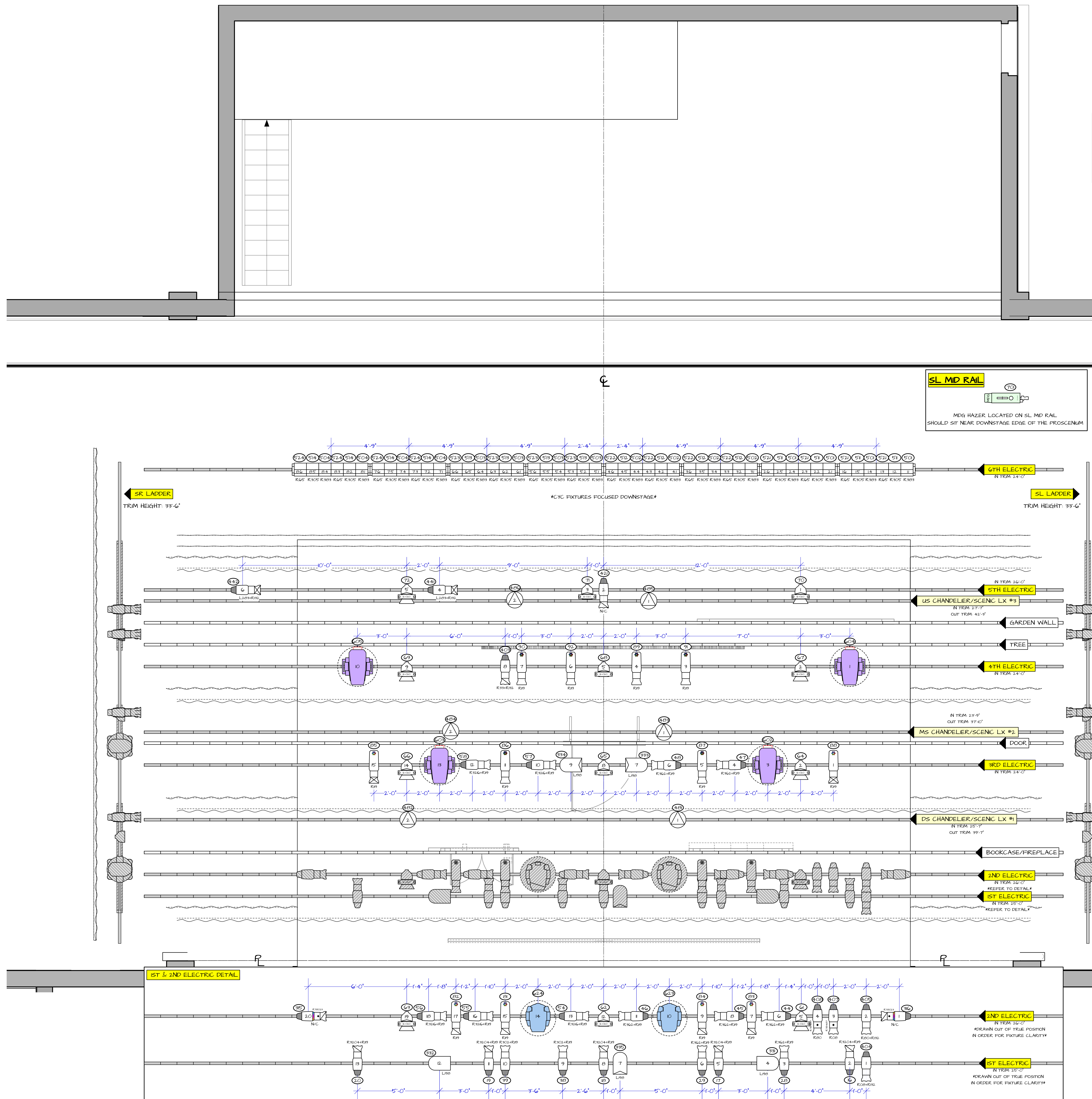
REV	REVISION	DATE
1	FINAL	01/26/21
2	1st Pass	1/29/21
3	2nd Pass	1/25/21
4	Rough Plot	10/26/20

SCALE: 1/2" = 1'-0"
DRAWN BY: Matt J. Weisgable
CREATED: 10/26/20
FILE: L'Enfant/Cendrillon.vwx

PLATE **2** OF 7
TENSION GRID GROUNDPLAN

SPOT COLOR LOAD

1. R3204 - 1/2 Blue CTB
2. R3206 - 1/3 Blue CTB
3. R302 - Pale Bastard Amber
4. R333 - Blush Pink
5. R334 - Tough 1/4 Munsiegreen
6. R192 - Quarter Hamburg Frost



NOTES

- All Trim Heights are from the bottom of the pipe, NOT the lighting fixture.
- Please Drop All Accessories, Gobos, and Color prior to Focus.
- For Focus refer to scenic configuration drawing.

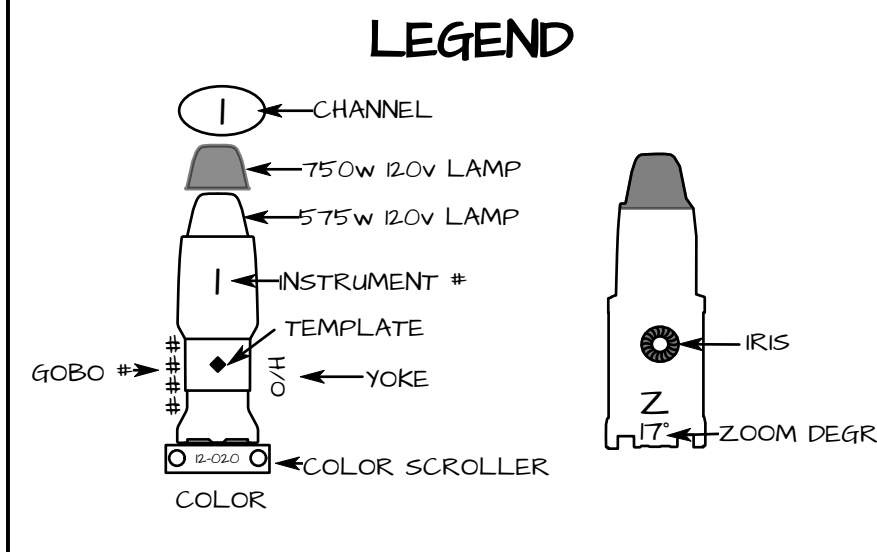
Fixture Modes

- SolaFrame Theatre SolaFrame Theatre [4*] + 10
- Martin TMX Internal Dimmer Extended [20] + 10
- VariLite 2500 Spot [2] + 10
- ETC Luatr Direct Stroke [9]
- ETC Seachanger 4 Channel [4]
- Chauvet DJ Freedom Par Quad 4 4ch [4]
- Chauvet ColorDash Accent Quad 4ch [4]
- Gantom 7 M507 [1]

Linepost #	Place	Dist. From FL	In Trim Height	Out Trim Height
52	SR Ladders	38'-0"	33'-6"	
51	SR Tabs	37'-4"	15'-6"	
50	SL Tabs	36'-0"	15'-6"	
49	SL Ladders	36'-0"	33'-6"	
48		35'-3"		
47		34'-7"		
46		33'-4"		
45		33'-3"		
44		32'-7"		
43		31'-4"		
42		30'-7"		
41	6TH ELECTRIC	29'-4"	24'-0"	
40		29'-3"		
39		28'-7"		
38		27'-4"		
37		27'-3"		
36		26'-7"		
35	CYC	25'-4"	30'-0"	
34	SCRM	25'-3"	30'-0"	
33	4TH LEG	24'-7"	32'-0"	
32	4TH BORDER	23'-4"	20'-0"	
31	5TH ELECTRIC	22'-7"	26'-0"	
30	US CHANDELER/SCENC LX #3	21'-4"	27'-7"	42'-3"
29		21'-3"		
28	GARDEN WALL	20'-7"	23'-4"	46'-8"
27		19'-4"		
26	TREE	19'-3"	22'-1"	44'-2"
25		18'-7"		
24	4TH ELECTRIC	17'-4"	24'-0"	
23		17'-3"		
22	3RD LEG	16'-7"	32'-0"	
21	3RD BORDER	15'-4"	20'-0"	
20		14'-7"		
19	MS CHANDELER/SCENC LX #2	13'-4"	23'-9"	37'-10"
18	DOOR	13'-3"	23'-0"	47'-7"
17		12'-7"		
16	3RD ELECTRIC	11'-4"	25'-0"	
15		11'-3"		
14		10'-7"		
13	2nd LEGS	9'-4"	32'-0"	
12	2nd BORDER	9'-3"	20'-0"	
11	DS CHANDELER/SCENC LX #1	8'-7"	25'-7"	39'-7"
10		7'-4"		
9	BOOKCASE/FIREPLACE	6'-7"	24'-3"	57'-4"
8		5'-4"		
7	2ND ELECTRIC	5'-3"	26'-0"	
6		4'-7"		
5	1ST ELECTRIC	3'-4"	25'-0"	
4	1st LEGS	3'-3"	32'-0"	
3	1st BORDER	2'-7"	21'-0"	
2	MAIN CURTAIN	1'-4"		
1	M. VALENCE/SUPERTITLE SCRIN	1'-3"		

SYMBOL KEY

- LIGHTING INSTRUMENTS**
- ETC Source4 LED2DS 19'
 - ETC Source4 LED2DS 26'
 - ETC Source4 LED2DS 36'
 - ETC Source4 15'-30' Zoom 750w
 - ETC Source4 14' 750w
 - ETC Source4 19' 750w
 - ETC Source4 26' 750w
 - ETC Source4 36' 750w
 - ETC Source4 50' 750w
 - ETC Source4 Seachanger 19' 750w
 - ETC Source4 PAR NSP 1575w
 - ETC Source4 PAR MFL 1575w
 - ETC Source4 PAR WFL 1575w
 - PAR G4 WFL (STEEL CAN) 1kW
 - PAR G4 WFL (STEEL CAN) 1kW
 - LSE G Circuit Altman Cyc Light 1kW
 - High End SolaFrame Theater 500w
 - Martin TMX Narrow Lens 1239w
 - Martin TMX Medium Lens 1239w
 - VariLite 2500 Spot 700w
 - Super Trouper Short Throw Spot 12 kW
 - Practical Chauvet ColorDash Accent
 - Gantom DMX Spot
 - Chauvet DJ Freedom Par
- ACCESSORIES**
- 75' Fore-runner Scroller
 - 14' Side Arm
 - 625' Top Hat
 - 75' Top Hat
 - 10' Top Hat
 - 75' 4 Leaf Barn Door
 - MacroFogger 3 Lite
 - MacroFogger 3 Lite
 - Rosco Delta 3000 Fogger w/ DMX
 - MDG Hazer with Tank



THIS DRAWING REPRESENTS VISUAL CONCEPTS AND CONSTRUCTION. SUGGESTIONS ONLY. IT DOES NOT REPLACE THE KNOWLEDGE AND JUDICE OF A LICENSED STRUCTURAL ENGINEER. THE DESIGNERS ARE UNABLE TO DETERMINE THE STRUCTURAL APPROPRIATENESS OF THIS DESIGN AND WILL NOT ASSUME RESPONSIBILITY FOR ANY STRUCTURAL ENGINEERING OR USE.

MATTHEW J. WEISGABLE
LIGHTING DESIGN

Director: KATHERINE CARTER
 Scenic Design: PETER RULE
 Assistant Lighting Designer: JAMES GALLO
 Lighting Manager: MELANIE HOLCOMB
 Assistant Lighting Manager: SASHA PILEY
 EOS Programmer: BRIDGET DOHERTY
 BRIDGET DOHERTY

Carnegie Mellon University
School of Drama

PHILIP CHOSKY THEATRE
 4900 Forbes Ave.
 Pittsburgh, PA 15219

L'ENFANT ET LES SORTILÈGES
 MUSIC BY MAURICE RAVEL
 LIBRETTO BY SIDONIE-GABRIELLE COLLETTE
 &
CENDRILLON
 BY PAULINE FERRIER
 DIRECTED BY KATHERINE CARTER
 PHILIP CHOSKY THEATRE | JANUARY 27th - JANUARY 30th, 2021

PRINT PAPER SIZE: **ARCH E**

REV	REVISION	DATE
1	FINAL	01/26/21
2	3rd Pass	1/29/21
3	2nd Pass	1/25/21
4	Reup Plot	10/26/20

SCALE: 1/2" = 1'-0"

DRAWN BY: Matt J. Weisgable

CREATED: 10/26/20

FILE: L'Enfant/Cendrillon.vwx

PLATE: **3** OF 7

OVERHEAD GROUNDPLAN

SYMBOL KEY

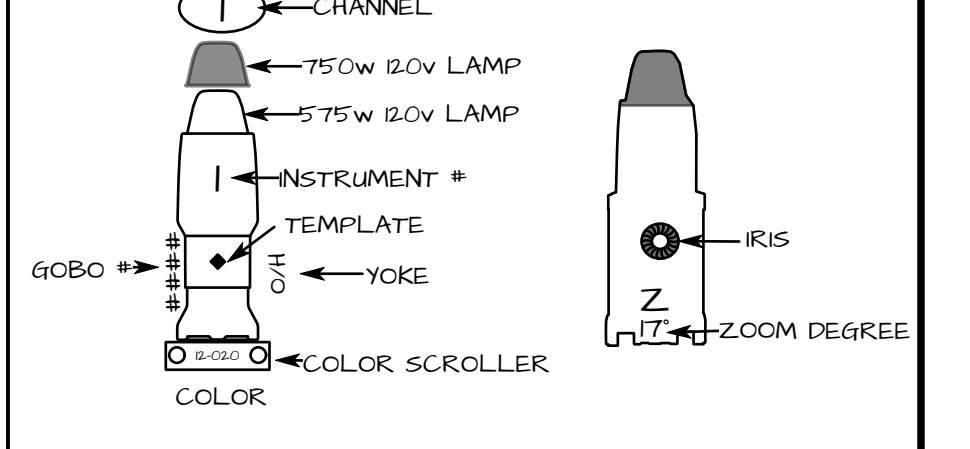
LIGHTING INSTRUMENTS

- ETC Source4 LED2DS 19'
- ETC Source4 LED2DS 26'
- ETC Source4 LED2DS 36'
- ETC Source4 15'-30' Zoom 750w
- ETC Source4 10' 750w
- ETC Source4 14' 750w
- ETC Source4 19' 750w
- ETC Source4 26' 750w
- ETC Source4 36' 750w
- ETC Source4 50' 750w
- ETC Source4 Seachanger 19' 750w
- ETC Source4 Seachanger 26' 750w
- ETC Source4 PAR NSP 575w
- ETC Source4 PAR MFL 575w
- ETC Source4 PAR WFL 575w
- PAR G4 MFL (STEEL CAN) kW
- PAR G4 WFL (STEEL CAN) kW
- LSE G Circuit Altman Cyc Light kW
- High End SoliFrame Theater 500w
- Martin TMI Narrow Lens 1239w
- Martin TMI Medium Lens 1239w
- VariLite 2500 Spot 700w
- Super Trouper Short Throw Spot 12 kW
- Practical Chauvet ColorDash Gantom DMX Spot Freedom Par Accent Gantom Chauvet DJ Freedom Par

ACCESSORIES

- 75' ForeRunner Scroller
- 14' Side Arm
- 625' Top Hat 75' Top Hat 10' Top Hat 75' 4 Leaf Barn Door
- SFX MicroFogger 3 Lite Crew Operated Rosco Delta 3000 Fogger w/ DMX MDG Hazer with Tank

LEGEND



THIS DRAWING REPRESENTS VISUAL CONCEPTS AND CONSTRUCTION SUGGESTIONS ONLY. IT DOES NOT REPLACE THE KNOWLEDGE AND ADVICE OF A LICENSED STRUCTURAL ENGINEER. THE DESIGNERS ARE UNWILLING TO DETERMINE THE STRUCTURAL APPROPRIATENESS OF THIS DESIGN AND WILL NOT ASSUME RESPONSIBILITY FOR ANY STRUCTURAL ENGINEERING OR USE.

MATTHEW J. WEISGABLE

Lighting Design
Matthew J. Weisgable
632 Bunker Street
Pittsburgh, PA 15217
E: mweisg@duke.edu
P: 412-261-2000

Director: KATHERINE CARTER
Scenic Design: PETER RULE
Assistant Lighting Designer: JAMES GALLO
Lighting Manager: MELANIE HOLCOMB
Assistant Lighting Manager: SASHA PILEY
EOS Programmer: BRIDGET DOHERTY
BRIAN DOHERTY

Carnegie Mellon University PHILIP CHOSKY THEATRE
School of Drama 4900 Forbes Ave.
Pittsburgh, PA 15219

L'ENFANT ET LES SORTILÈGES
LIBRETTO BY: SIDONIE-GABRIELLE COLETTE
&
CENDRILLON
OPERA
DIRECTED BY: MATTHEW CARTER
PHILIP CHOSKY THEATRE JANUARY 27th - JANUARY 30th, 2021

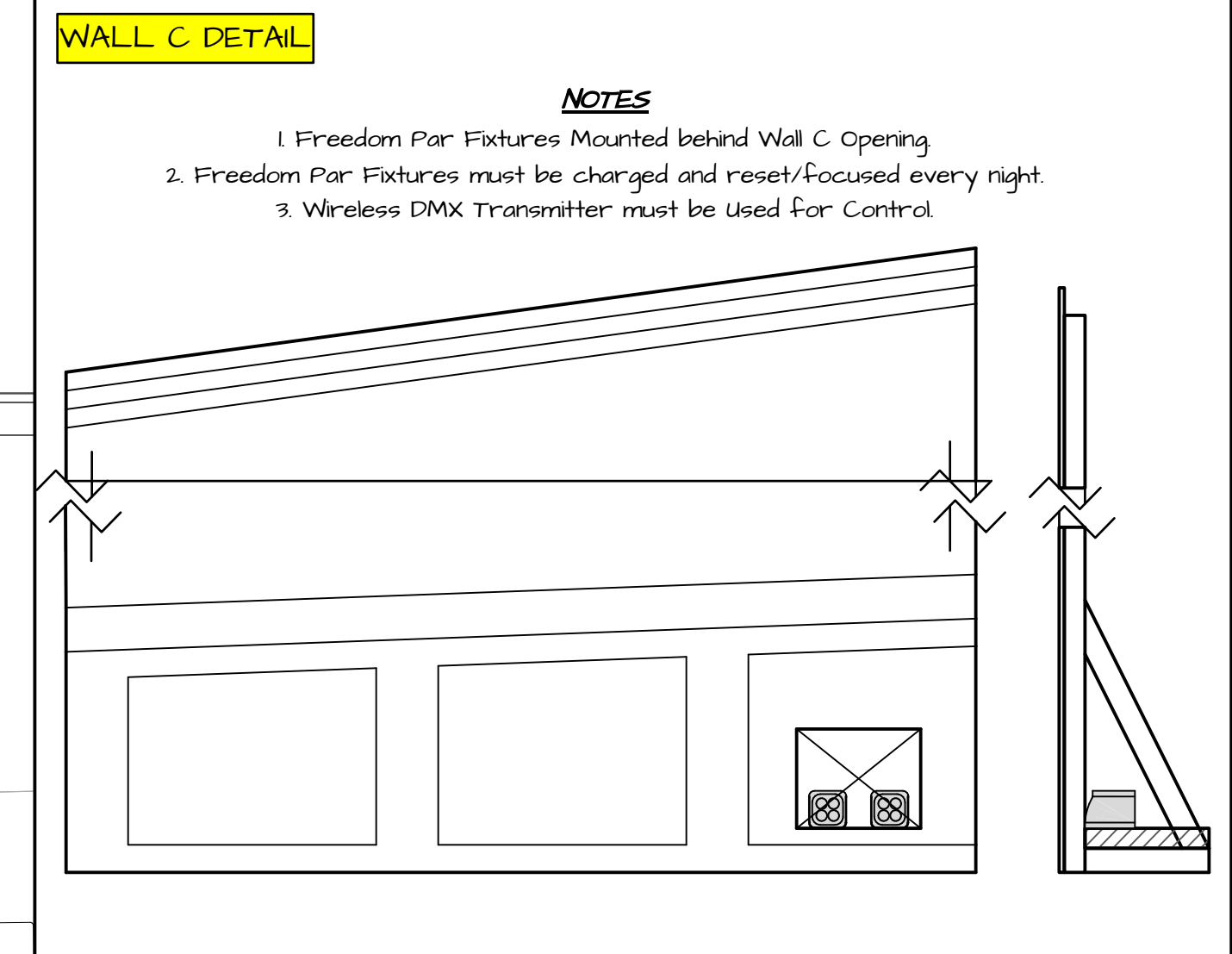
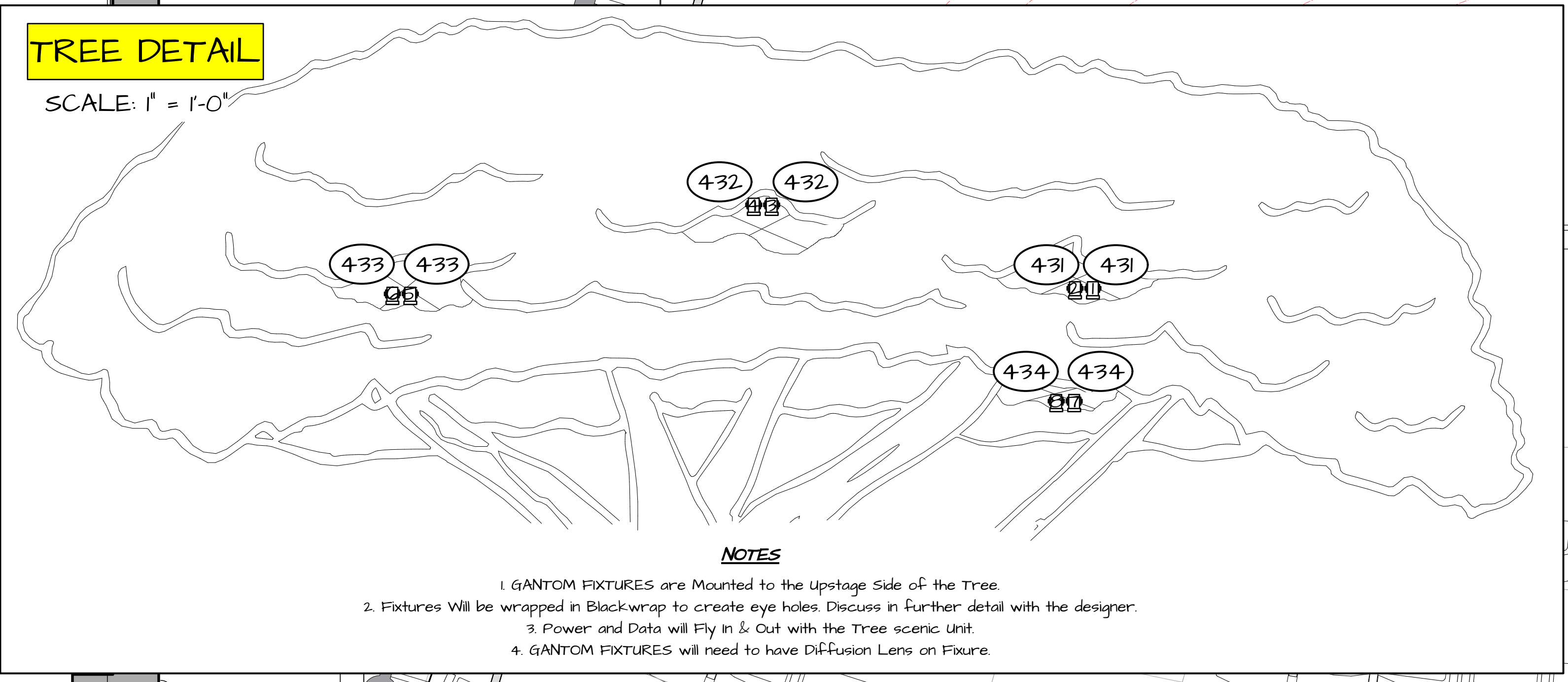
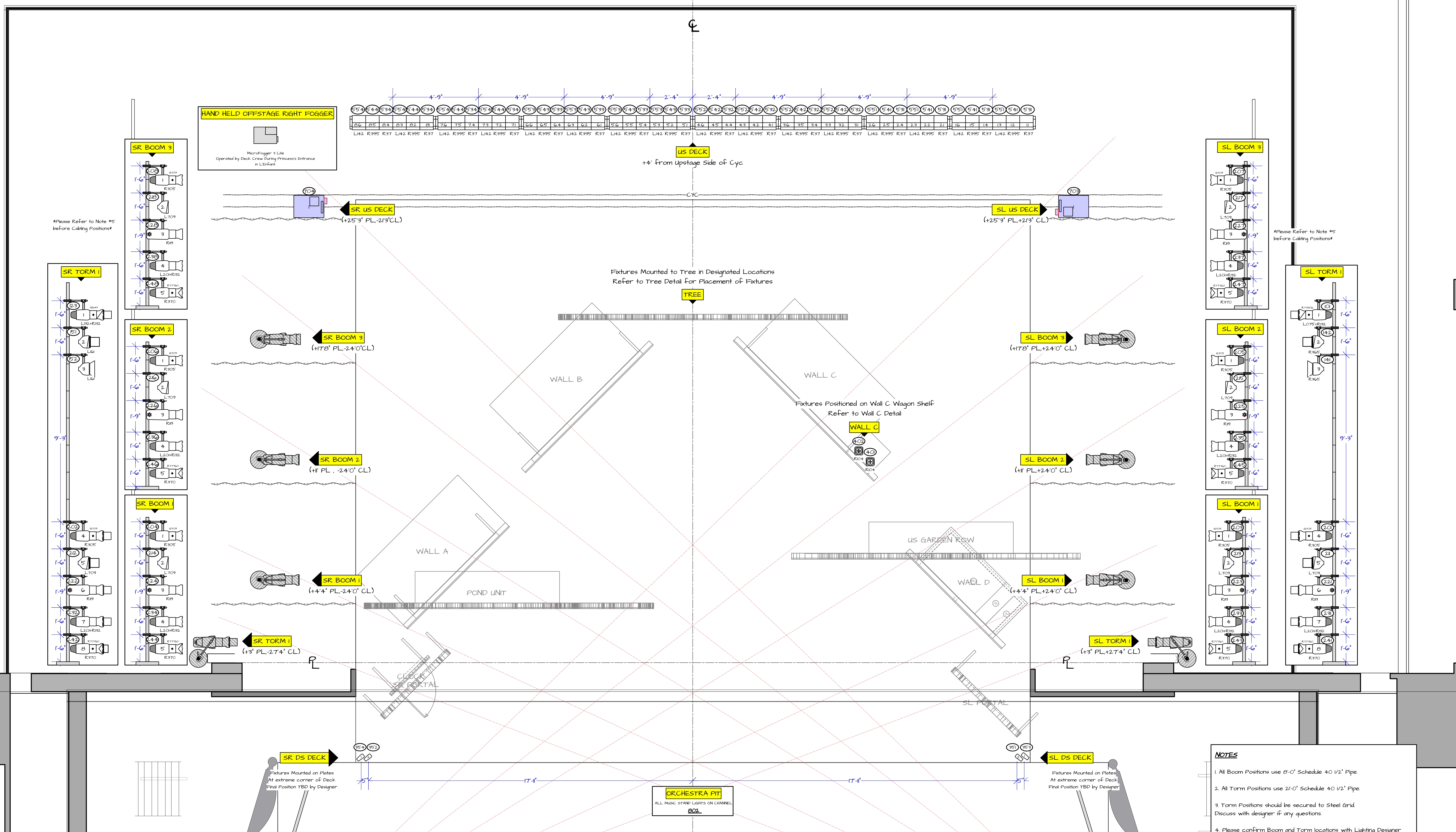
PRINT PAPER SIZE: **ARCH E**

REV	REVISION	DATE
1	FINAL	01/26/21
2	1st Pass	1/29/21
3	2nd Pass	1/25/21
4	Rough Plot	1/26/21

SCALE: 1/2" = 1'-0"
DRAWN BY: Matt J. Weisgable
CREATED: 10/26/21
FILE: L'Enfant/Cendrillon.vwx

PLATE **4** OF 7

DECK GROUNDPLAN

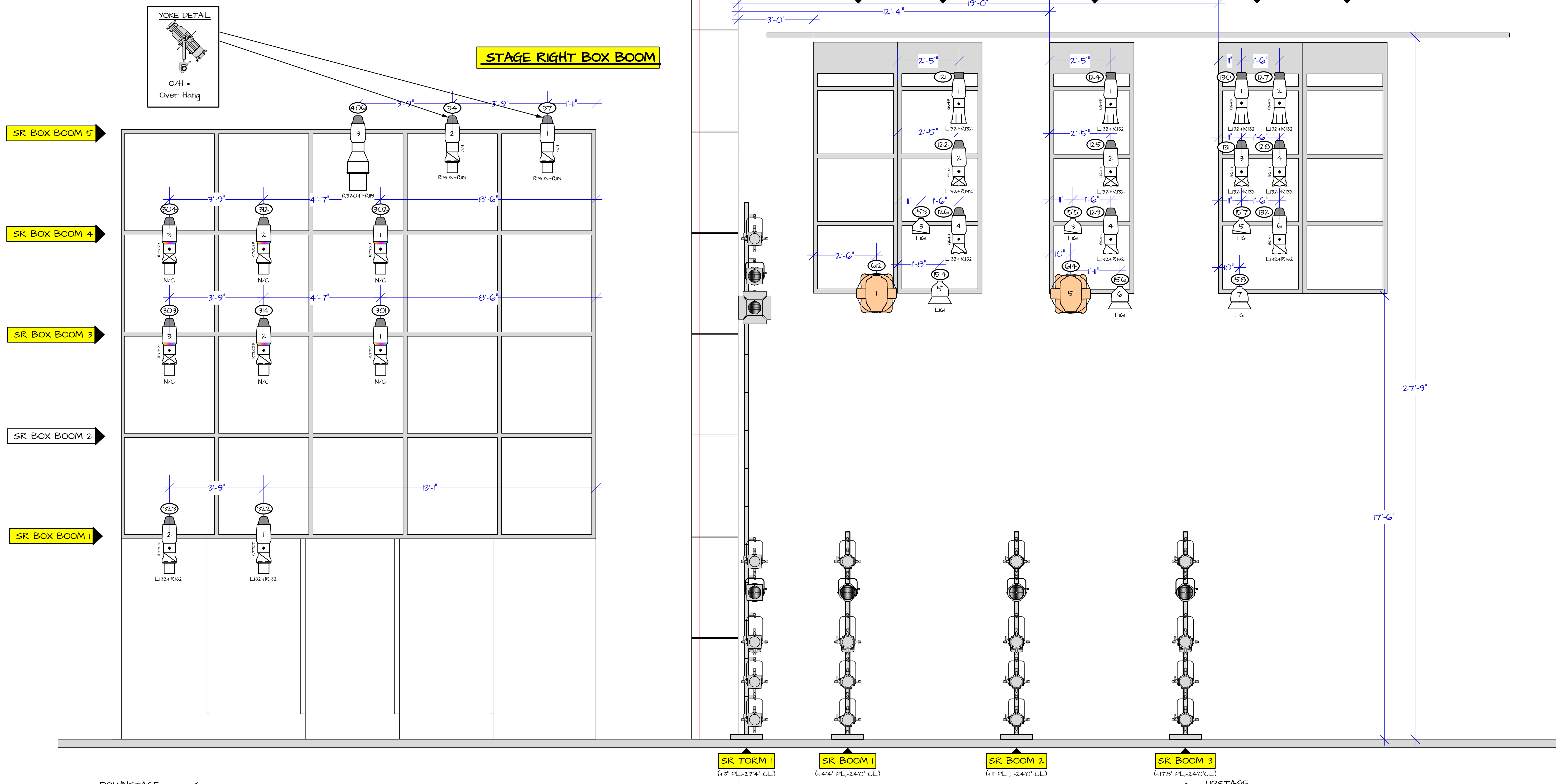


- NOTES**
- All Boom Positions use 8'-0" Schedule 40 1/2" Pipe.
 - All Torm Positions use 2'-0" Schedule 40 1/2" Pipe.
 - Torm Positions should be secured to Steel Grid. Discuss with designer if any questions.
 - Please confirm Boom and Torm locations with Lighting Designer before permanently securing to the deck.
 - NO CABLE PATHS TO THE BOOMS/TORMS CAN BE ON THE DECK. All cable must come from steel grid due to scenic unit storage during scene changes.
 - Please confirm Footlight position with Lighting Designer.
 - Please drop ALL Color, Gobos, and Accessories prior to focus.

Fixture Modes
SoliFrame Theater, SoliFrame Theater [47] + 30
Martin TMI Internal Dimmer Extended [50] + 30
VariLite 2500 Spot [51] + 30
ETC Light Direct Stroke [9]
ETC Seachanger 4 Channel [43]
Chauvet DJ Freedom Par Quad 4 ch [44]
Chauvet ColorDash Accent Quad 4ch [45]
Gantom 7 MEG1 [4]

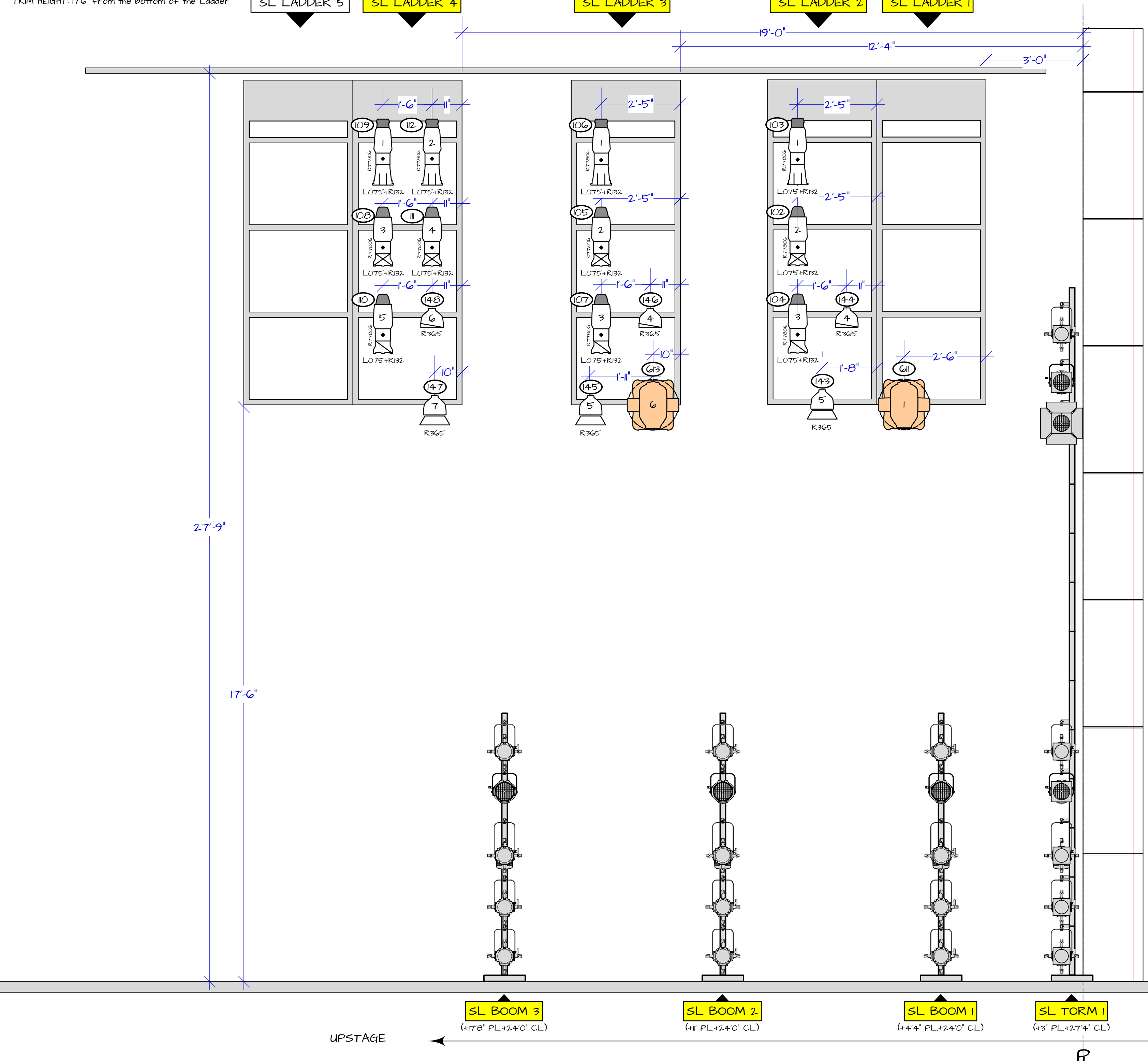
STAGE RIGHT LADDER

TRM HEIGHT: 27'-9" From the bottom of the L
TRM HEIGHT: 17'-6" From the bottom of the L



STAGE LEFT LADDERS

TRM HEIGHT: 27'-9" From the bottom of the Line Set
TRM HEIGHT: 17'-6" From the bottom of the Ladder



SYMBOL KEY

LIGHTING INSTRUMENTS

-
-
-
-
-
-
-
-
-
-
-
-
-
-
-
-
-
-
-
-
-
-
-

ACCESSORIES

-
-
-
-
-
-
-
-
-

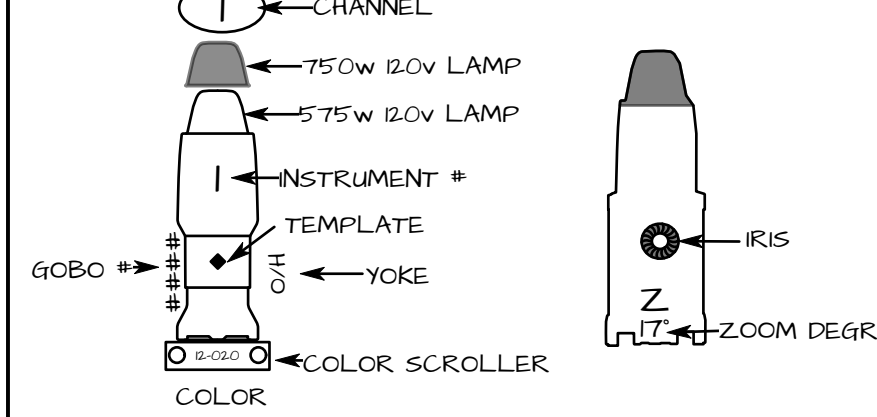
NOTES

- All Boom Positions use 8'-0" Schedule 40 1/2" Pipe
- All Torm Positions use 2'-0" Schedule 40 1/2" Pipe
- Torm Positions should be secured to Steel Grid. Discuss with designer if any questions.
- Please drop ALL Color, Gobos, and Accessories prior to Focus
- Fixture yoke indicated on specified fixtures.

Fixture Modes

- SoliFrame Theater: SoliFrame Theatre [4-7] + 10
- Martin TWL Internal Dimmer Extended [2-0] + 10
- VariLite 2500 Spot [3-3] + 10
- ETC Lueth Direct Strike [9]
- ETC Seachanger: 4 Channel [4]
- Chauvet DJ Freedom Par Quad 4-4ch [4]
- Chauvet ColorDisk Accent Quad 4ch [4]
- Gantom 7 MS07 [3]

LEGEND



THIS DRAWING REPRESENTS VISUAL CONCEPTS AND CONSTRUCTION. SUGGESTIONS ONLY. IT DOES NOT REPLACE THE KNOWLEDGE AND ADVICE OF A LICENSED STRUCTURAL ENGINEER. THE DESIGNERS ARE UNQUALIFIED TO DETERMINE THE STRUCTURAL APPROPRIATENESS OF THIS DESIGN AND WILL NOT ASSUME RESPONSIBILITY FOR ANY STRUCTURAL ENGINEERING OR USE.

MATTHEW J. WEISGABLE
LIGHTING DESIGN

Director: KATHERINE CARTER
Scene Design: PETER RULE
Assistant Lighting Designer: JAMES GALLO
Production Manager: MELANE HOLCOMB
Lighting Manager: SASHA PILEY
Assistant Lighting Manager: BRIDGET DOHERTY
EOS Programmer: BRIDGET DOHERTY

Carnegie Mellon University
School of Drama

PHILIP CHOSKY THEATRE
4900 Forbes Ave.
Pittsburgh, PA 15219

L'ENFANT ET LES SORTILÈGES
MUSIC BY MAURICE RAVEL
LIBRETTO BY SIDONIE-GABRIELLE COLLETTE

& CENDRILLON
BY PAULINE TERRES
DIRECTED BY KATHERINE CARTER
PHILIP CHOSKY THEATRE JANUARY 27th - JANUARY 30th, 2021

PRINT PAPER SIZE: ARCH E

REV	REVISION	DATE
△	FINAL	01/26/21
△	3rd Pass	1/19/21
△	2nd Pass	1/15/21
△	Rough Plot	10/26/20

SCALE: 1/2" = 1'-0"

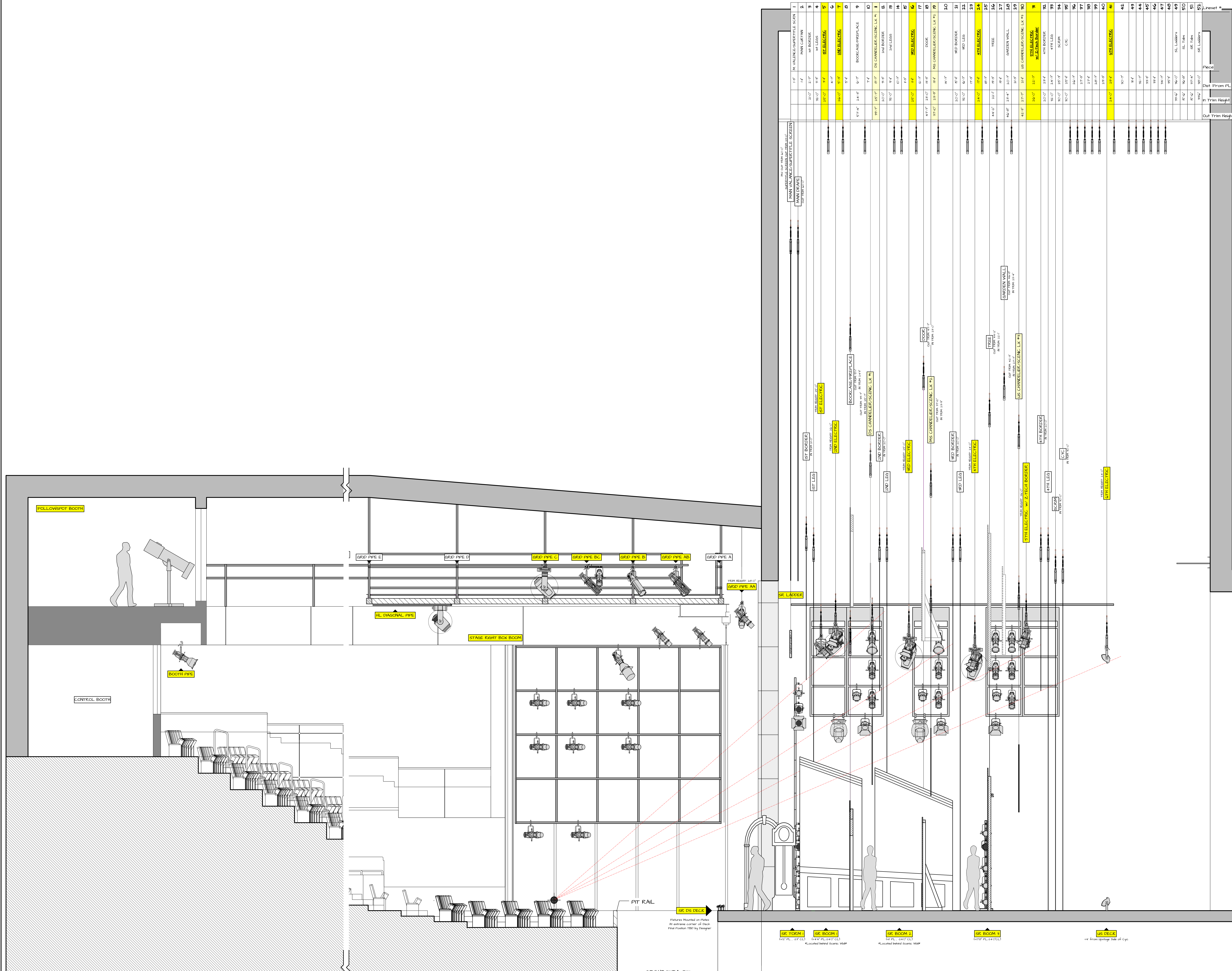
DRAWN BY: Matt J. Weisgable

CREATED: 10/26/20

FILE: L'Enfant/Cendrillon.vwx

PLATE 5 OF 7

BOX BOOMS / LADDERS



SYMBOL KEY

LIGHTING INSTRUMENTS

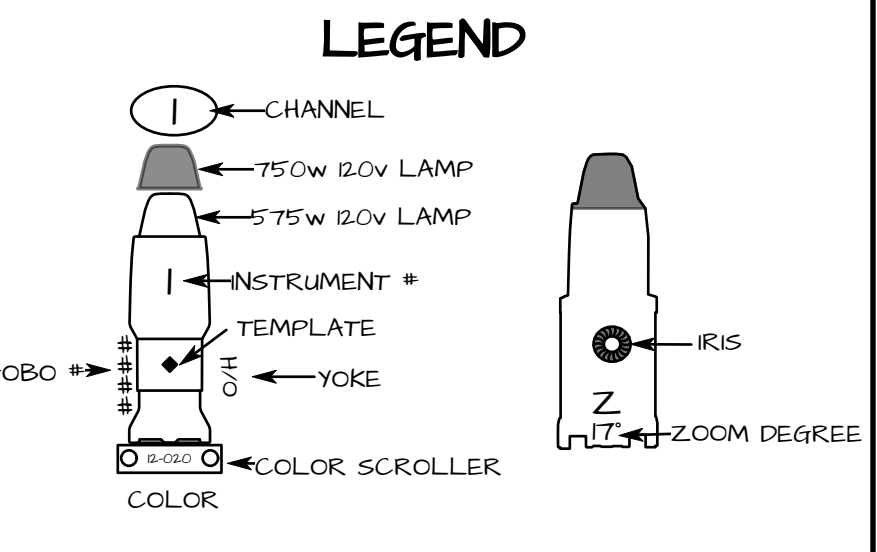
- ETC Source4 LED2DS 19'
- ETC Source4 LED2DS 24'
- ETC Source4 LED2DS 36'
- ETC Source4 15'-30' Zoom 750w
- ETC Source4 10' 750w
- ETC Source4 14' 750w
- ETC Source4 19' 750w
- ETC Source4 24' 750w
- ETC Source4 36' 750w
- ETC Source4 50' 750w
- ETC Source4 Seachanger 19' 750w
- ETC Source4 PAR NSP 575w
- ETC Source4 PAR MFL 575w
- ETC Source4 PAR WFL 575w
- PAR G4 MFL (STEEL CAN) kW
- PAR G4 WFL (STEEL CAN) kW
- LSE G Circuit Altman Cyc Light kW
- High End Soloframe Theater 500w
- Martin TW1 Narrow Lens 1239w
- Martin TW1 Medium Lens 1239w
- VariLite 2500 Spot 700w
- Super Trouper Short Throw Spot 12 kW

ACCESSORIES

- 75' Forerunner Scroller
- 14' Side Arm
- 625' Top Hat
- 75' Top Hat
- 10' Top Hat
- 75' 4 Leaf Barn Door

SFX

- MicroFogger 3 Lite
- *Crew Operated
- Rosco Delta 3000 Fogger w/ DMX
- MDG Hazer with Tank



THIS DRAWING REPRESENTS VISUAL CONCEPTS AND CONSTRUCTION SUGGESTIONS ONLY. IT DOES NOT REPLACE THE KNOWLEDGE AND ADVICE OF A LICENSED STRUCTURAL ENGINEER. THE DESIGNERS ARE UNWARRANTED TO DETERMINE THE STRUCTURAL APPROPRIATENESS OF THIS DESIGN AND WILL NOT ASSUME RESPONSIBILITY FOR ANY STRUCTURAL ENGINEERING OR USE.

MATTHEW J. WEISGABLE
LIGHTING DESIGN

Director: KATHERINE CARTER
 Scenic Design: PETER RULE
 Assistant Lighting Designer: JAMES GALLO
 Production Manager: MELANE HOLCOMB
 Assistant Lighting Manager: SASHA PILEY
 EOS Programmer: BRIDGET DOHERTY

Carnegie Mellon University
School of Drama

L'ENFANT ET LES SORTILÈGES
 MUSIC BY MAURICE RAVEL
 LIBRETTO BY SIDONIE-GABRIELLE COLLETTE

& CENDRILLON
 BY PIERRE MARQUET
 DIRECTED BY KATHERINE CARTER
 PHILIP CHOSKY THEATRE JANUARY 27th - JANUARY 30th, 2021

PRINT PAPER SIZE: **ARCH E**

REV	REVISION	DATE
FINAL	01/26/21	Drawing Index
1st Pass	1/19/21	1 - COMPOSITE GP
2nd Pass	1/25/21	2 - TENSION GRID GP
		3 - OVERHEAD GP
		4 - DECK GP
		5 - BOX BOOMS/LADDERS
		6 - SECTION
		7 - SCENE CONFIGURATION

SCALE: 3/8" = 1'-0"

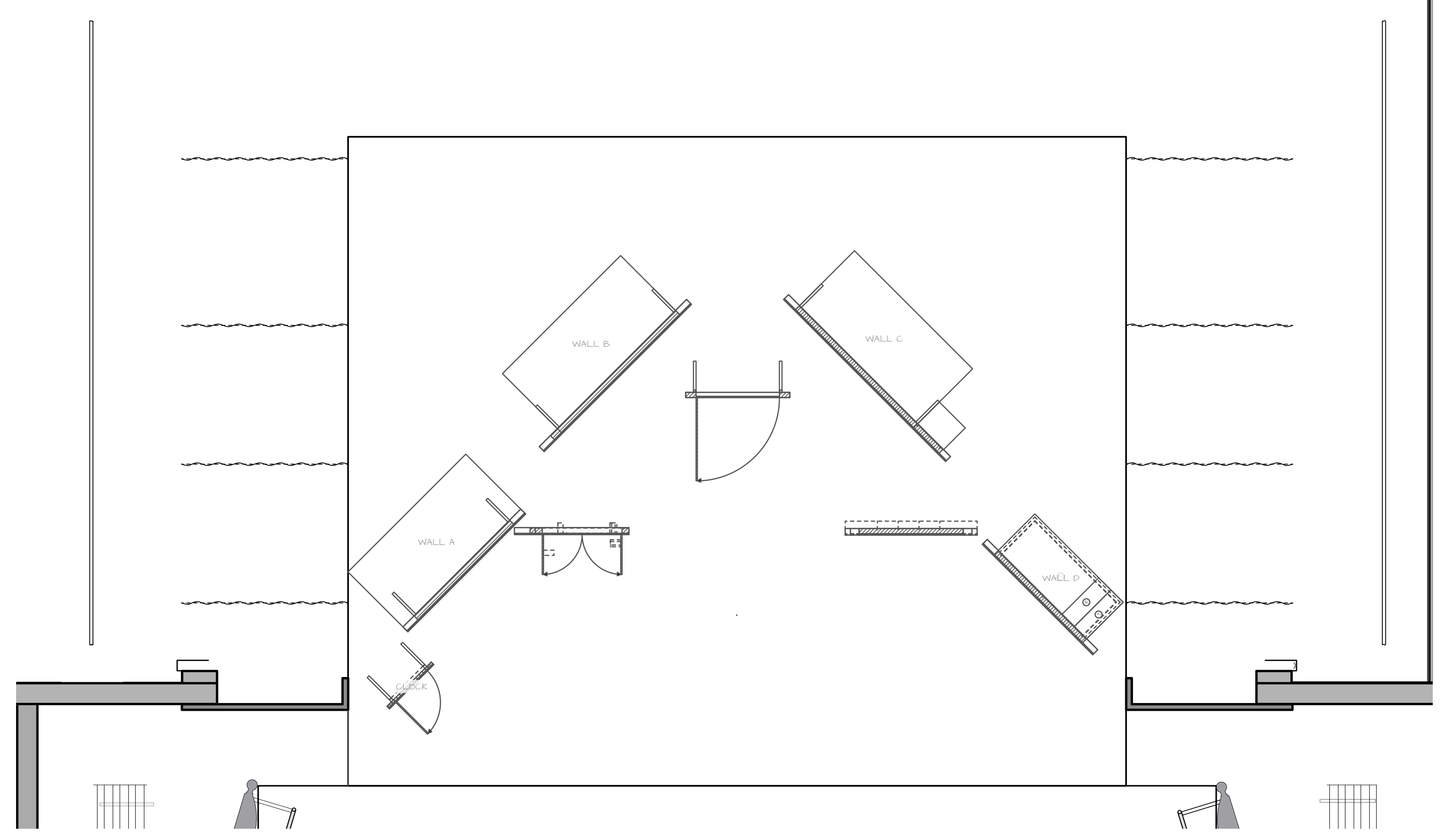
DRAWN BY: Matt J. Weisgable

CREATED: 10/26/21

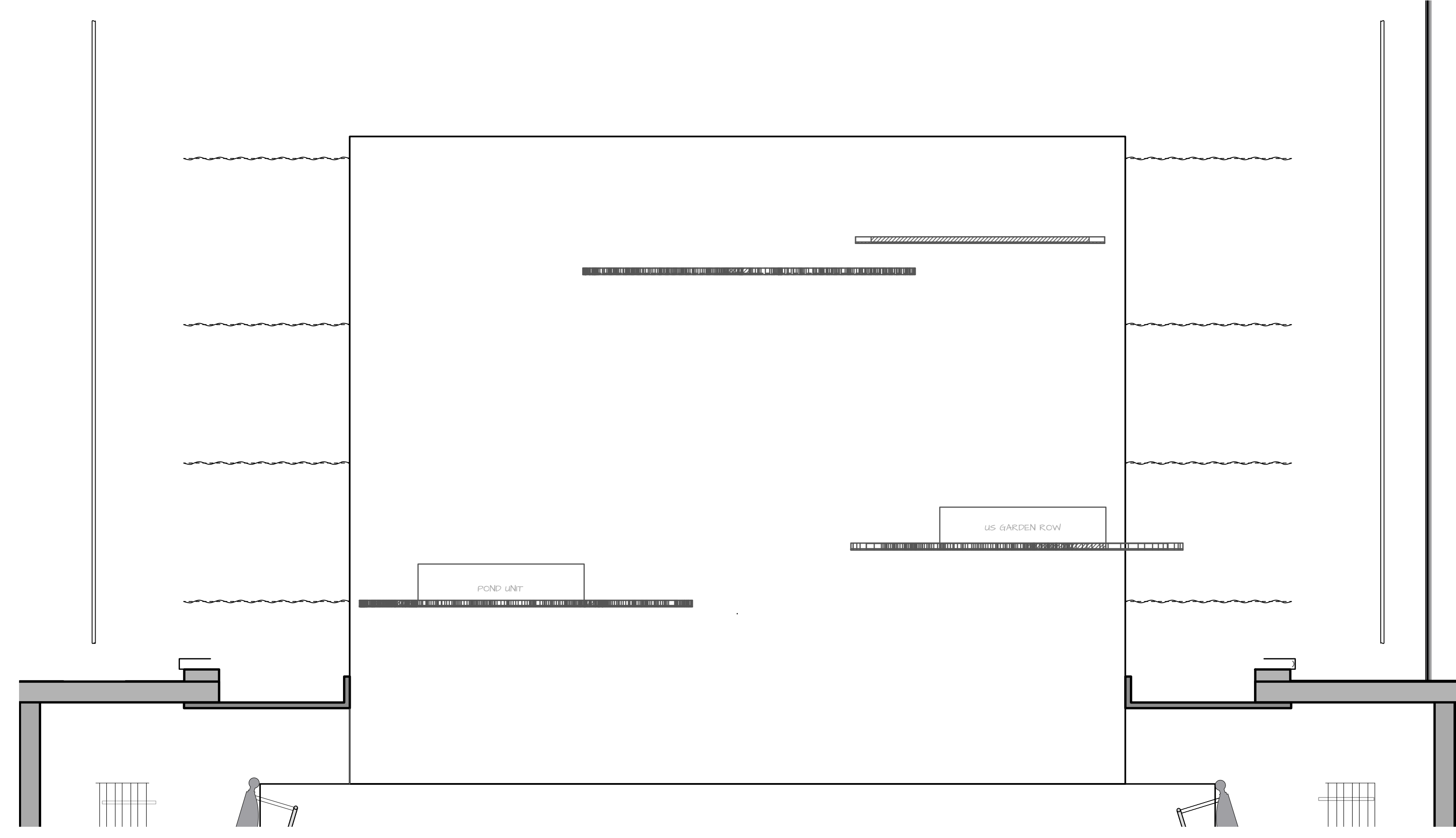
FILE: L'Enfant/Cendrillon.vwx

PLATE **6** OF 7

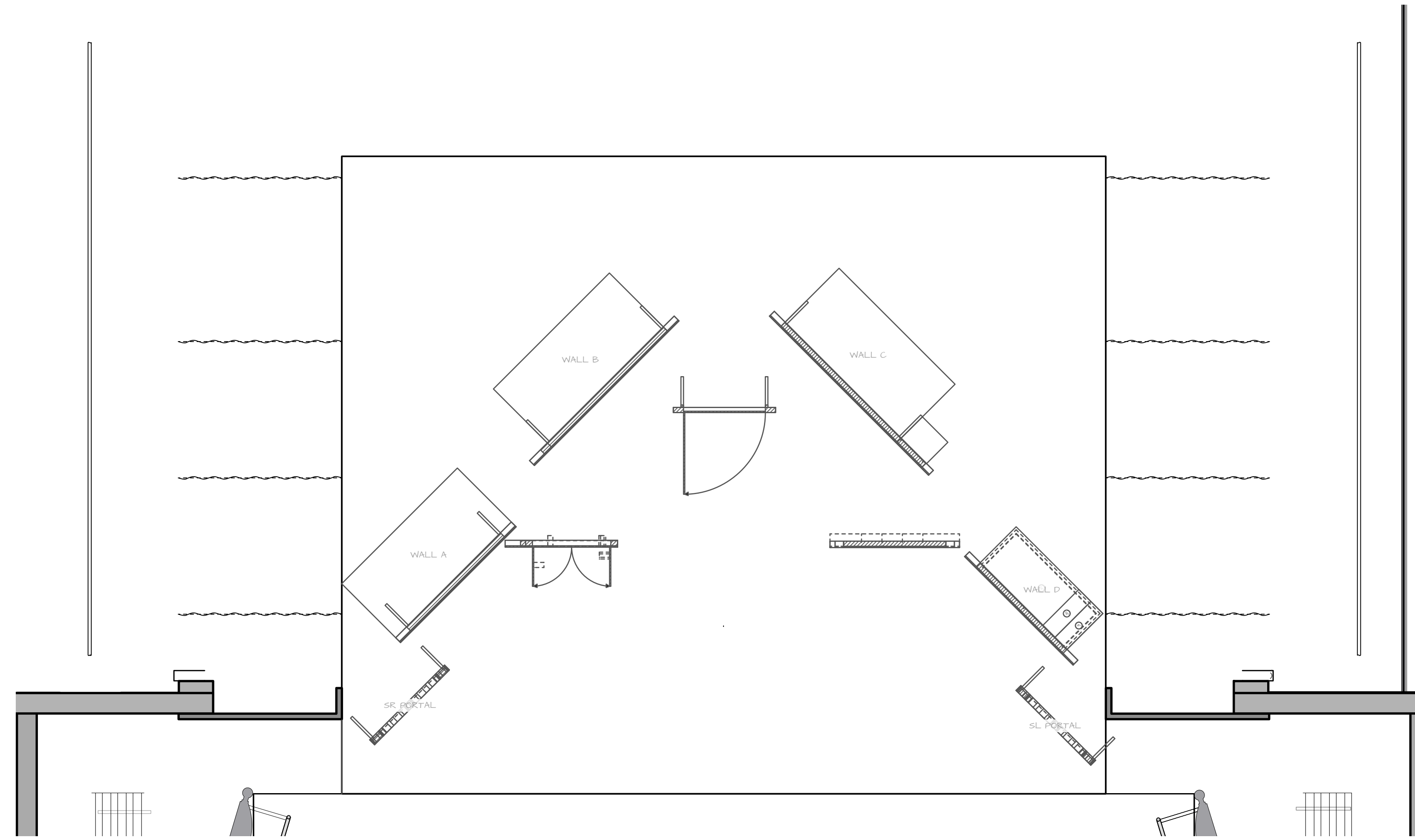
SECTION



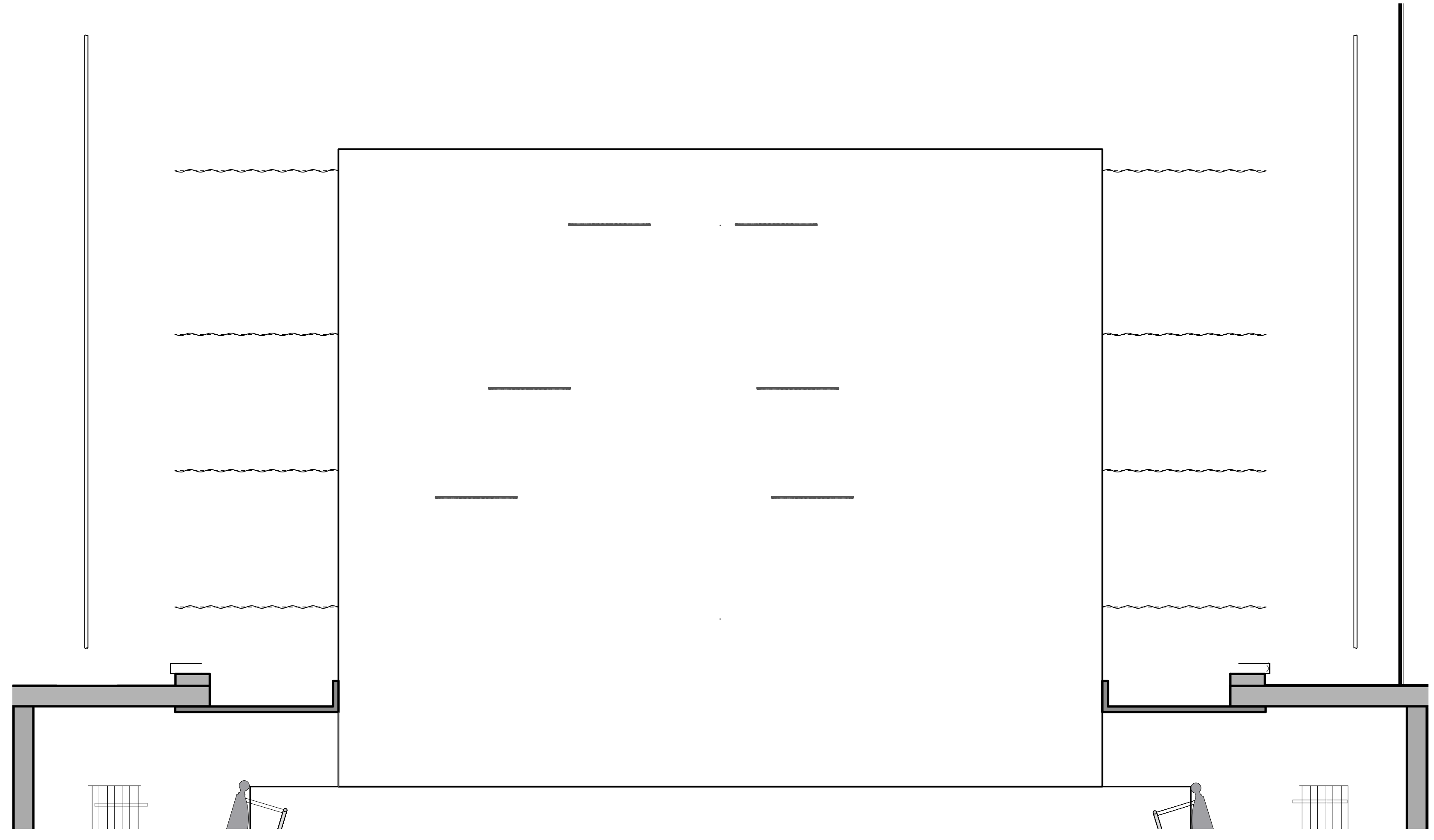
1 L'ENFANT ROOM CONFIGURATION
7 Scale 1/4" = 1'-0"



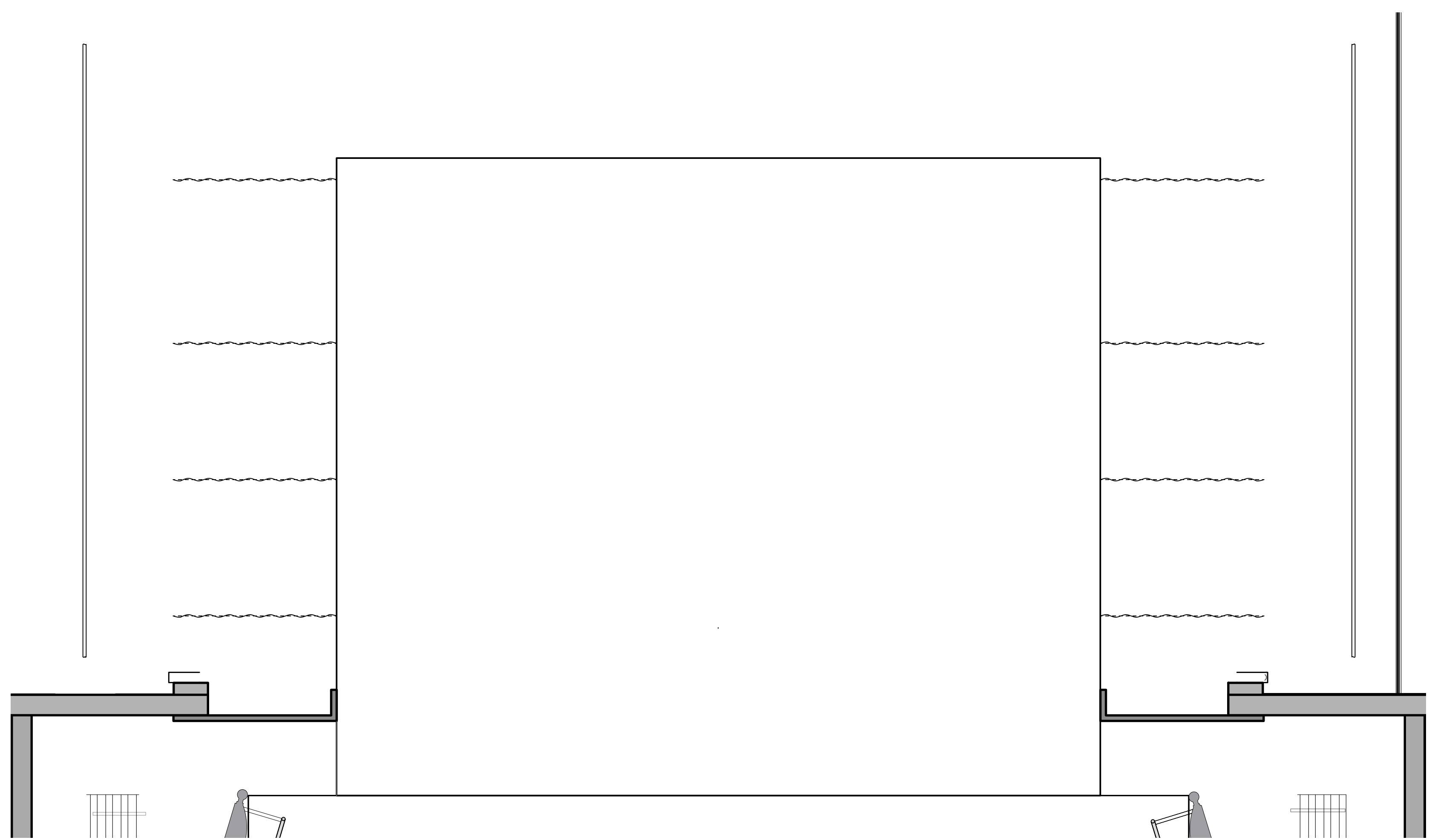
2 L'ENFANT GARDEN CONFIGURATION
7 Scale 1/4" = 1'-0"



3 CENDRILLON ROOM CONFIGURATION
7 Scale 1/4" = 1'-0"



4 CENDRILLON BALLROOM CONFIGURATION
7 Scale 1/4" = 1'-0"



5 GENN STAGE
7 Scale 1/4" = 1'-0"

SYMBOL KEY

LIGHTING INSTRUMENTS

- ETC Source4 LED2DS 19'
- ETC Source4 LED2DS 24'
- ETC Source4 LED2DS 36'
- ETC Source4 15'-30' Zoom 750w
- ETC Source4 10' 750w
- ETC Source4 14' 750w
- ETC Source4 19' 750w
- ETC Source4 24' 750w
- ETC Source4 36' 750w
- ETC Source4 50' 750w
- ETC Source4 Seachanger 19' 750w
- ETC Source4 PAR NSP 1575w
- ETC Source4 PAR MFL 1575w
- ETC Source4 PAR WFL 1575w
- PAR G4 MFL (STEEL CAN) 1kW
- PAR G4 WFL (STEEL CAN) 1kW
- LSE G Circuit Altman Cyc Light 1kW
- High End SolafFrame Theater 500w
- Martin TW1 Narrow Lens 1239w
- Martin TW1 Medium Lens 1239w
- VariLite 2500 Spot 700w
- Super Trouper Short Throw Spot 12 kW
- Practical Chauvet ColorDash Accent DMX Spot
- Gantom Chauvet DJ Freedom Par

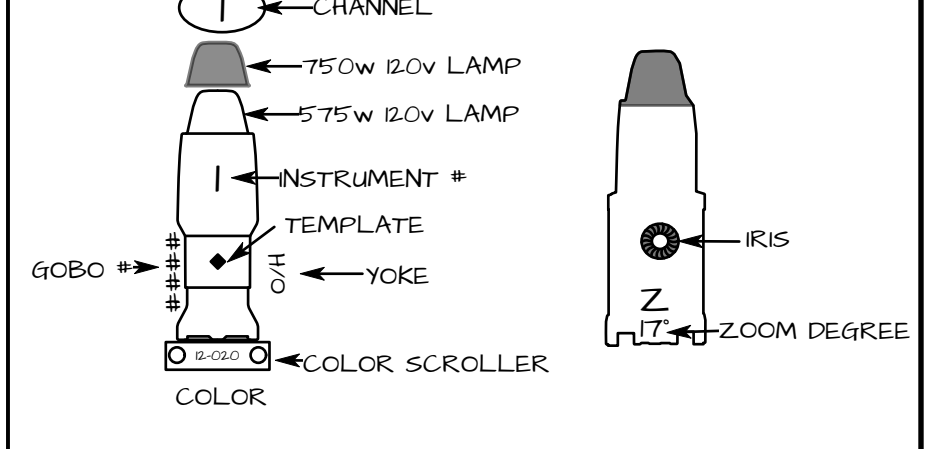
ACCESSORIES

- 75' Forerunner Scroller
- 14' Side Arm
- 625' Top Hat
- 75' Top Hat
- 10' Top Hat
- 75' 4 Leaf Barn Door

SFX

- MicroFogger 3 Lite 4Crew Operated
- Rosco Delta 3000 Fogger w/ DMX
- MDG Hazer with Tank

LEGEND



THIS DRAWING REPRESENTS VISUAL CONCEPTS AND CONSTRUCTION SUGGESTIONS ONLY. IT DOES NOT REPLACE THE KNOWLEDGE AND ADVICE OF A LICENSED STRUCTURAL ENGINEER. THE DESIGNERS ARE UNWILLING TO DETERMINE THE STRUCTURAL APPROPRIATENESS OF THIS DESIGN AND WILL NOT ASSUME RESPONSIBILITY FOR ANY STRUCTURAL ENGINEERING OR USE.

MATTHEW J. WEISGABLE
LIGHTING DESIGN
MJW
LIGHTING DESIGN
Matthew J. Weisgable
632 Barton Street
Pittsburgh, PA 15217
E: mweisg@att.net
P: 412-341-3909

Director: KATHERINE CARTER
Scenic Design: PETER RULE
Assistant Lighting Designer: JAMES GALLO
Lighting Manager: MELANE HOLCOMB
Assistant Lighting Manager: SASHA PILEY
EOS Programmer: BRIDGET DOHERTY

Carnegie Mellon University
School of Drama
PHILIP CHOSKY THEATRE
4900 Forbes Ave.
Pittsburgh, PA 15219
L'ENFANT ET LES SORTILÈGES
MUSIC BY MAURICE RAVEL
LIBRETTO BY SIDONIE-GABRIELLE COLLETTE
&
CENDRILLON
BY PAULINE FERRON
DIRECTED BY KATHERINE CARTER
PHILIP CHOSKY THEATRE JANUARY 27th - JANUARY 30th, 2021

PRINT PAPER SIZE: **ARCH E**

REV	REVISION	DATE	Drawing Index
△	FINAL	01/26/21	1 - COMPOSITE GP
△	3rd Pass	1/19/21	2 - TENSION GRID GP
△	2nd Pass	1/15/21	3 - OVERHEAD GP
△	Rough Plot	10/26/20	4 - DECK GP
			5 - BOX BOOMS/LADDERS
			6 - SECTION
			7 - SCENE CONFIGURATION

SCALE: 1/2" = 1'-0"
DRAWN BY: Matt J. Weisgable
CREATED: 10/26/20
FILE: L'Enfant/Cendrillon.vwx

PLATE
7
OF 7

SCENIC CONFIGURATION