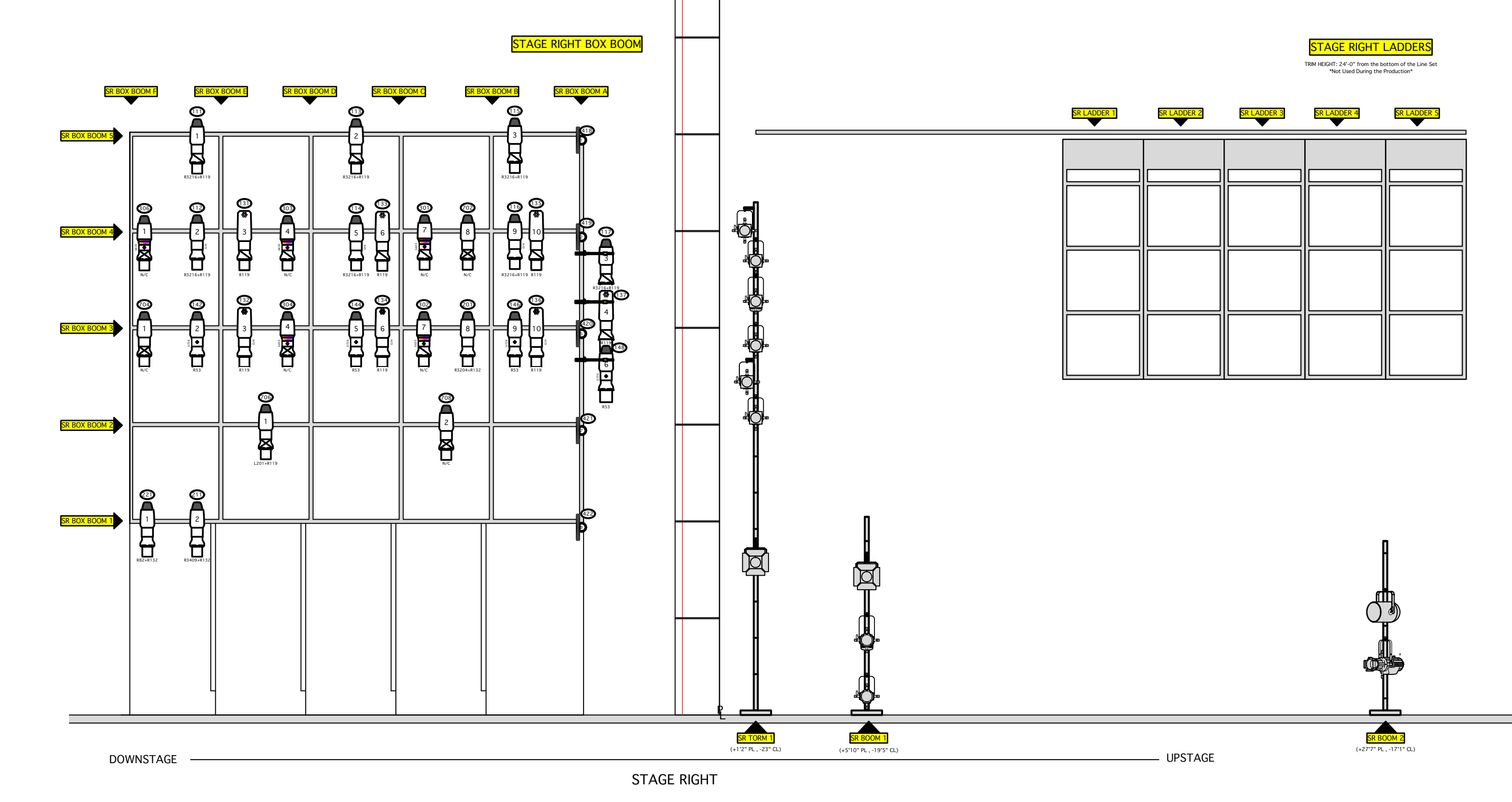
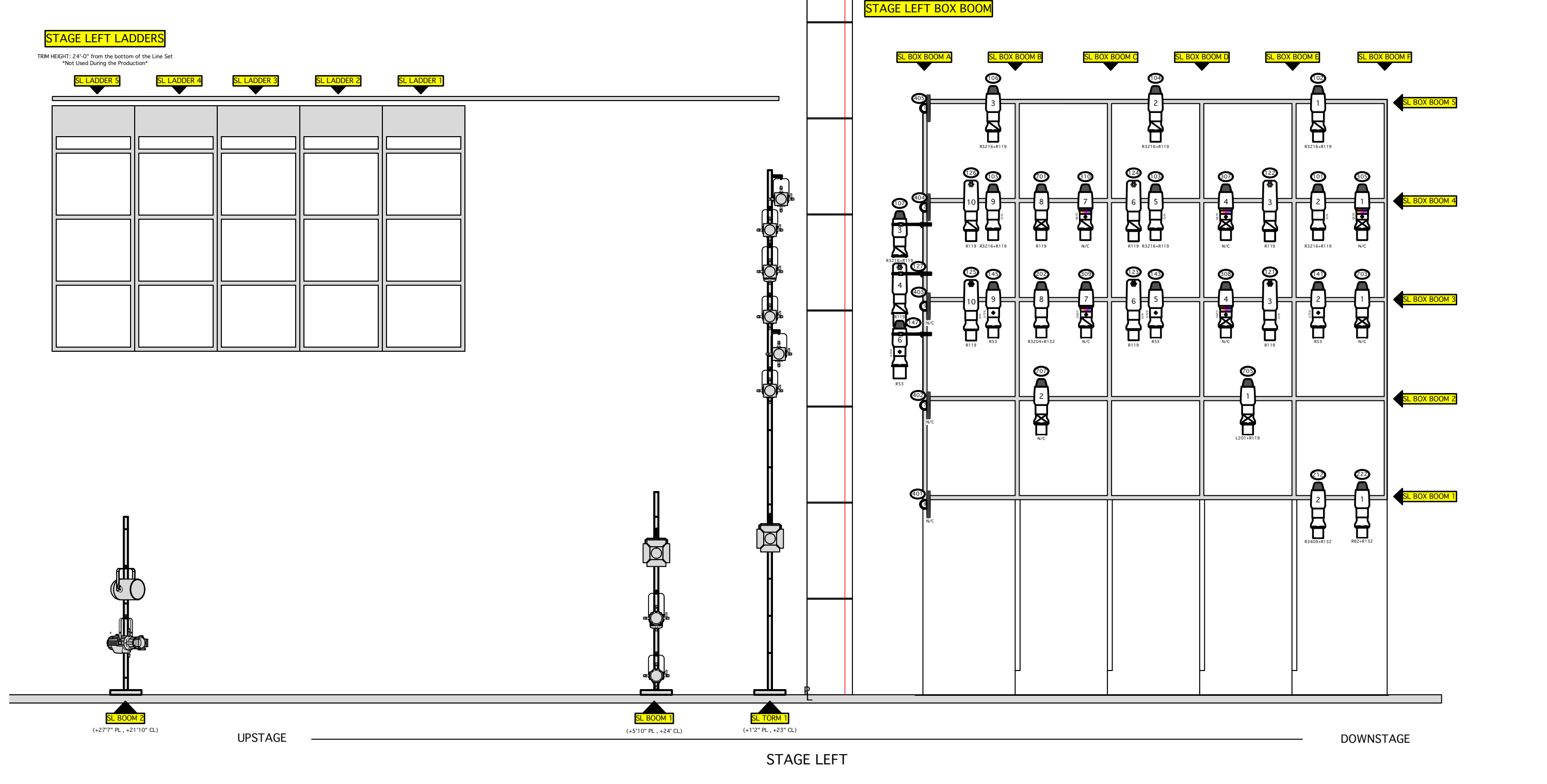


Item	Quantity	Height	Width	Depth	Notes
SR Ladders	30'-0"	15'-6"	15'-6"		
SR Table	37'-4"	15'-6"	15'-6"		
SR Table	36'-8"	15'-6"	15'-6"		
SR Ladders	36'-0"	15'-6"	15'-6"		
	33'-0"				
	33'-11"				
	33'-0"				
4th ELECTRIC	32'-7"	3'-6"	3'-6"		
5th BOARDS	28'-11"	12'-0"	12'-0"		
6th BOARDS	28'-11"	12'-0"	12'-0"		
7th BOARDS	28'-11"	12'-0"	12'-0"		
PULL STAGE BLACK SCRM	28'-7"	28'-0"	31'-3"		
	27'-11"				
	27'-3"				
	26'-0"				
8th MEDIA	23'-11"	12'-0"	12'-0"		
	23'-11"				
	23'-11"				
9th 2nd BOARDS	14'-7"	37'-0"	37'-0"		
	13'-11"				
10th 2nd BOARDS	13'-11"	37'-0"	37'-0"		
	12'-7"				
	12'-7"				
	12'-7"				
	12'-7"				
	12'-7"				
11th 1st BOARDS	8'-0"	23'-0"	23'-0"		
	8'-0"				
	8'-0"				
12th WINDOW	7'-11"	20'-0"	20'-0"		
	6'-0"				
13th 1st ELECTRIC	5'-11"	20'-0"	20'-0"		
	5'-0"				
	4'-0"				
14th 1st LEDS	3'-11"	30'-0"	30'-0"		
	3'-0"				
15th PULL STAGE BLACK	2'-0"	50'-5"	48'-5"		
16th MAIN CURTAIN	1'-11"	33'-0"	33'-0"		
17th MAIN WALLACE	1'-0"	30'-0"	30'-0"		



- ### SYMBOL KEY
- #### LIGHTING INSTRUMENTS
- ETC Source4 LED2DS 19"
 - ETC Source4 LED2DS 26"
 - ETC Source4 LED2DS 36"
 - Seachanger ETC Source4 19' 750w
 - Seachanger ETC Source4 26' 750w
 - ETC Source4 15'-30' Zoom 750w
 - ETC Source4 10' 750w
 - ETC Source4 19' 750w
 - ETC Source4 26' 750w
 - ETC Source4 36' 750w
 - ETC Source4 50' 750w
 - ETC Source4 PAR NSP
 - ETC Source4 PAR WFL 750w
 - ETC Source4 PAR EXWFL 750w
 - Altman PAR64 VNSP 750w Steel Can
 - Altman PAR64 WFL 750w Aluminum Can
 - Altman PAR64 WFL 750w Steel Can

- L&E Circuit Altman Cyc Light
 - Altman Q-Lite Jr
 - ColorBlast 12 Narrow
 - Practical (LED High Bay Fixture)
 - Practical
 - Martin Mac TW1
 - High End Solaframe Theater
- #### ACCESSORIES
- 6.25" Top Hat
 - 7.5" Top Hat
 - 10" Short Top Hat
 - 10" 4 Leaf Barn Door
 - 7.5" 4 Leaf Barn Door
 - 14" Side Arm
- #### SFX
- Base Hazer
 - MDG Hazer with Tank
- #### LEGEND
- CHANNEL
 - 750w 120v LAMP
 - 575w 120v LAMP
 - INSTRUMENT
 - STATIC A SIZE TEMPLATE
 - COLOR SCROLLER
 - ZOOM DEGREE

THIS DRAWING REPRESENTS VISUAL CONCEPTS AND CONSTRUCTION SUGGESTIONS ONLY. IT DOES NOT REPLACE THE KNOWLEDGE AND ADVICE OF A LICENSED STRUCTURAL ENGINEER. THE DESIGNERS ARE UNLAWFUL TO OBTAINING THE STRUCTURAL APPROPRIATENESS OF THIS DESIGN AND WILL NOT ASSUME RESPONSIBILITY FOR IMPROPER ENGINEERING OR USE.

POWER/TRIP
 WRITTEN & DIRECTED BY ANNE DEMELO
 PHILIP CHOSKY THEATRE
 OCT 10TH - 12TH 2021

- Director.....ANNE DEMELO
- Scenic Design.....EVAN FRANK
- Costume Design.....LILY CUNICELLI
- Production Manager.....SARAH BAUCH
- Lighting Manager.....THOMAS FEATHER
- Assistant Lighting Manager.....ALEXA JANOSCHKA
- EOS Programmer.....JAMES GALLO

Carnegie Mellon University
 School of Drama

PHILIP CHOSKY THEATRE
 4908 Forbes Ave,
 Pittsburgh, PA, 15213

MATTHEW J. WEISGABLE
 LIGHTING DESIGN

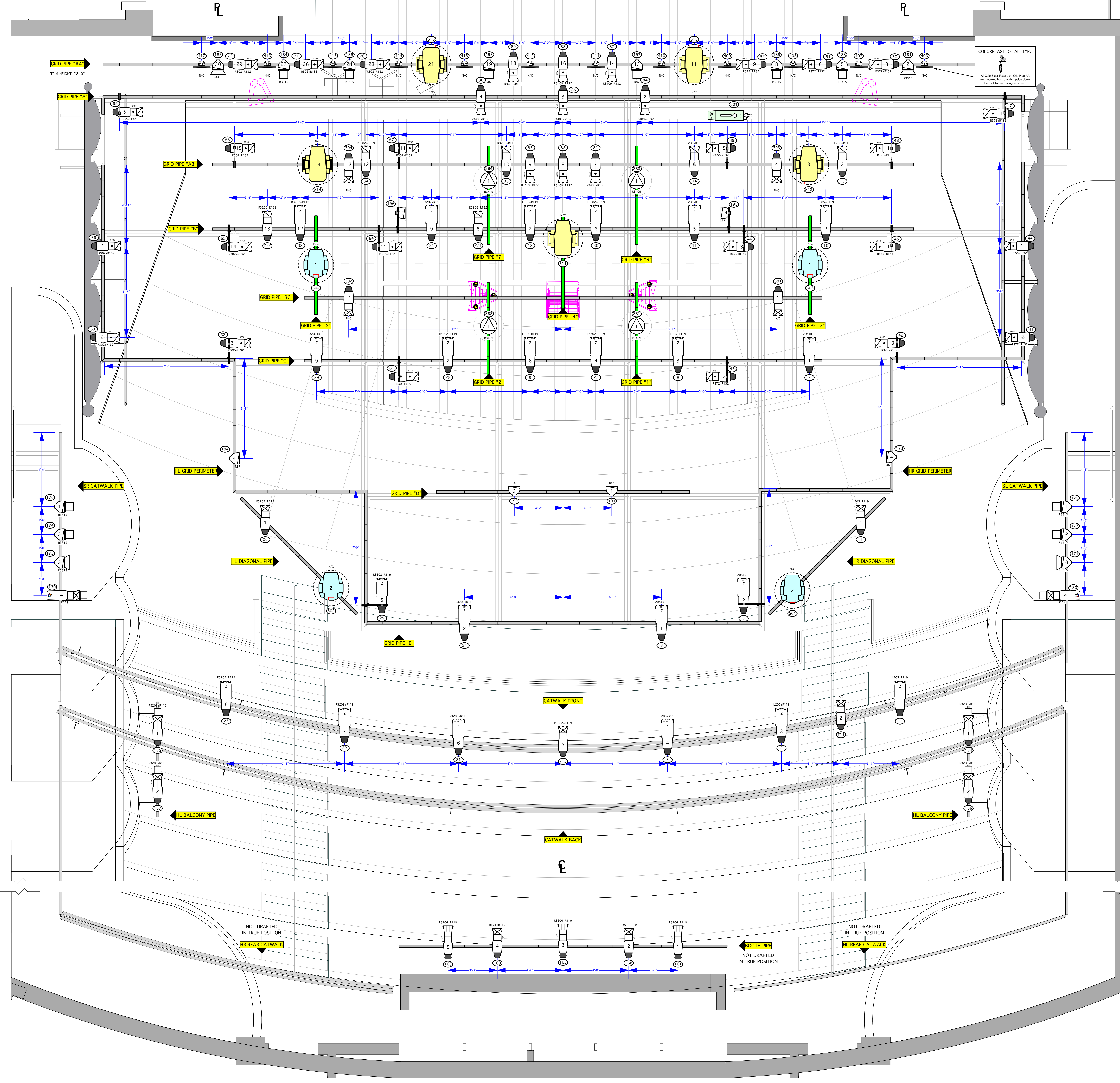
MJW
 LIGHTING DESIGN

PRINT PAPER SIZE: ARCH E

REV	REVISION	DATE
FINAL		09/14/21
3rd Pass		09/11/21
2nd Pass		09/9/21
Rough Plot		09/7/21

REV	REVISION	DATE	DESCRIPTION
1		09/14/21	Drawing Index
2			1 - COMPOSITE GP
3			2 - TENSION GRID GP
4			3 - OVERHEAD GP
5			4 - DECK GP
6			5 - BOX BOOMS/LADDERS
			6 - SECTION

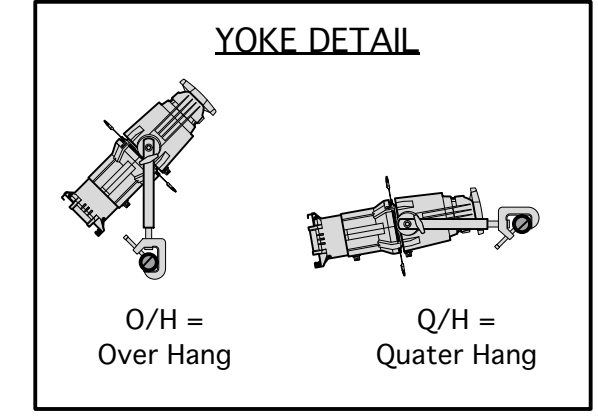
SCALE: 1/4" = 1'-0" PLATE 1 OF 6
 DRAWN BY: Matthew J. Weisgable
 CREATED: 08/30/21
 FILE: MJW-Power/Trip.vwx



SYMBOL KEY

LIGHTING INSTRUMENTS

- ETC Source4 LED2DS 19"
- ETC Source4 LED2DS 26"
- ETC Source4 LED2DS 36"
- Seachanger ETC Source4 19' 750w
- Seachanger ETC Source4 26' 750w
- ETC Source4 15'-30' Zoom 750w
- ETC Source4 10' 750w
- ETC Source4 19' 750w
- ETC Source4 26' 750w
- ETC Source4 36' 750w
- ETC Source4 50' 750w
- ETC Source4 PAR NSP
- ETC Source4 PAR WFL 750w
- ETC Source4 PAR EXWFL 750w
- Altman PAR64 VNSP 750w Steel Can
- Altman PAR64 WFL 750w Aluminum Can
- Altman PAR64 WFL 750w Steel Can



Fixture Modes
 SoloFrame Theatre: SoloFrame Theatre [47] + 3D
 Martin TW1: Internal Dimmer Extended [20] + 3D
 ETC Lustr: Direct Strobe [9]
 ETC Seachanger: 4 Channel [4]
 Color Kinetics Colorblast: [3]



- NOTES**
1. HL and HR Diagonal Pipe should be mounted to the existing tension grid structure.
 2. Fixture yokes indicated on specified fixtures.
 3. MDG Hazer is positioned directly on the Tension Grid. Please secure safely and properly.
 4. Refer to practical detail drawing.
 5. Refer to colorblast detail for proper hanging position of fixtures.
 6. Please Drop All Accessories, Gobos, and Color prior to focus.

- L&E 6 Circuit Altman Cyc Light
- Altman Q-Lite Jr
- ColorBlast 12 Narrow
- Practical (LED High Bay Fixture)
- Practical
- Martin Mac TW1
- High End SoloFrame Theater

ACCESSORIES

- 6.25" Top Hat
- 7.5" Top Hat
- 10" Short Top Hat
- 10" 4 Leaf Barn Door
- 14" Side Arm
- 7.5" 4 Leaf Barn Door

SFX

- Base Hazer
- MDG Hazer with Tank

LEGEND

- 1-CHANNEL
- 750w 120v LAMP
- 575w 120v LAMP
- INSTRUMENT #
- STATIC A SIZE TEMPLATE
- COLOR SCROLLER
- ZOOM DEGREE

THIS DRAWING REPRESENTS VISUAL CONCEPTS AND CONSTRUCTION SUGGESTIONS ONLY. IT DOES NOT REPLACE THE KNOWLEDGE AND JUDGEMENT OF A LICENSED STRUCTURAL ENGINEER. THE DESIGNERS ARE UNQUALIFIED TO DETERMINE THE STRUCTURAL APPROPRIATENESS OF THIS DESIGN AND WILL NOT ASSUME RESPONSIBILITY FOR IMPROPER ENGINEERING OR USE.

POWER/TRIP
 WRITTEN & DIRECTED BY ANNE DEMELO
 PHILIP CHOSKY THEATRE
 OCT 10TH - 12TH 2021

Director.....ANNE DEMELO
 Scenic Design.....EVAN FRANK
 Costume Design.....LILY CUNICELLI
 Production Manager.....SARAH BAUCH
 Lighting Manager.....THOMAS FEATHER
 Assistant Lighting Manager.....ALEXA JANOSCHKA
 EOS Programmer.....JAMES GALLO

Carnegie Mellon University
 School of Drama
 PHILIP CHOSKY THEATRE
 4908 Forbes Ave,
 Pittsburgh, PA, 15213

MATTHEW J. WEISGABLE
 LIGHTING DESIGN
MJW
 LIGHTING DESIGN

PRINT PAPER SIZE: **ARCH E**

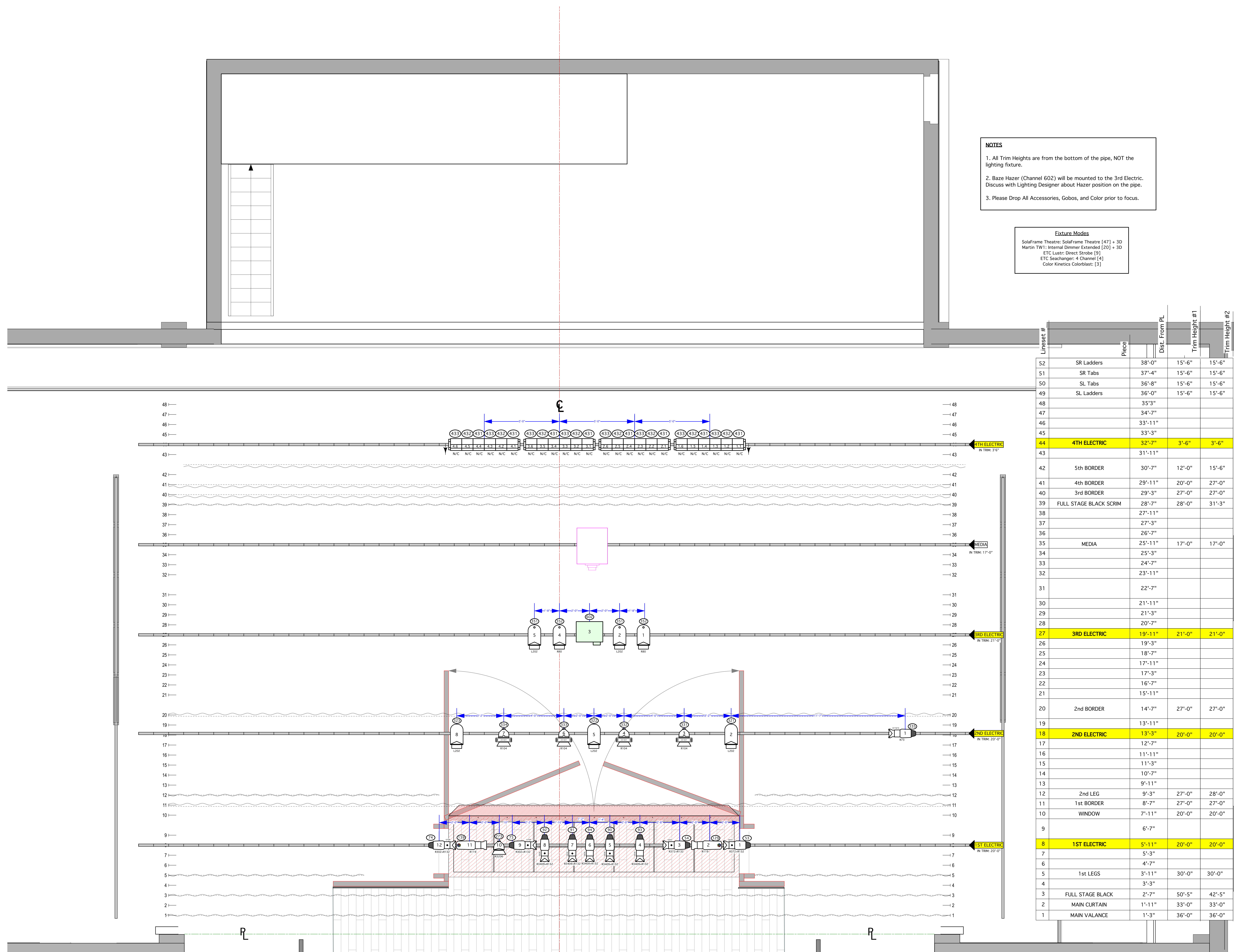
REV	REVISION	DATE
FINAL		09/14/21
3rd Pass		09/11/21
2nd Pass		09/9/21
Rough Plot		09/7/21

REV	REVISION	DATE
1	COMPOSITE GP	
2	TENSION GRID GP	
3	OVERHEAD GP	
4	SECC GP	
5	BOX BOOMS/LADDERS	
6	SECTION	

SCALE: 1/2" = 1'-0"
 DRAWN BY: Matthew J. Weisgable
 CREATED: 08/30/21
 FILE: MJW-Power/Trip.vwx

PLATE
2
 OF 6

TENSION GRID GROUNDPLAN



NOTES

1. All Trim Heights are from the bottom of the pipe, NOT the lighting fixture.
2. Baze Hazer (Channel 602) will be mounted to the 3rd Electric. Discuss with Lighting Designer about Hazer position on the pipe.
3. Please Drop All Accessories, Gobos, and Color prior to focus.

Fixture Modes
 SoloFrame Theatre: SoloFrame Theatre [47] + 3D
 Martin TW1: Internal Dimmer Extended [20] + 3D
 ETC Lustr: Direct Strobe [9]
 ETC Seachanger: 4 Channel [4]
 Color Kinetics Colorblast: [3]

Lineset #	Piece	Dist. From PL	Trim Height #1	Trim Height #2
52	SR Ladders	38'-0"	15'-6"	15'-6"
51	SR Tabs	37'-4"	15'-6"	15'-6"
50	SL Tabs	36'-8"	15'-6"	15'-6"
49	SL Ladders	36'-0"	15'-6"	15'-6"
48		35'-3"		
47		34'-7"		
46		33'-11"		
45		33'-3"		
44	4TH ELECTRIC	32'-7"	3'-6"	3'-6"
43		31'-11"		
42	5th BORDER	30'-7"	12'-0"	15'-6"
41	4th BORDER	29'-11"	20'-0"	27'-0"
40	3rd BORDER	29'-3"	27'-0"	27'-0"
39	FULL STAGE BLACK SCRIM	28'-7"	28'-0"	31'-3"
38		27'-11"		
37		27'-3"		
36		26'-7"		
35	MEDIA	25'-11"	17'-0"	17'-0"
34		25'-3"		
33		24'-7"		
32		23'-11"		
31		22'-7"		
30		21'-11"		
29		21'-3"		
28		20'-7"		
27	3RD ELECTRIC	19'-11"	21'-0"	21'-0"
26		19'-3"		
25		18'-7"		
24		17'-11"		
23		17'-3"		
22		16'-7"		
21		15'-11"		
20	2nd BORDER	14'-7"	27'-0"	27'-0"
19		13'-11"		
18	2ND ELECTRIC	13'-3"	20'-0"	20'-0"
17		12'-7"		
16		11'-11"		
15		11'-3"		
14		10'-7"		
13		9'-11"		
12	2nd LEG	9'-3"	27'-0"	28'-0"
11	1st BORDER	8'-7"	27'-0"	27'-0"
10	WINDOW	7'-11"	20'-0"	20'-0"
9		6'-7"		
8	1ST ELECTRIC	5'-11"	20'-0"	20'-0"
7		5'-3"		
6		4'-7"		
5	1st LEGS	3'-11"	30'-0"	30'-0"
4		3'-3"		
3	FULL STAGE BLACK	2'-7"	50'-5"	42'-5"
2	MAIN CURTAIN	1'-11"	33'-0"	33'-0"
1	MAIN VALANCE	1'-3"	36'-0"	36'-0"

SYMBOL KEY

LIGHTING INSTRUMENTS

- ETC Source4 LED2DS 19"
- ETC Source4 LED2DS 26"
- ETC Source4 LED2DS 36"
- Seachanger ETC Source4 19' 750w
- Seachanger ETC Source4 26' 750w
- ETC Source4 15'-30' Zoom 750w
- ETC Source4 10' 750w
- ETC Source4 19' 750w
- ETC Source4 26' 750w
- ETC Source4 36' 750w
- ETC Source4 50' 750w
- ETC Source4 PAR NSP
- ETC Source4 PAR WFL 750w
- ETC Source4 PAR EXWFL 750w
- Altman PAR64 VN5P 750w Steel Can
- Altman PAR64 WFL 750w Aluminum Can
- Altman PAR64 WFL 750w Steel Can
- L&E 6 Circuit Altman Cyc Light
- Altman Q-Lite Jr
- ColorBlast 12 Narrow
- Practical (LED High Bay Fixture)
- Practical
- Martin Mac TW1
- High End SoloFrame Theater

ACCESSORIES

- 6.25" Top Hat
- 7.5" Top Hat
- 7.5" ColorRam II Scroller
- 10" Short Top Hat
- 10" 4 Leaf Barn Door
- 14" Side Arm
- 7.5" 4 Leaf Barn Door

SFX

- Base Hazer
- MDG Hazer with Tank

LEGEND

- 1 - CHANNEL
- 2 - 750w 120v LAMP
- 3 - INSTRUMENT
- 4 - GOBO #
- 5 - STATIC A SIZE TEMPLATE
- 6 - COLOR
- 7 - COLOR SCROLLER
- 8 - ZOOM DEGREE

THIS DRAWING REPRESENTS VISUAL CONCEPTS AND CONSTRUCTION SUGGESTIONS ONLY. IT DOES NOT REPLACE THE KNOWLEDGE AND ADVICE OF A LICENSED STRUCTURAL ENGINEER. THE DESIGNERS ARE UNLICENCED AND WILL NOT ASSUME RESPONSIBILITY FOR IMPROPER ENGINEERING OR USE.

POWER/TRIP
 WRITTEN & DIRECTED BY ANNE DEMELO
 PHILIP CHOSKY THEATRE
 OCT 10TH - 12TH 2021

Director.....ANNE DEMELO
 Scenic Design.....EVAN FRANK
 Costume Design.....LILY CUNICELLI
 Production Manager.....SARAH BAUCH
 Lighting Manager.....THOMAS FEATHER
 Assistant Lighting Manager.....ALEXA JANOSCHKA
 EOS Programmer.....JAMES GALLO

Carnegie Mellon University
 School of Drama

PHILIP CHOSKY THEATRE
 4908 Forbes Ave,
 Pittsburgh, PA, 15213

MATTHEW J. WEISGABLE
 LIGHTING DESIGN

MJW
 LIGHTING DESIGN

Matthew J. Weisgable
 422 Bayview Street
 Pittsburgh, PA 15207
 P: 412-681-2111
 F: 412-681-8505

PRINT PAPER SIZE: **ARCH E**

REV	REVISION	DATE
FINAL		09/14/21
3rd Pass		09/11/21
2nd Pass		09/9/21
Rough Plot		09/7/21

Drawing Index

- 1 - COMPOSITE GP
- 2 - TENSION GRID GP
- 3 - OVERHEAD GP
- 4 - DECK GP
- 5 - BOX BOOMS/LADDERS
- 6 - SECTION

SCALE: 1/2" = 1'-0"

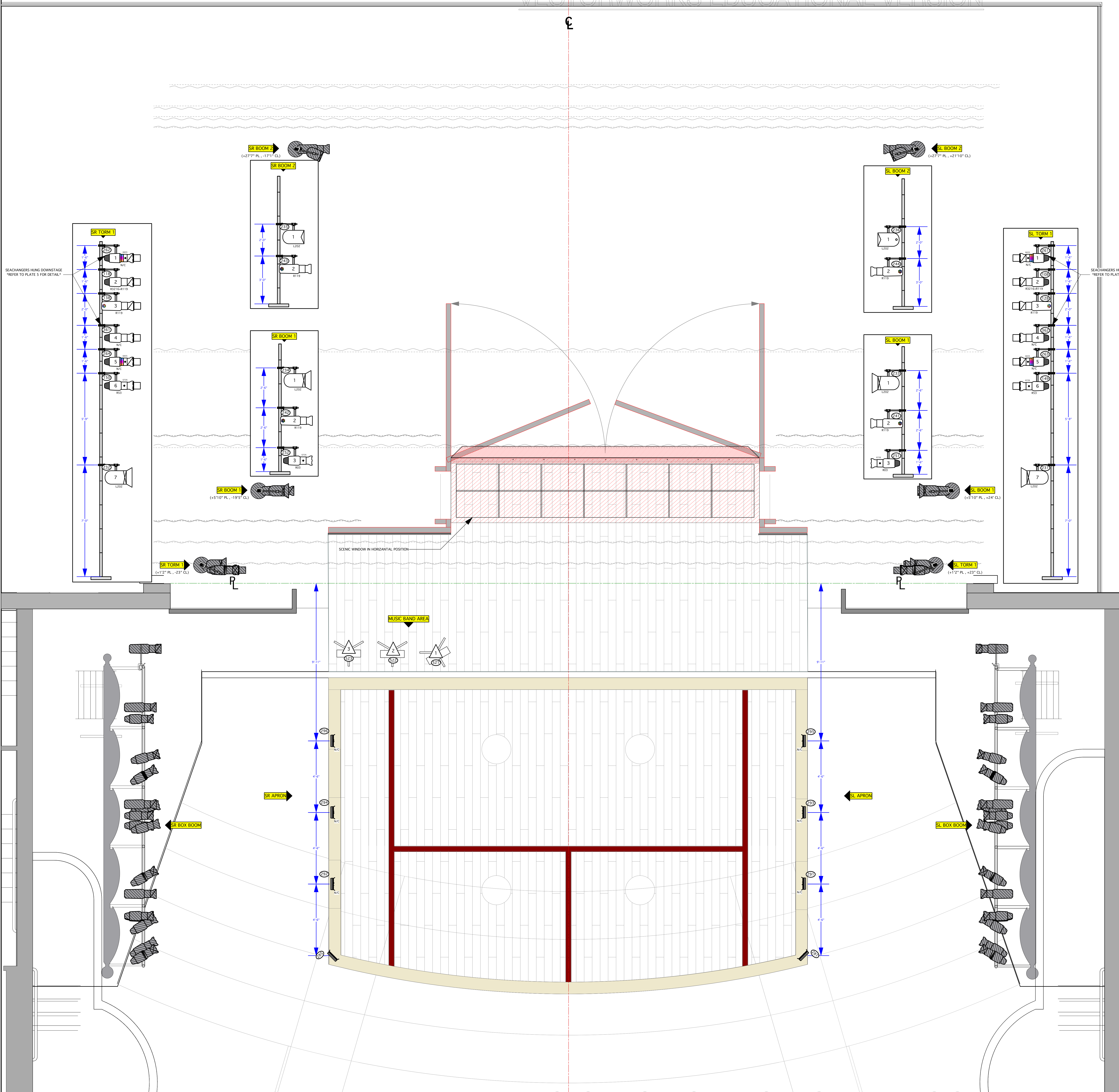
DRAWN BY: Matthew J. Weisgable

CREATED: 08/30/21

FILE: MJW-Power/Trip.vwx

PLATE **3** OF 6

OVERHEAD GROUNDPLAN



- NOTES**
1. All Boom Positions use 8'-0" Schedule 40 1/2" Steel Pipe.
 2. All Torm Positions use 21'-0" Schedule 40 1/2" Steel Pipe.
 3. Torm Positions should be secured to the Steel Grid. Discuss with designer if any questions.
 4. Please confirm Boom and Torm location with Lighting Designer before permanently securing to stage deck.
 5. Please confirm exact location of Footlights with Lighting Designer. Footlights are mounted to stage deck.
 6. Please Drop All Accessories, Gobos, and Color prior to focus.

Fixture Modes
 SoloFrame Theatre: SoloFrame Theatre [47] + 3D
 Martin TW1: Internal Dimmer Extended [20] + 3D
 ETC Lustr: Direct Strobe [9]
 ETC Seachanger: 4 Channel [4]
 Color Kinetics Colorblast: [3]

SYMBOL KEY

- LIGHTING INSTRUMENTS**
- ETC Source4 LED2DS 19"
 - ETC Source4 LED2DS 26"
 - ETC Source4 LED2DS 36"
 - Seachanger ETC Source4 19' 750w
 - Seachanger ETC Source4 26' 750w
 - ETC Source4 15'-30' Zoom 750w
 - ETC Source4 10' 750w
 - ETC Source4 19' 750w
 - ETC Source4 26' 750w
 - ETC Source4 36' 750w
 - ETC Source4 50' 750w
 - ETC Source4 PAR NSP
 - ETC Source4 PAR WFL 750w
 - ETC Source4 PAR EXWFL 750w
 - Altman PAR64 VNSP 750w Steel Can
 - Altman PAR64 WFL 750w Aluminum Can
 - Altman PAR64 WFL 750w Steel Can
 - L&E 6 Circuit Altman Cyc Light
 - Altman Q-Lite Jr
 - ColorBlast 12 Narrow
 - Practical (LED High Bay Fixture)
 - Practical
 - Martin Mac TW1
 - High End SoloFrame Theater

- ACCESSORIES**
- 6.25" Top Hat
 - 7.5" ColorRam II Scroller
 - 14" Side Arm
 - 7.5" Top Hat
 - 10" Short Top Hat
 - 10" 4 Leaf Barn Door
 - 7.5" 4 Leaf Barn Door
- SFX**
- Base Hazer
 - MDG Hazer with Tank

- LEGEND**
- 1 - CHANNEL
 - 2 - 750w 120v LAMP
 - 3 - 575w 120v LAMP
 - 4 - INSTRUMENT
 - 5 - GOGO
 - 6 - #
 - 7 - STATIC A SIZE TEMPLATE
 - 8 - COLOR SCROLLER
 - 9 - COLOR
 - 10 - ZOOM DEGREE

THIS DRAWING REPRESENTS VISUAL CONCEPTS AND CONSTRUCTION SUGGESTIONS ONLY. IT DOES NOT REPLACE THE KNOWLEDGE AND ADVICE OF A LICENSED STRUCTURAL ENGINEER. THE DESIGNERS ARE UNQUALIFIED TO DETERMINE THE STRUCTURAL APPROPRIATENESS OF THIS DESIGN AND WILL NOT ASSUME RESPONSIBILITY FOR IMPROPER ENGINEERING OR USE.

POWER/TRIP
 WRITTEN & DIRECTED BY ANNE DEMELO
 PHILIP CHOSKY THEATRE
 OCT 10TH - 12TH 2021

Director.....ANNE DEMELO
 Scenic Design.....EVAN FRANK
 Costume Design.....LILY CUNICELLI
 Production Manager.....SARAH BAUCH
 Lighting Manager.....THOMAS FEATHER
 Assistant Lighting Manager.....ALEXA JANOSCHKA
 EOS Programmer.....JAMES GALLO

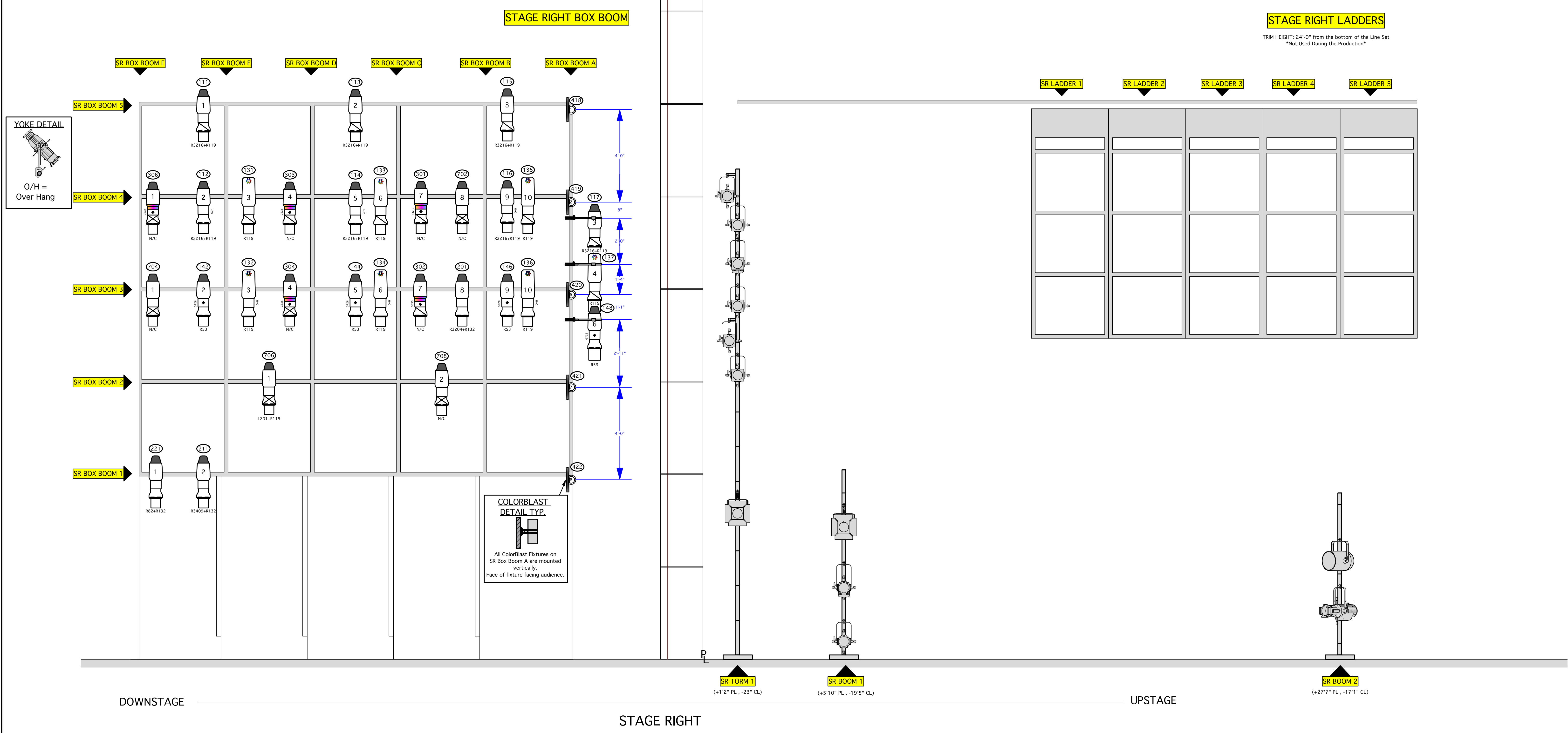
MATTHEW J. WEISGABLE
 LIGHTING DESIGN
MJW
 LIGHTING DESIGN

PRINT PAPER SIZE: **ARCH E**

REV	REVISION	DATE
FINAL		09/14/21
3rd Pass		09/11/21
2nd Pass		09/9/21
Rough Plot		09/7/21

REV	REVISION	DATE	PLATE
1	COMPOSITE GP		1
2	TENSION GRID GP		2
3	OVERHEAD GP		3
4	DECK GP		4
5	BOX BOOMS/LADDERS		5
6	SECTION		6

SCALE: 1/2" = 1'-0"
 DRAWN BY: Matthew J. Weisgable
 CREATED: 08/30/21
 FILE: MJW-Power/Trip.vwx



SYMBOL KEY

LIGHTING INSTRUMENTS

- ETC Source4 LED2DS 19"
- ETC Source4 LED2DS 26"
- ETC Source4 LED2DS 36"
- Seachanger ETC Source4 19' 750w
- Seachanger ETC Source4 26' 750w
- ETC Source4 15'-30' Zoom 750w
- ETC Source4 10' 750w
- ETC Source4 19' 750w
- ETC Source4 26' 750w
- ETC Source4 36' 750w
- ETC Source4 50' 750w
- ETC Source4 PAR NSP
- ETC Source4 PAR WFL 750w
- ETC Source4 PAR EXWFL 750w
- Altman PAR64 VNSP 750w Steel Can
- Altman PAR64 WFL 750w Aluminum Can
- Altman PAR64 WFL 750w Steel Can
- L&E 6 Circuit Altman Cyc Light
- Altman Q-Lite Jr
- ColorBlast 12 Narrow
- Practical (LED High Bay Fixture)
- Practical
- Martin Mac TW1
- High End SolafRame Theater

ACCESSORIES

- 6.25" Top Hat
- 7.5" Top Hat
- 7.5" ColorRam II Scroller
- 10" Short Top Hat
- 10" 4 Leaf Barn Door
- 14" Side Arm
- 7.5" 4 Leaf Barn Door

SFX

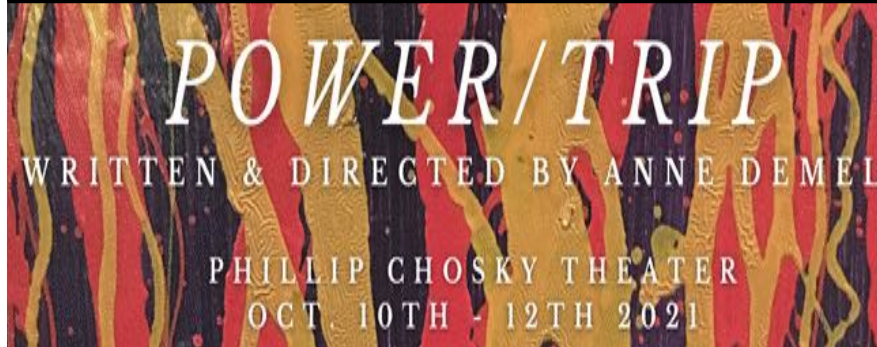
- Base Hazer
- MDG Hazer with Tank

- NOTES**
- All Boom Positions use 8'-0" Schedule 40 1/2" Steel Pipe.
 - All Torm Positions use 21'-0" Schedule 40 1/2" Steel Pipe.
 - Torm Positions should be secured to the Steel Grid. Discuss with designer if any questions.
 - Refer to Colorblast detail on fixture hang.
 - Please Drop All Accessories, Gobos, and Color prior to focus.
 - Fixture yokes indicated on specified fixtures.

LEGEND

- 1 - CHANNEL
- 750w 120v LAMP
- 575w 120v LAMP
- 1 - INSTRUMENT
- # - STATIC A SIZE TEMPLATE
- COLOR - COLOR SCROLLER
- Z - ZOOM DEGREE

THIS DRAWING REPRESENTS VISUAL CONCEPTS AND CONSTRUCTION SUGGESTIONS ONLY. IT DOES NOT REPLACE THE KNOWLEDGE AND ADVICE OF A LICENSED STRUCTURAL ENGINEER. THE DESIGNERS ARE UNQUALIFIED TO DETERMINE THE STRUCTURAL APPROPRIATENESS OF THIS DESIGN AND WILL NOT ASSUME RESPONSIBILITY FOR IMPROPER ENGINEERING OR USE.



Director.....ANNE DEMELO
 Scenic Design.....EVAN FRANK
 Costume Design.....LILY CUNICELLI
 Production Manager.....SARAH BAUCH
 Lighting Manager.....THOMAS FEATHER
 Assistant Lighting Manager.....ALEXA JANOSCHKA
 EOS Programmer.....JAMES GALLO

Carnegie Mellon University School of Drama

MATTHEW J. WEISGABLE
 LIGHTING DESIGN

Matthew J. Weisgable
 622 Bayview Street
 Pittsburgh, PA 15212
 P: (412) 268-1000
 F: (412) 268-1005

PRINT PAPER SIZE: **ARCH E**

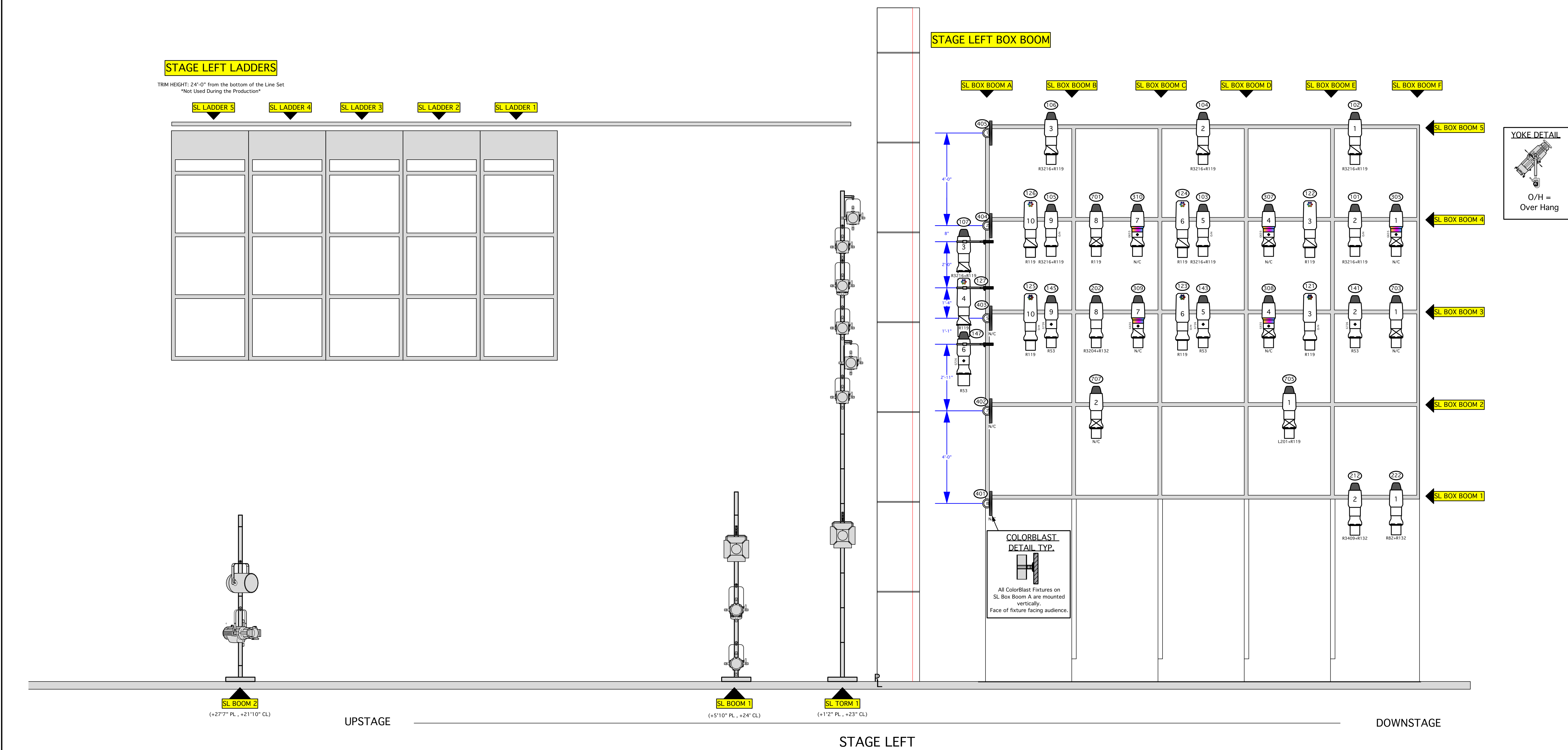
REV	REVISION	DATE
FINAL		09/14/21
3rd Pass		09/11/21
2nd Pass		09/09/21
Rough Plot		09/07/21

Drawing Index

- COMPOSITE GP
- TENSION GRID GP
- OVERHEAD GP
- DECK GP
- BOX BOOMS/LADDERS
- SECTION

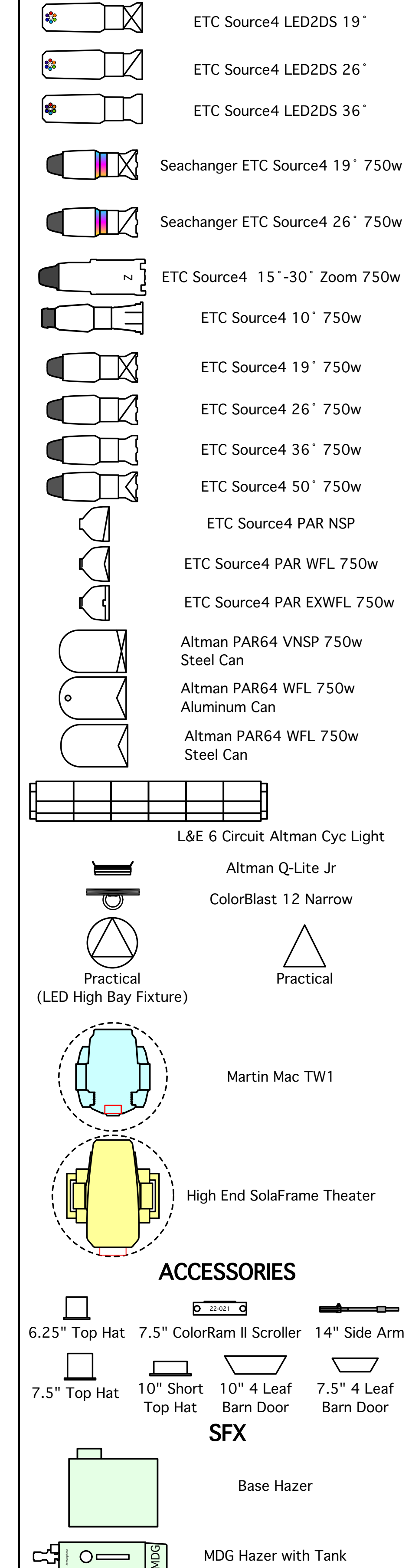
SCALE: 1/2" = 1'-0"
 DRAWN BY: Matthew J. Weisgable
 CREATED: 08/30/21
 FILE: MJW-Power/Trip.vwx

PLATE **5** OF 6

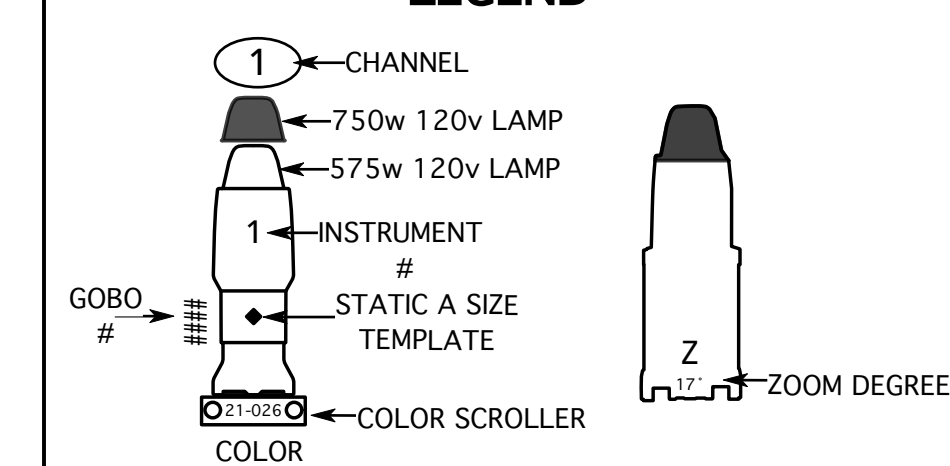


SYMBOL KEY

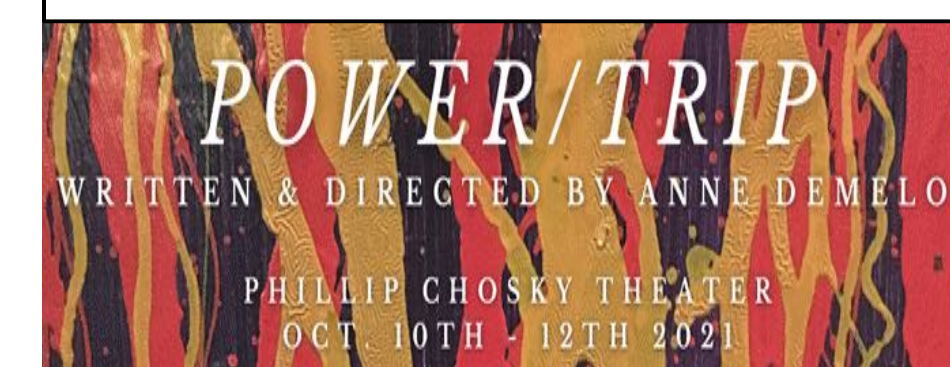
LIGHTING INSTRUMENTS



LEGEND



THIS DRAWING REPRESENTS VISUAL CONCEPTS AND CONSTRUCTION SUGGESTIONS ONLY. IT DOES NOT REPLACE THE KNOWLEDGE AND ADVICE OF A LICENSED STRUCTURAL ENGINEER. THE DESIGNERS ARE UNQUALIFIED TO DETERMINE THE STRUCTURAL APPROPRIATENESS OF THIS DESIGN AND WILL NOT ASSUME RESPONSIBILITY FOR IMPROPER ENGINEERING OR USE.



Director.....ANNE DEMELO
 Scenic Design.....EVAN FRANK
 Costume Design.....LILY CUNICELLI
 Production Manager.....SARAH BAUCH
 Lighting Manager.....THOMAS FEATHER
 Assistant Lighting Manager.....ALEXA JANKOSKI
 EOS Programmer.....JAMES GALLO

Carnegie Mellon University
 School of Drama
 PHILIP CHOSKY THEATRE
 4908 Forbes Ave,
 Pittsburgh, PA, 15213

MATTHEW J. WEISGABLE
LIGHTING DESIGN
 Matthew J. Weisgable
 422 Boronia Street
 Pittsburgh, PA 15217
 P: 412-765-1521
 M: 412-442-8805

PRINT PAPER SIZE: **ARCH E**

REV	REVISION	DATE	Drawing Index
FINAL		09/14/21	1 - COMPOSITE GP
3rd Pass		09/11/21	2 - TENSION GRID GP
2nd Pass		09/09/21	3 - OVERHEAD GP
			4 - DECK GP
			5 - BOX BOOMS/LADDERS
			6 - SECTION

SCALE: 3/8" = 1'-0"
 DRAWN BY: Matthew J. Weisgable
 CREATED: 08/30/21
 FILE: MJW-Power/Trip.vvx

PLATE
6
 OF 6

SECTION

Lineset #	1	2	3	4	5	6	7	8	9	10	11	12	13	14	15	16	17	18	19	20	21	22	23	24	25	26	27	28	29	30	31	32	33	34	35	36	37	38	39	40	41	42	43	44	45	46	47	48	49	50	51	52														
Trim Height #1	38'-0"	33'-0"	42'-5"	30'-0"	20'-0"	20'-0"	20'-0"	20'-0"	20'-0"	20'-0"	20'-0"	20'-0"	20'-0"	20'-0"	20'-0"	20'-0"	20'-0"	20'-0"	20'-0"	20'-0"	20'-0"	20'-0"	20'-0"	20'-0"	20'-0"	20'-0"	20'-0"	20'-0"	20'-0"	20'-0"	20'-0"	20'-0"	20'-0"	20'-0"	20'-0"	20'-0"	20'-0"	20'-0"	20'-0"	20'-0"	20'-0"	20'-0"	20'-0"	20'-0"	20'-0"	20'-0"	20'-0"	20'-0"	20'-0"																	
Trim Height #2	1'-3"	1'-11"	2'-7"	3'-3"	4'-7"	5'-3"	5'-11"	6'-7"	7'-11"	8'-7"	9'-3"	10'-7"	11'-3"	11'-11"	12'-7"	13'-3"	13'-11"	14'-7"	15'-11"	16'-7"	17'-3"	17'-11"	18'-7"	19'-3"	20'-7"	21'-3"	21'-11"	22'-7"	23'-11"	24'-7"	25'-3"	25'-11"	26'-7"	27'-3"	27'-11"	28'-7"	29'-3"	29'-11"	30'-7"	31'-3"	31'-11"	32'-7"	33'-3"	34'-7"	35'-3"	35'-11"	36'-7"	37'-3"	38'-7"	39'-3"	40'-7"	41'-3"	41'-11"	42'-7"	43'-3"	43'-11"	44'-7"	45'-3"	45'-11"	46'-7"	47'-3"	48'-7"	49'-3"	50'-7"	51'-3"	52'-7"

NOTES
 1. LINE SET 3 Live Files During the Production.
 2. LINE SET 42 Live Files During the Production.