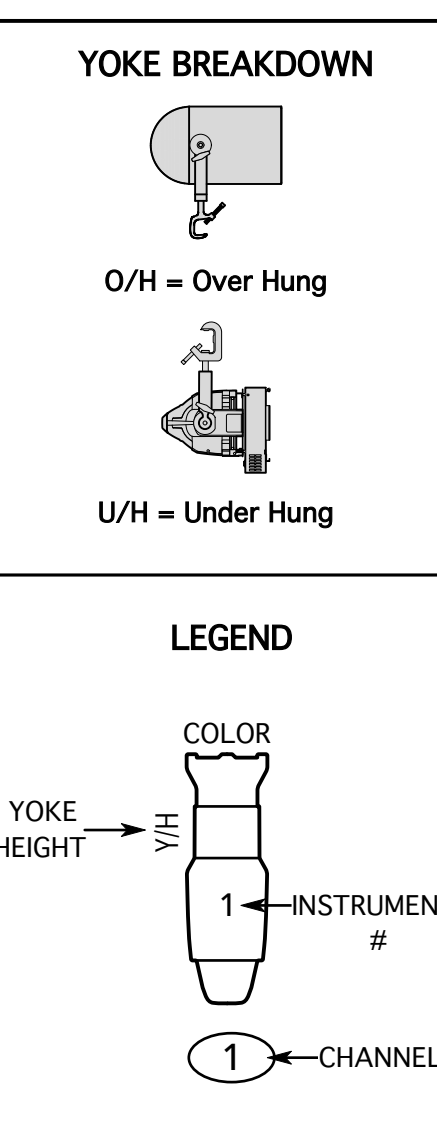


12-019 COLOR SCROLL

%	Color	Frame
0%	W024 - Clear	1
6%	L201 - Full CTB	2
13%	G841 - Diamond Blue	3
19%	R83 - Medium Blue	4
26%	R355 - Pale Violet	5
33%	R58 - Deep Lavender	6
39%	R47 - Light Rose Purple	7
45%	R27 - Medium Red	8
53%	G104 - Broadway Rose	9
60%	R31 - Salmon Pink	10
66%	R318 - Mayan Sun	11
73%	R321 - Soft Golden Amber	12
80%	R09 - Pale Amber Gold	13
87%	R73 - Peacock Blue	14
93%	R77 - Green Blue	15
100%	R91 - Primary Green	16



ASSASSINS

THIS DRAWING REPRESENTS VISUAL CONCEPTS AND CONSTRUCTION SUGGESTIONS ONLY. IT DOES NOT REPLACE THE KNOWLEDGE AND ADVICE OF A LICENSED STRUCTURAL ENGINEER. THE DESIGNERS ARE UNQUALIFIED TO DETERMINE THE STRUCTURAL APPROPRIATENESS OF THIS DESIGN AND WILL NOT ASSUME RESPONSIBILITY FOR IMPROPER ENGINEERING OR USE.

MATTHEW J. WEISGABLE
LIGHTING DESIGN
M JW LIGHTING DESIGN
Matthew J. Weisgable
622 Blanton Street
Pittsburgh, PA 15207
E: mweisgab@andrew.cmu.edu
P: (203)640-8905

Director.....Cameron King
Scenic Design.....Samantha Pollock
Production Manager.....Ella Rosenblum
Lighting Manager.....Thomas Feather
Assistant Lighting Manager.....Alexa Janoschka
EOS Programmer.....Sydney Asselin

Carnegie Mellon University
School of Drama

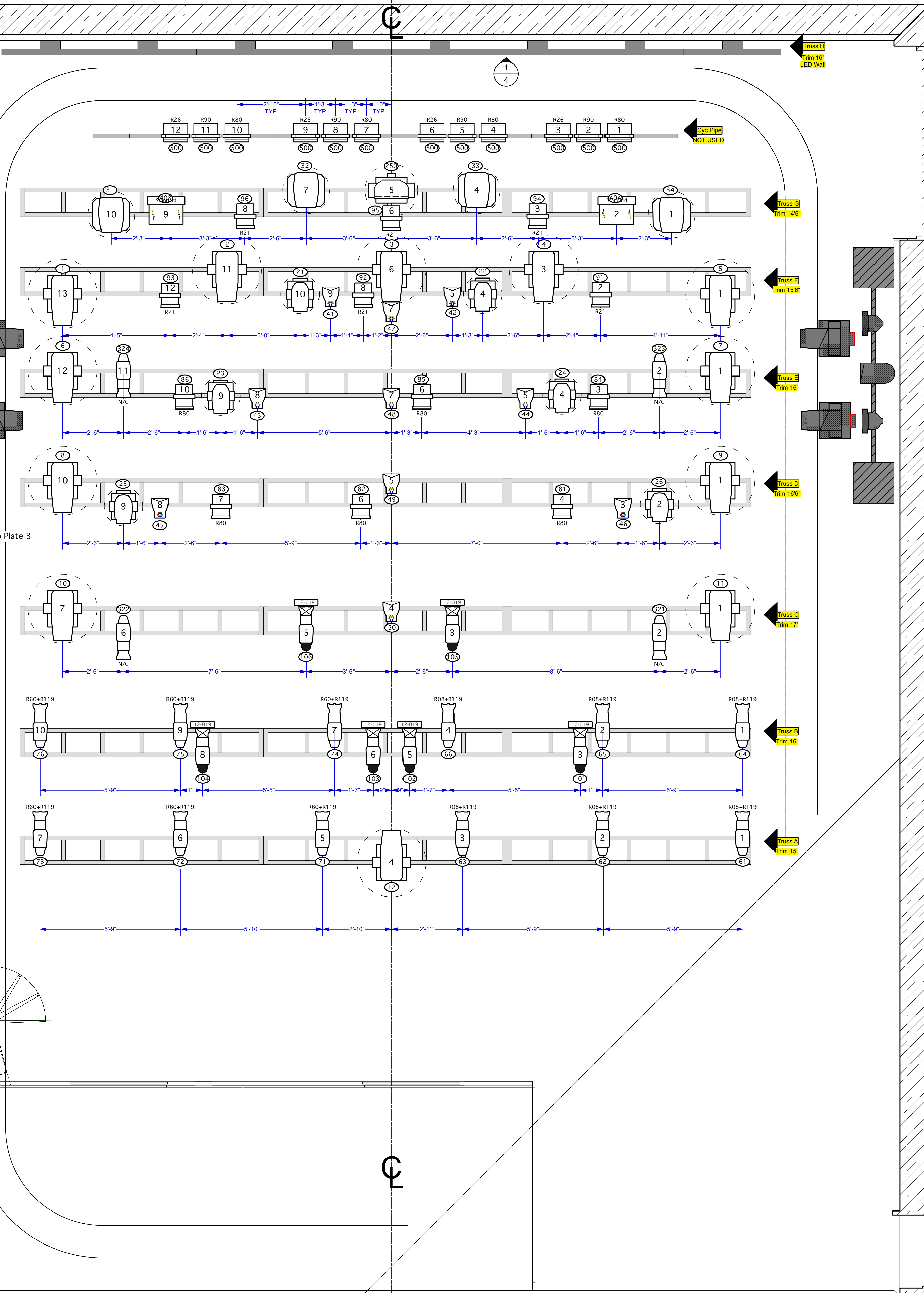
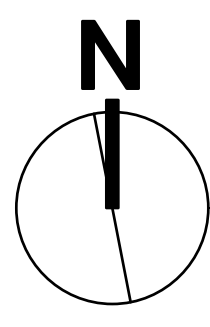
WELLS VIDEO STUDIO THEATRE
4908 Forbes Ave.,
Pittsburgh, PA 15213

SCALE: 1/2" = 1'-0"
DRAWN BY: Matthew J. Weisgable
CREATED: 01/27/21
FILE: Assassins Final.vwx

PLATE 1
OF 5

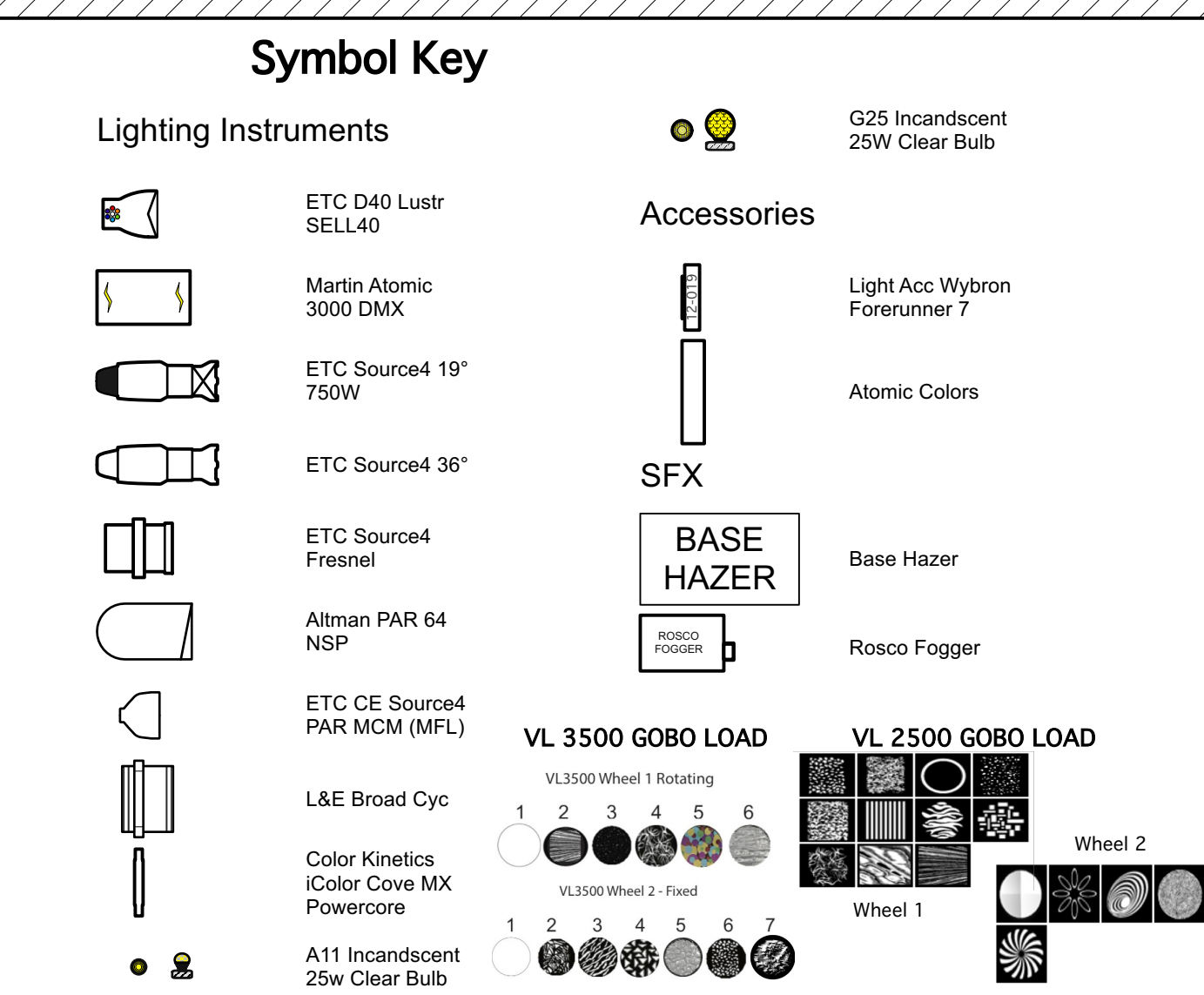
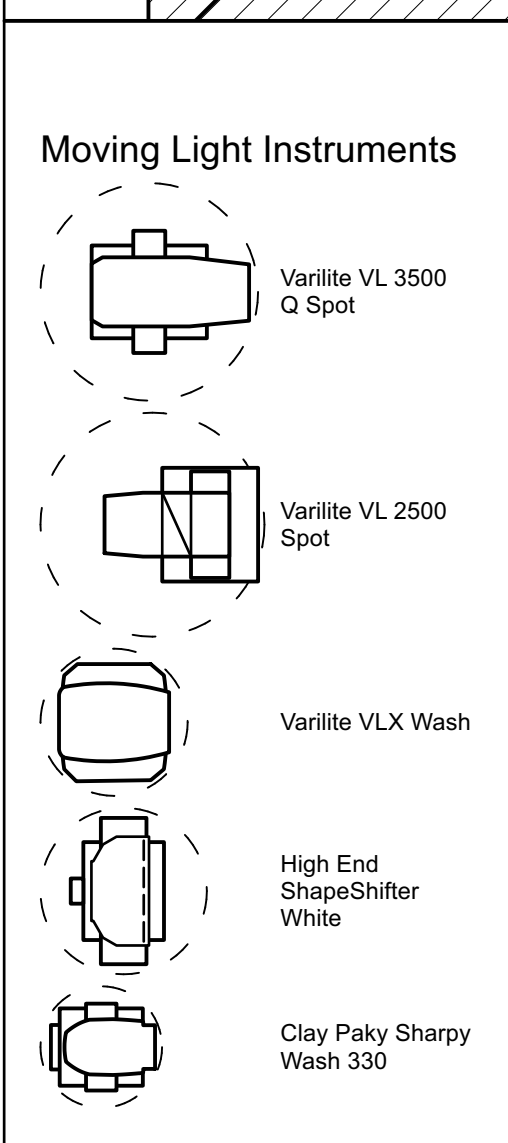
COMPOSITE GROUNDPLAN

REV	REVISION	DATE
FINAL		04/19/21
VERSION 5.0		02/18/21
VERSION 4.0		02/15/21
VERSION 3.0		02/13/21
VERSION 2.0		02/08/21
VERSION 1.0		01/28/21



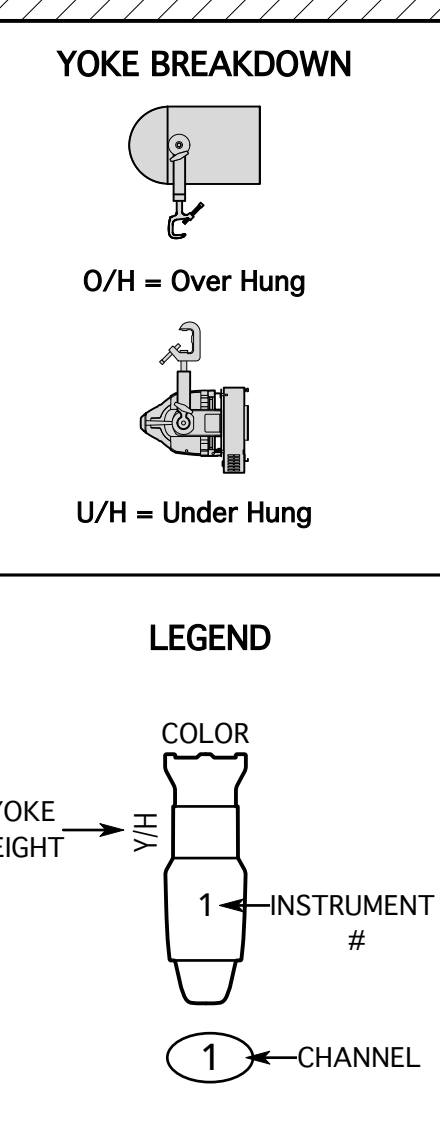
Refer to Plate 3

- Truss H Trim 16' LED Wall
- Cyc Pipe NOT USED
- Truss G Trim 14'6"
- Truss F Trim 15'6"
- Truss E Trim 16'
- Truss D Trim 16'6"
- Truss C Trim 17'
- Truss B Trim 18'
- Truss A Trim 19'



12-019 COLOR SCROLL

%	Color	Frame
0%	W024 - Clear	1
6%	L201 - Full CTB	2
13%	G841 - Diamond Blue	3
19%	R83 - Medium Blue	4
26%	R355 - Pale Violet	5
33%	R58 - Deep Lavender	6
39%	R47 - Light Rose Purple	7
45%	R27 - Medium Red	8
53%	G104 - Broadway Rose	9
60%	R31 - Salmon Pink	10
66%	R318 - Mayan Sun	11
73%	R321 - Soft Golden Amber	12
80%	R09 - Pale Amber Gold	13
87%	R73 - Peacock Blue	14
93%	R77 - Green Blue	15
100%	R91 - Primary Green	16



ASSASSINS

THIS DRAWING REPRESENTS VISUAL CONCEPTS AND CONSTRUCTION SUGGESTIONS ONLY. IT DOES NOT REPLACE THE KNOWLEDGE AND ADVICE OF A LICENSED STRUCTURAL ENGINEER. THE DESIGNERS ARE UNQUALIFIED TO DETERMINE THE STRUCTURAL APPROPRIATENESS OF THIS DESIGN AND WILL NOT ASSUME RESPONSIBILITY FOR IMPROPER ENGINEERING OR USE.

MATTHEW J. WEISGABLE
LIGHTING DESIGN
MJW LIGHTING DESIGN
Matthew J. Weisgable
622 Blanton Street
Pittsburgh, PA 15207
E: mweisgab@andrew.cmu.edu
P: (203)640-8905

Director.....Cameron King
Scenic Design.....Samantha Pollock
Production Manager.....Ella Rosenblum
Lighting Manager.....Thomas Feather
Assistant Lighting Manager.....Alexa Janoschka
EOS Programmer.....Sydney Asselin

Carnegie Mellon University
School of Drama

WELLS VIDEO STUDIO THEATRE
4908 Forbes Ave.,
Pittsburgh, PA 15213

SCALE: 1/2" = 1'-0"

DRAWN BY: Matthew J. Weisgable

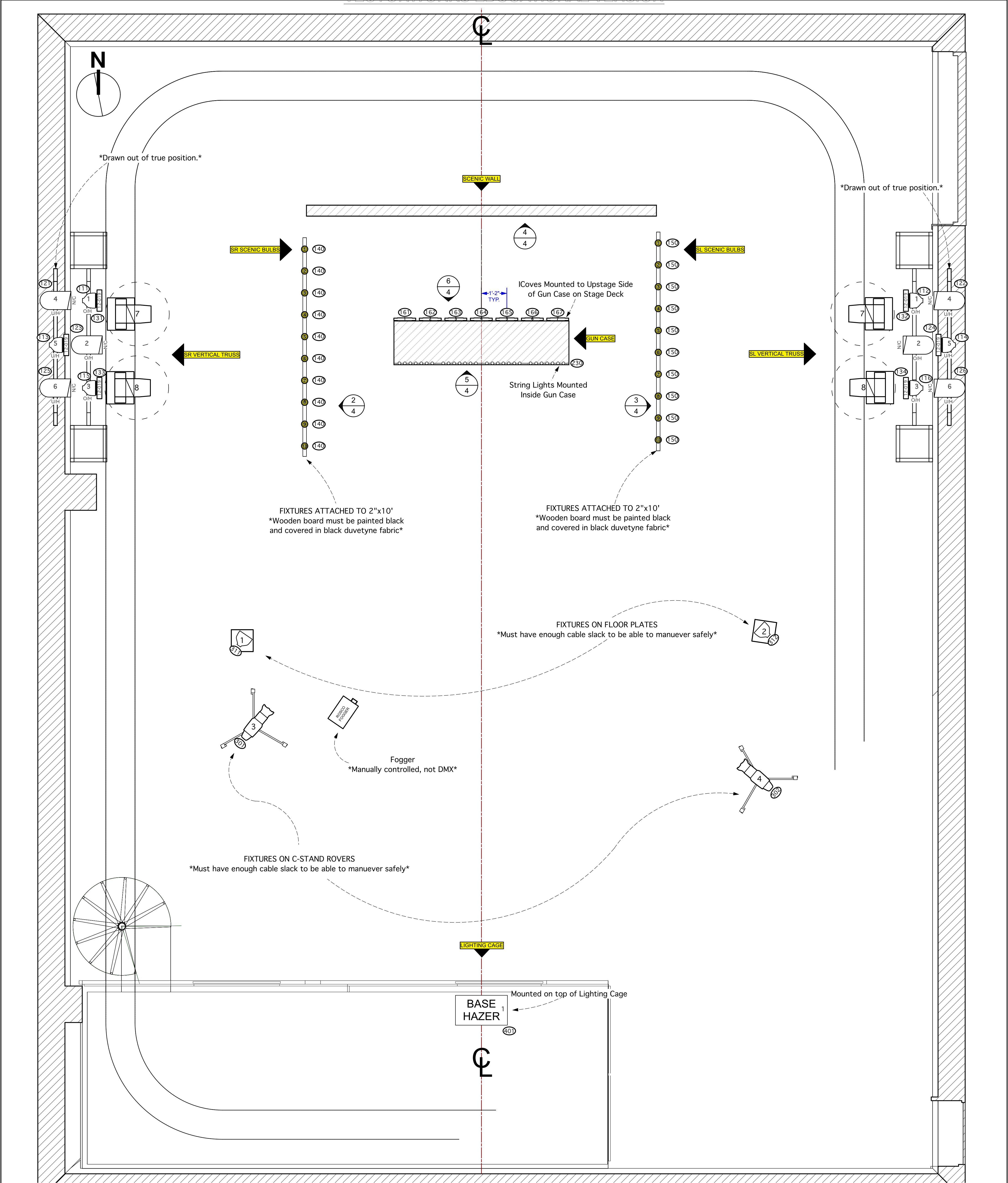
CREATED: 01/27/21

FILE: Assassins Final.vwx

OVERHEAD GROUNDPLAN

PLATE 2 OF 5

REV	REVISION	DATE
1	FINAL	04/19/21
2	VERSION 5.0	02/18/21
3	VERSION 4.0	02/15/21
4	VERSION 3.0	02/13/21
5	VERSION 2.0	02/08/21
6	VERSION 1.0	01/28/21



Symbol Key

Moving Light Instruments

- Varilite VL 3500 Q Spot
- Varilite VL 2500 Spot
- Varilite VLX Wash
- High End ShapeShifter White
- Clay Paky Sharp Wash 330

Lighting Instruments

- ETC D40 Lustr SELL40
- Martin Atomic 3000 DMX
- ETC Source4 19" 750W
- ETC Source4 36"
- ETC Source4 Fresnel
- Altman PAR 64 NSP
- ETC CE Source4 PAR MCM (MFL)
- L&E Broad Cyc
- Color Kinetics iColor Cove MX Powercore
- A11 Incandescent 25W Clear Bulb

Accessories

- Light Acc Wybron Forerunner 7
- Atomic Colors

SFX

- BASE HAZER
- ROSCO FOGGER

GOBO LOADS

- VL 3500 GOBO LOAD (Rotating Wheel 1, Fixed Wheel 2)
- VL 2500 GOBO LOAD (Wheel 1, Wheel 2)

12-019 COLOR SCROLL

%	Color	Frame
0%	W024 - Clear	1
6%	L201 - Full CTB	2
13%	G841 - Diamond Blue	3
19%	R83 - Medium Blue	4
26%	R355 - Pale Violet	5
33%	R58 - Deep Lavender	6
39%	R47 - Light Rose Purple	7
45%	R27 - Medium Red	8
53%	G104 - Broadway Rose	9
60%	R31 - Salmon Pink	10
66%	R318 - Mayan Sun	11
73%	R321 - Soft Golden Amber	12
80%	R09 - Pale Amber Gold	13
87%	R73 - Peacock Blue	14
93%	R77 - Green Blue	15
100%	R91 - Primary Green	16

YOKE BREAKDOWN

O/H = Over Hung

U/H = Under Hung

LEGEND

COLOR

YOKE HEIGHT → V/H

1 - INSTRUMENT #

1 - CHANNEL

THIS DRAWING REPRESENTS VISUAL CONCEPTS AND CONSTRUCTION SUGGESTIONS ONLY. IT DOES NOT REPLACE THE KNOWLEDGE AND ADVICE OF A LICENSED STRUCTURAL ENGINEER. THE DESIGNERS ARE UNQUALIFIED TO DETERMINE THE STRUCTURAL APPROPRIATENESS OF THIS DESIGN AND WILL NOT ASSUME RESPONSIBILITY FOR IMPROPER ENGINEERING OR USE.

MATTHEW J. WEISGABLE
LIGHTING DESIGN
MJW LIGHTING DESIGN

Matthew J. Weisgable
622 Blanton Street
Pittsburgh, PA 15207
E: mweisgab@andrew.cmu.edu
P: (203)640-8905

Drawing Index

REV	REVISION	DATE
1	Composite GP	
2	Overhead GP	
3	Deck GP	
4	Detail Elevation	
5	Section	
FINAL		04/19/21
VERSION 5.0		02/18/21
VERSION 4.0		02/15/21
VERSION 3.0		02/13/21
VERSION 2.0		02/08/21
VERSION 1.0		01/28/21

Director.....Cameron King
Scenic Design.....Samantha Pollock
Production Manager.....Ella Rosenblum
Lighting Manager.....Thomas Feather
Assistant Lighting Manager.....Alexa Janoschka
EOS Programmer.....Sydney Asselin

Carnegie Mellon University
School of Drama

WELLS VIDEO STUDIO THEATRE
4908 Forbes Ave.,
Pittsburgh, PA 15213

SCALE: 1/2" = 1'-0"

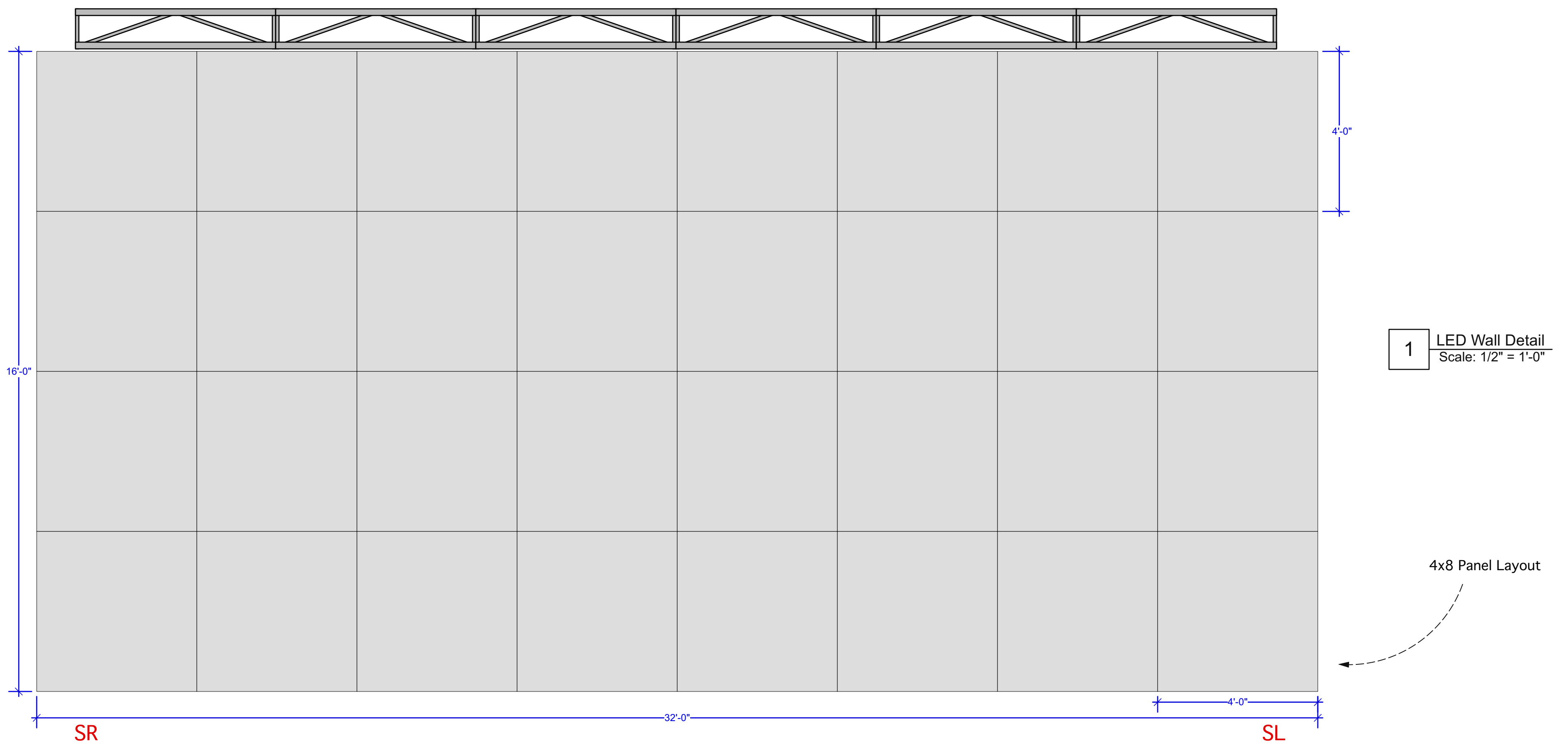
DRAWN BY: Matthew J. Weisgable

CREATED: 01/27/21

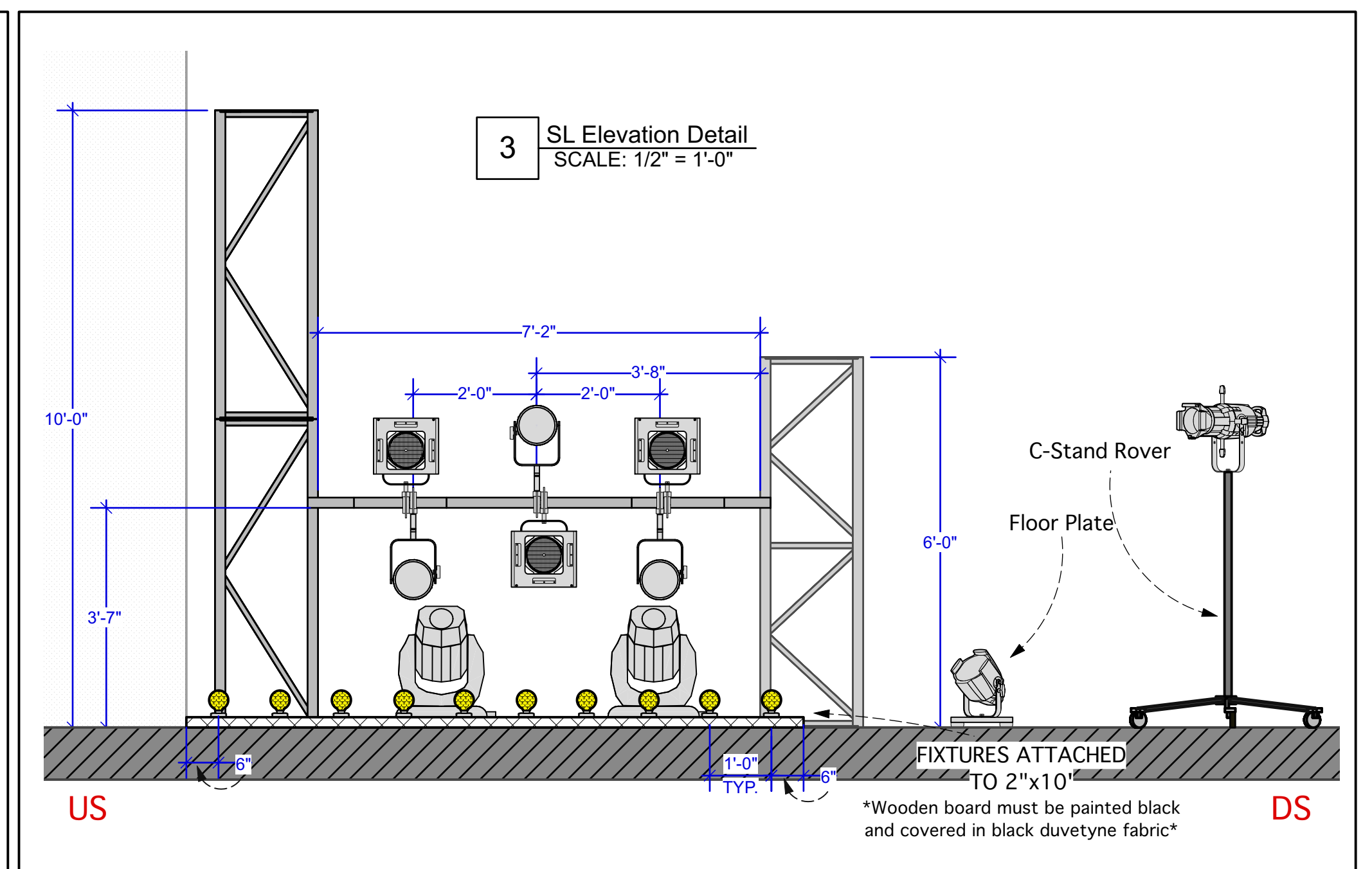
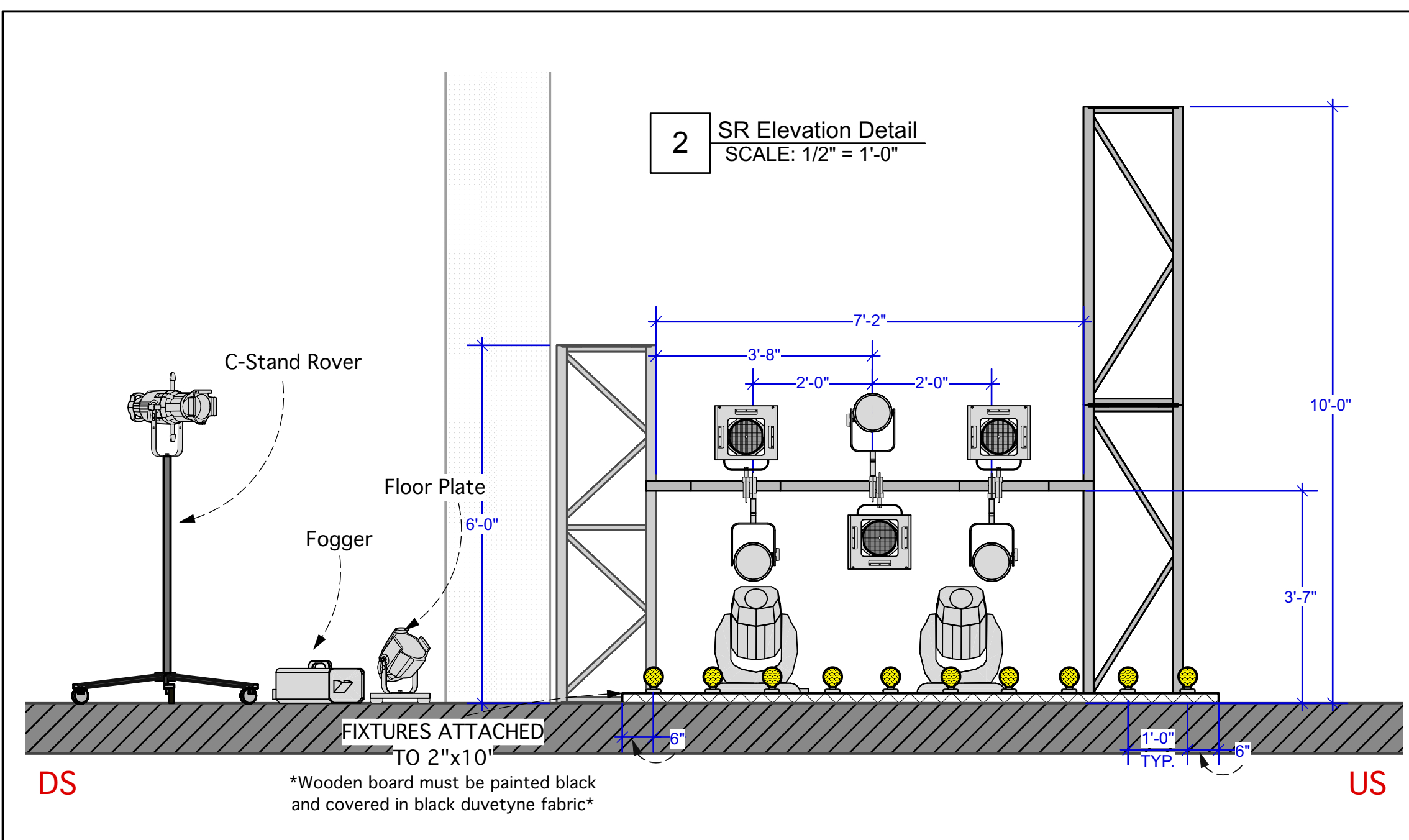
FILE: Assassins Final.vwx

DECK GROUNDPLAN

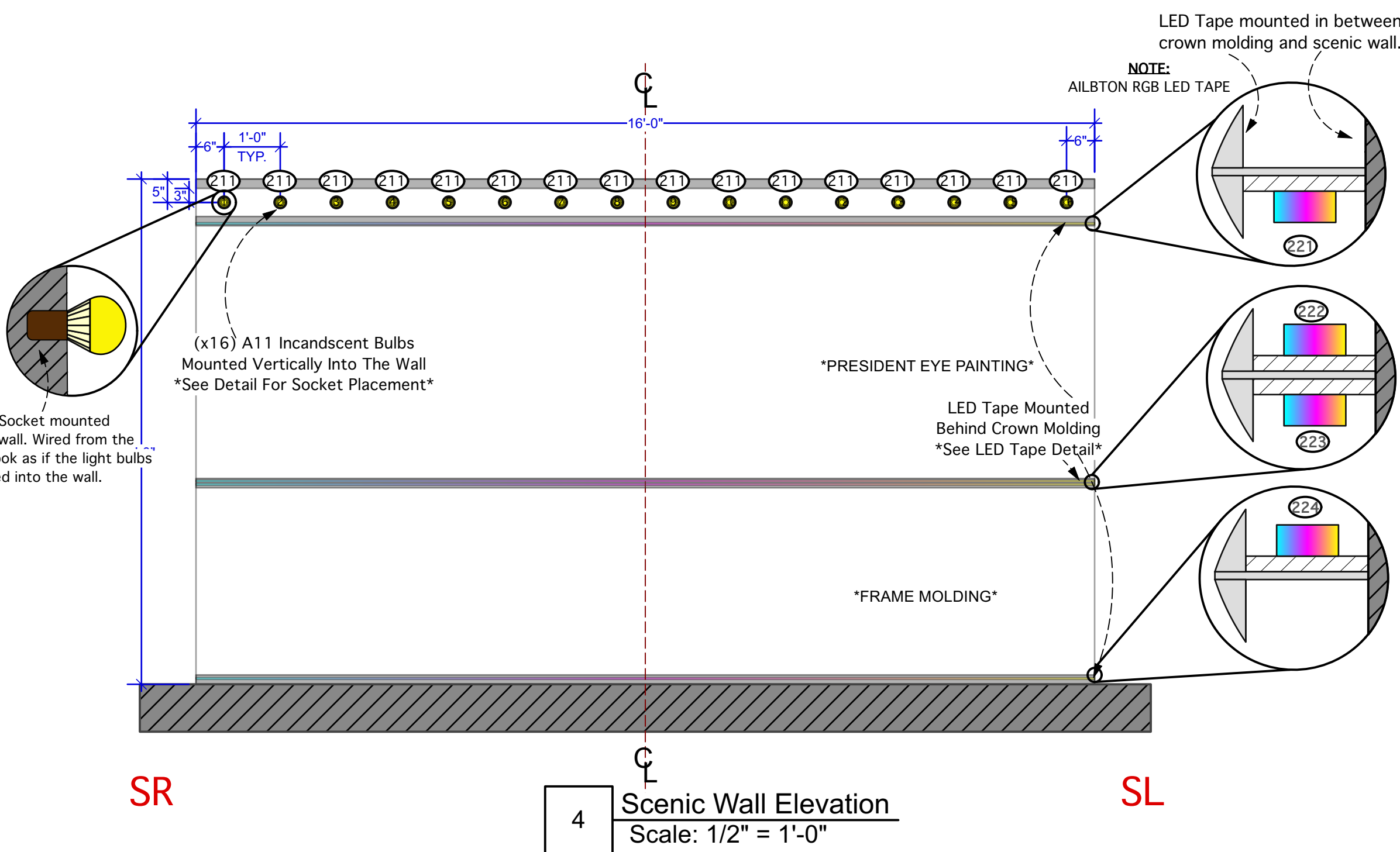
PLATE **3** OF 5



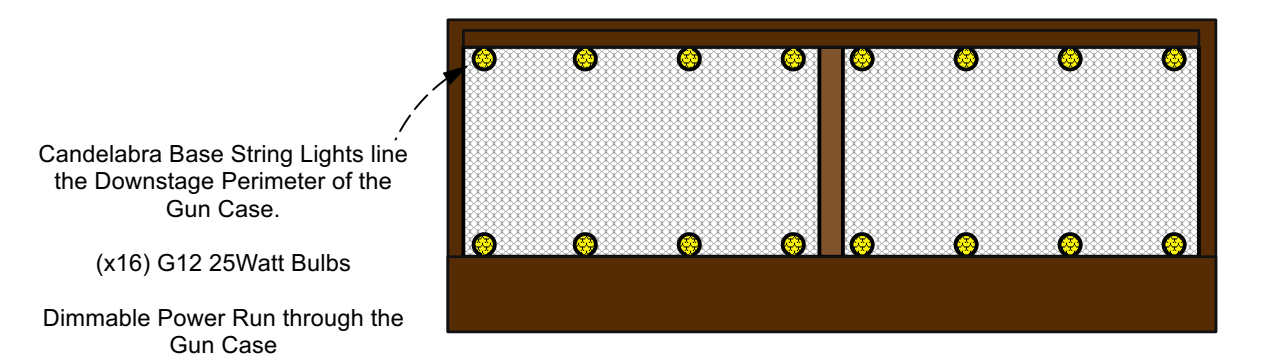
1 LED Wall Detail
Scale: 1/2" = 1'-0"



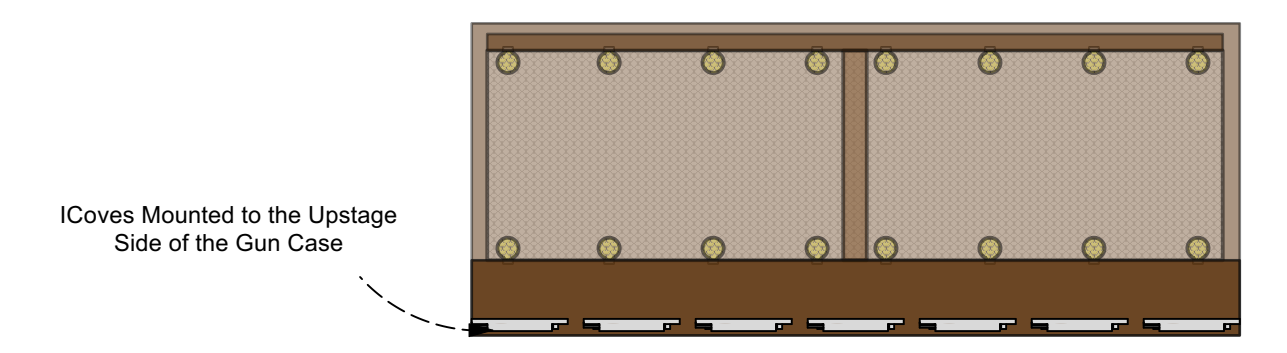
Wooden board must be painted black and covered in black duvetyne fabric



4 Scenic Wall Elevation
Scale: 1/2" = 1'-0"

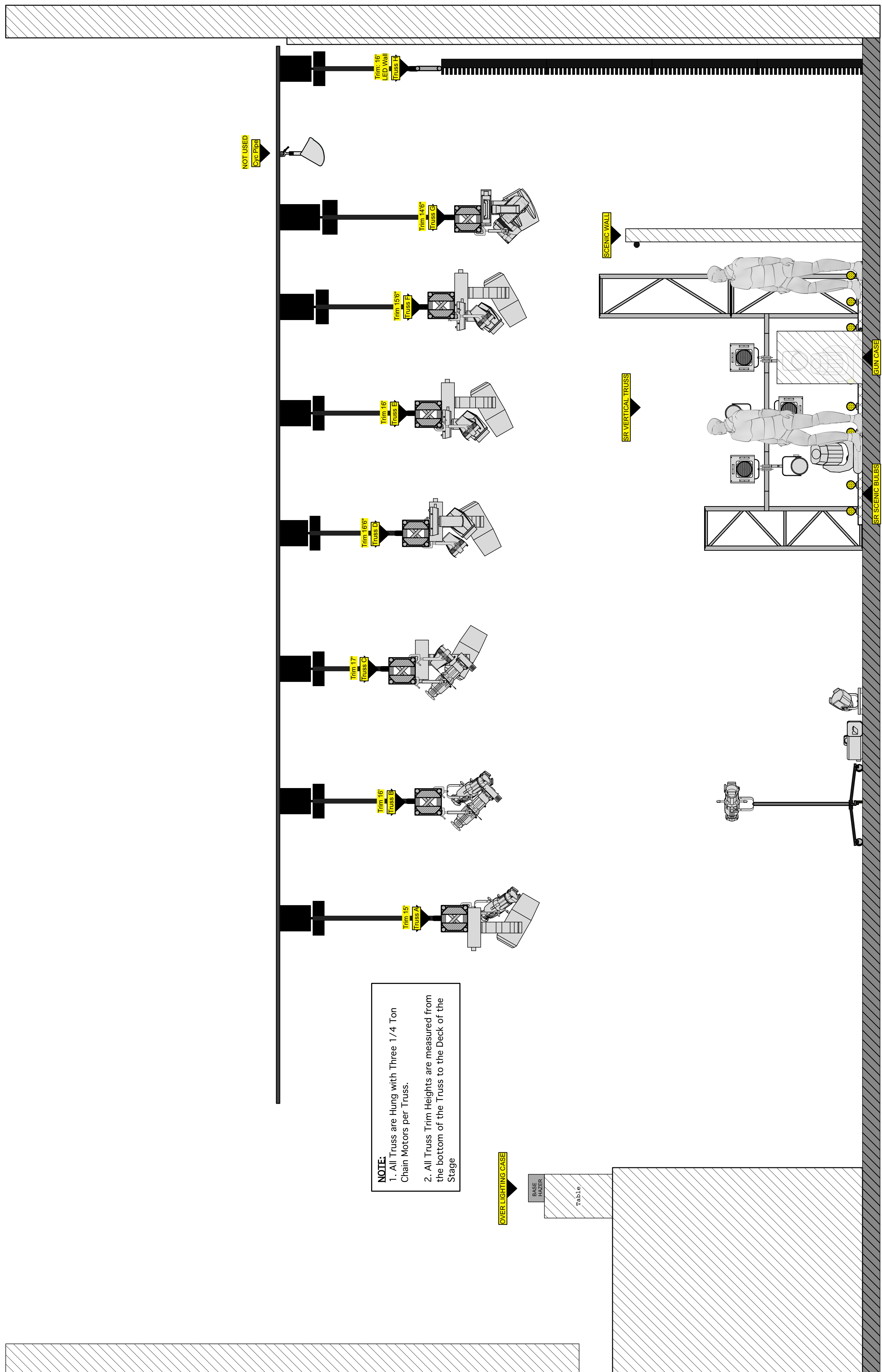


5 Gun Case Downstage Detail
Scale: 1/2" = 1'-0"

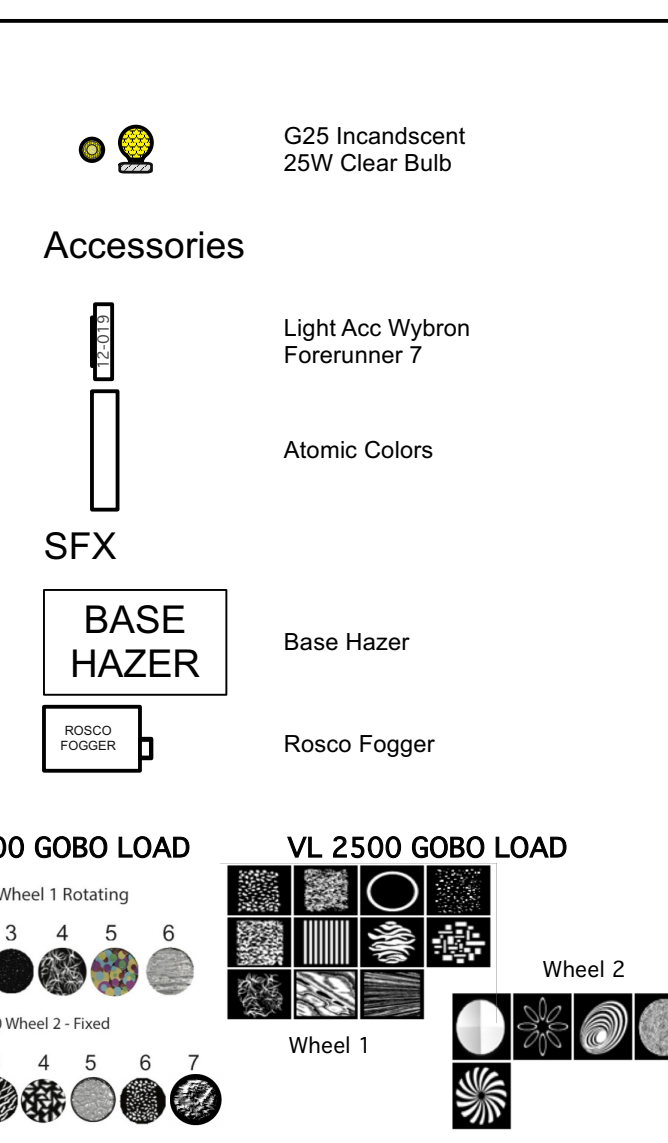
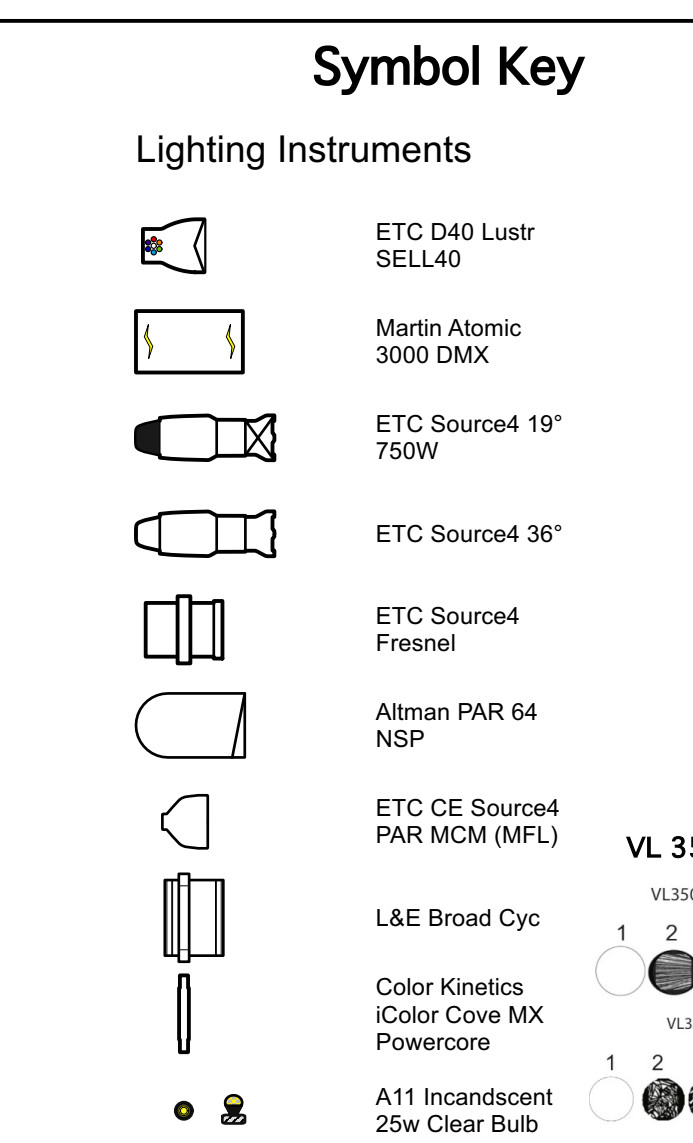
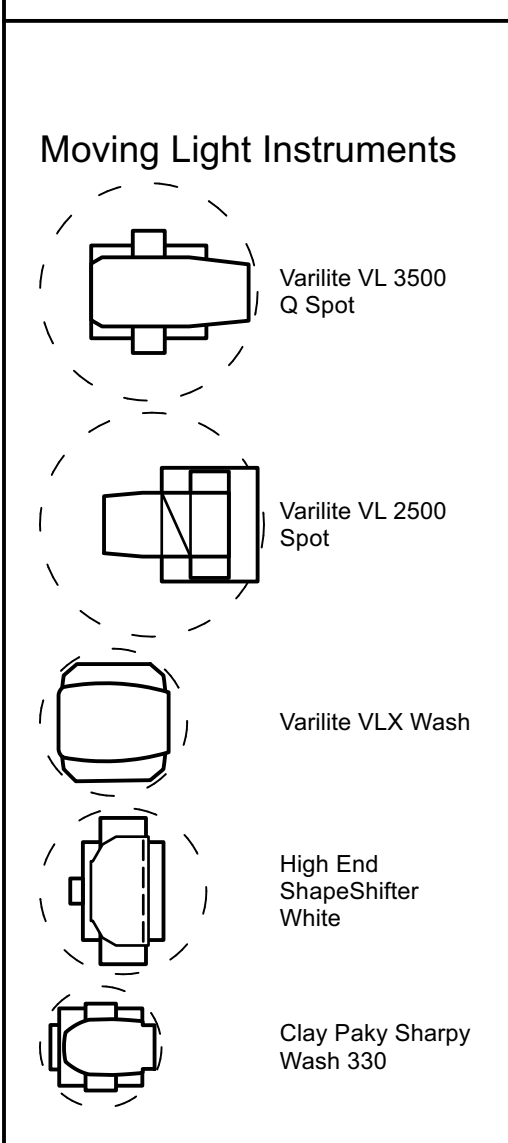


6 Gun Case Upstage Detail
Scale: 1/2" = 1'-0"

Symbol Key		12-019 COLOR SCROLL		YOKE BREAKDOWN		ASSASSINS	

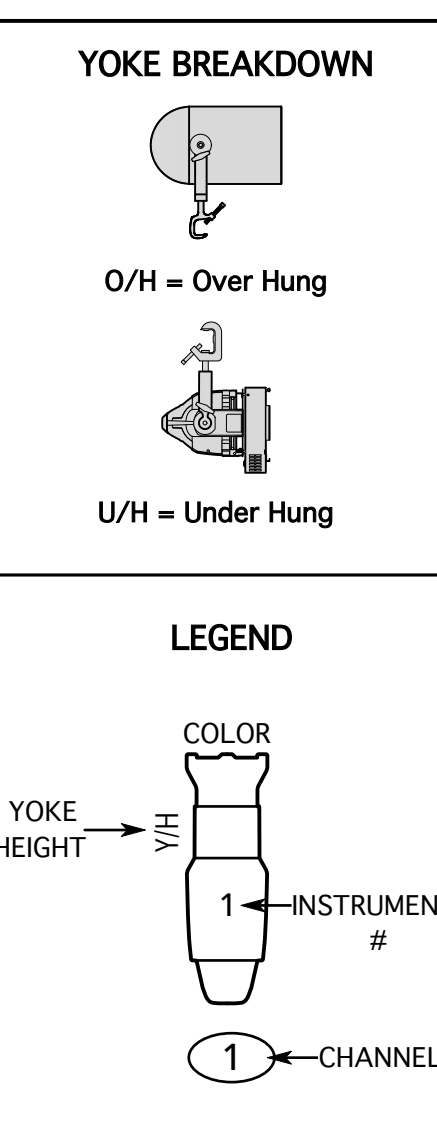


NOTE:
 1. All Truss are Hung with Three 1/4 Ton Chain Motors per Truss.
 2. All Truss Trim Heights are measured from the bottom of the Truss to the Deck of the Stage.



12-019 COLOR SCROLL

%	Color	Frame
0%	W024 - Clear	1
6%	L201 - Full CTB	2
13%	G841 - Diamond Blue	3
19%	R83 - Medium Blue	4
26%	R355 - Pale Violet	5
33%	R58 - Deep Lavender	6
39%	R47 - Light Rose Purple	7
45%	R27 - Medium Red	8
53%	G104 - Broadway Rose	9
60%	R31 - Salmon Pink	10
66%	R318 - Mayan Sun	11
73%	R321 - Soft Golden Amber	12
80%	R09 - Pale Amber Gold	13
87%	R73 - Peacock Blue	14
93%	R77 - Green Blue	15
100%	R91 - Primary Green	16



ASSASSINS

Director.....Cameron King
 Scenic Design.....Samantha Pollock
 Production Manager.....Ella Rosenblum
 Lighting Manager.....Thomas Feather
 Assistant Lighting Manager.....Alexa Janoschka
 EOS Programmer.....Sydney Asselin

MATTHEW J. WEISGABLE
LIGHTING DESIGN
 Matthew J. Weisgable
 622 Blanton Street
 Pittsburgh, PA 15207
 E: mweisgabl@andrew.cmu.edu
 P: (203)640-8905

Drawing Index

REV	REVISION	DATE
1	FINAL	04/19/21
2	VERSION 5.0	02/18/21
3	VERSION 4.0	02/15/21
4	VERSION 3.0	02/13/21
5	VERSION 2.0	02/08/21
6	VERSION 1.0	01/28/21

WELLS VIDEO STUDIO THEATRE
 4908 Forbes Ave.,
 Pittsburgh, PA 15213

SCALE: 1/2" = 1'-0"

DRAWN BY: Matthew J. Weisgable

CREATED: 01/27/21

FILE: Assassins Final.vwx

PLATE 5 OF 5

SECTION