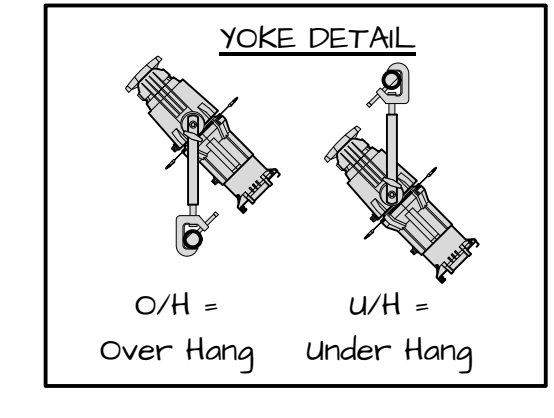
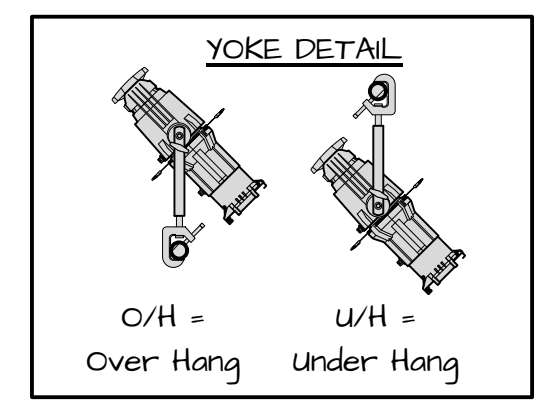
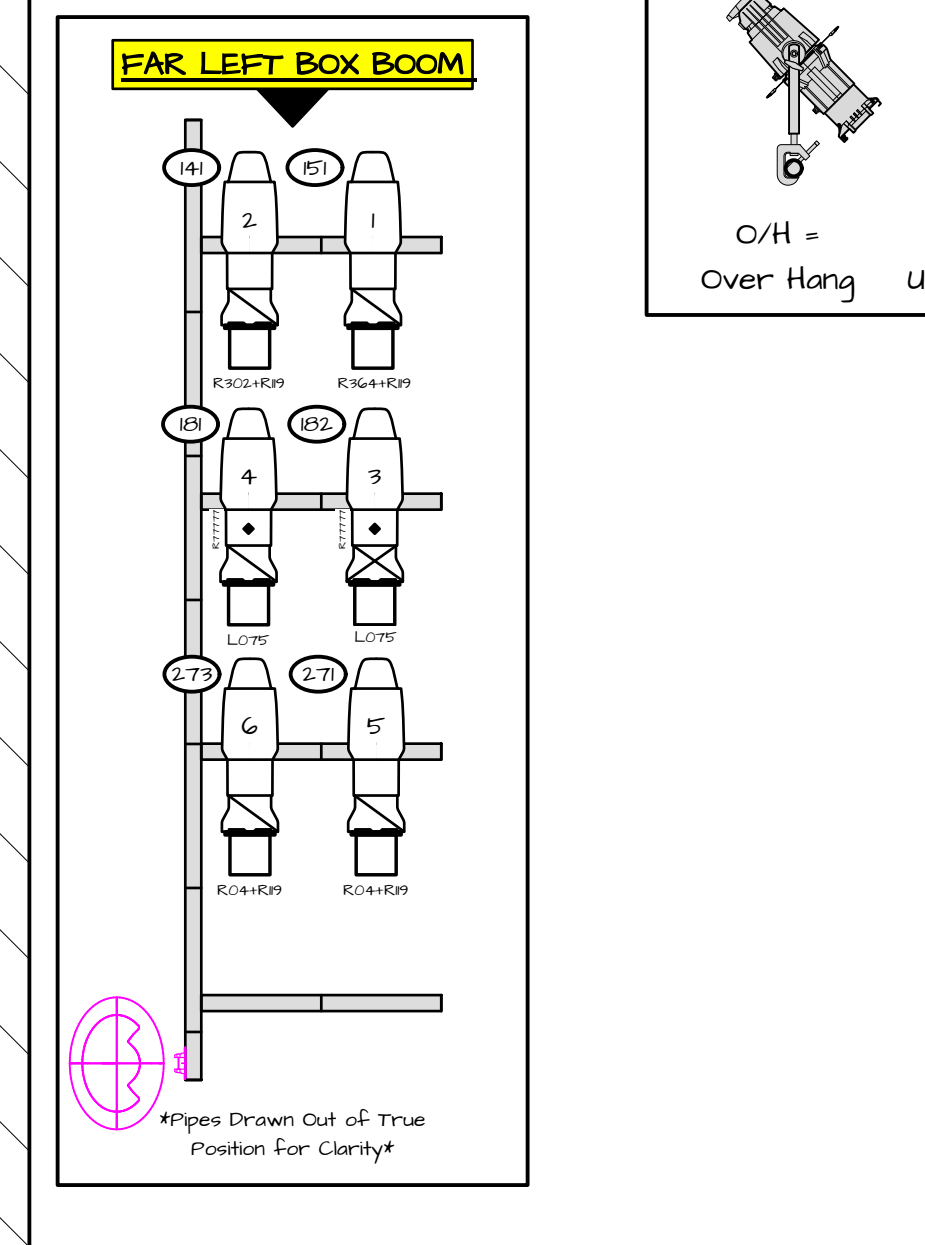
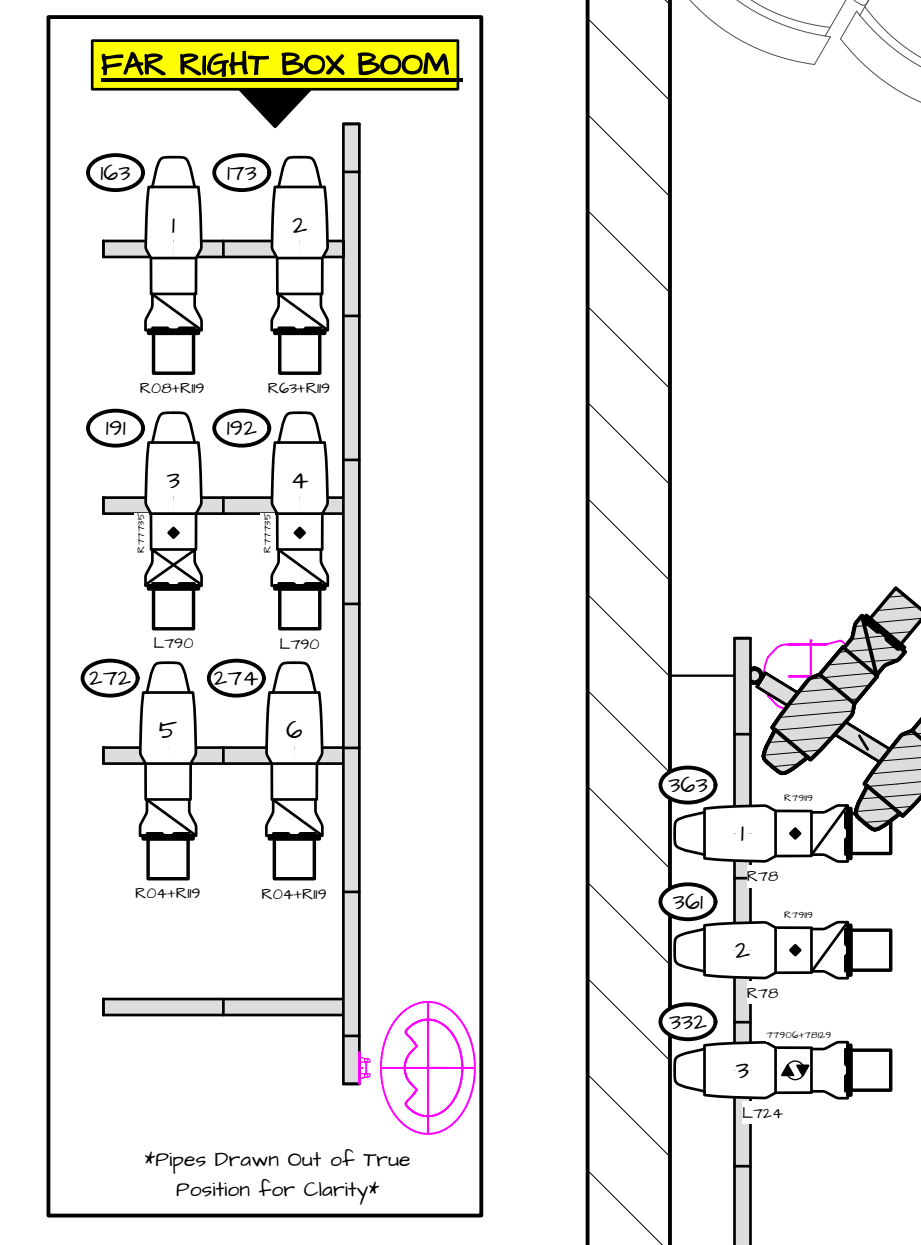
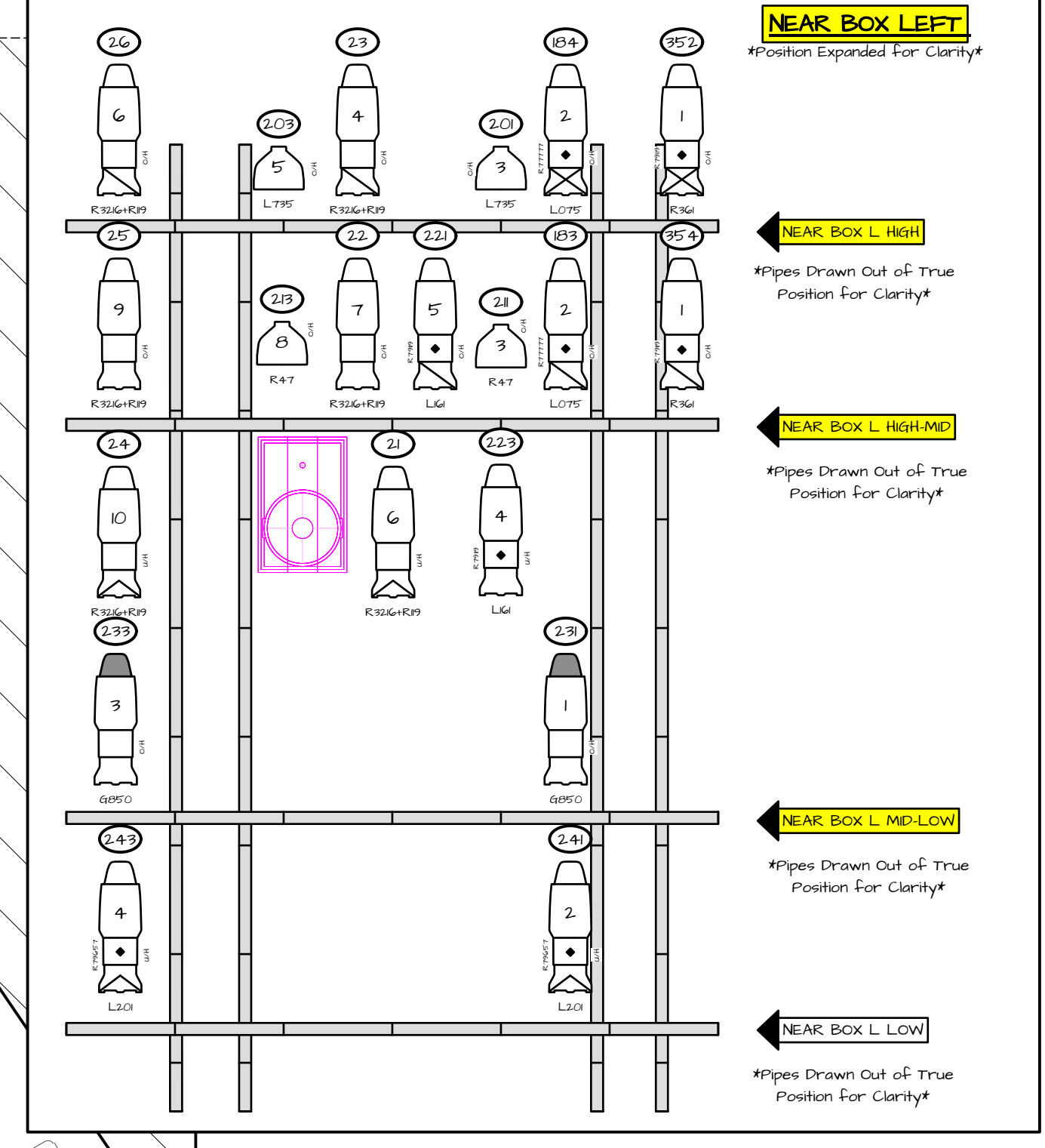
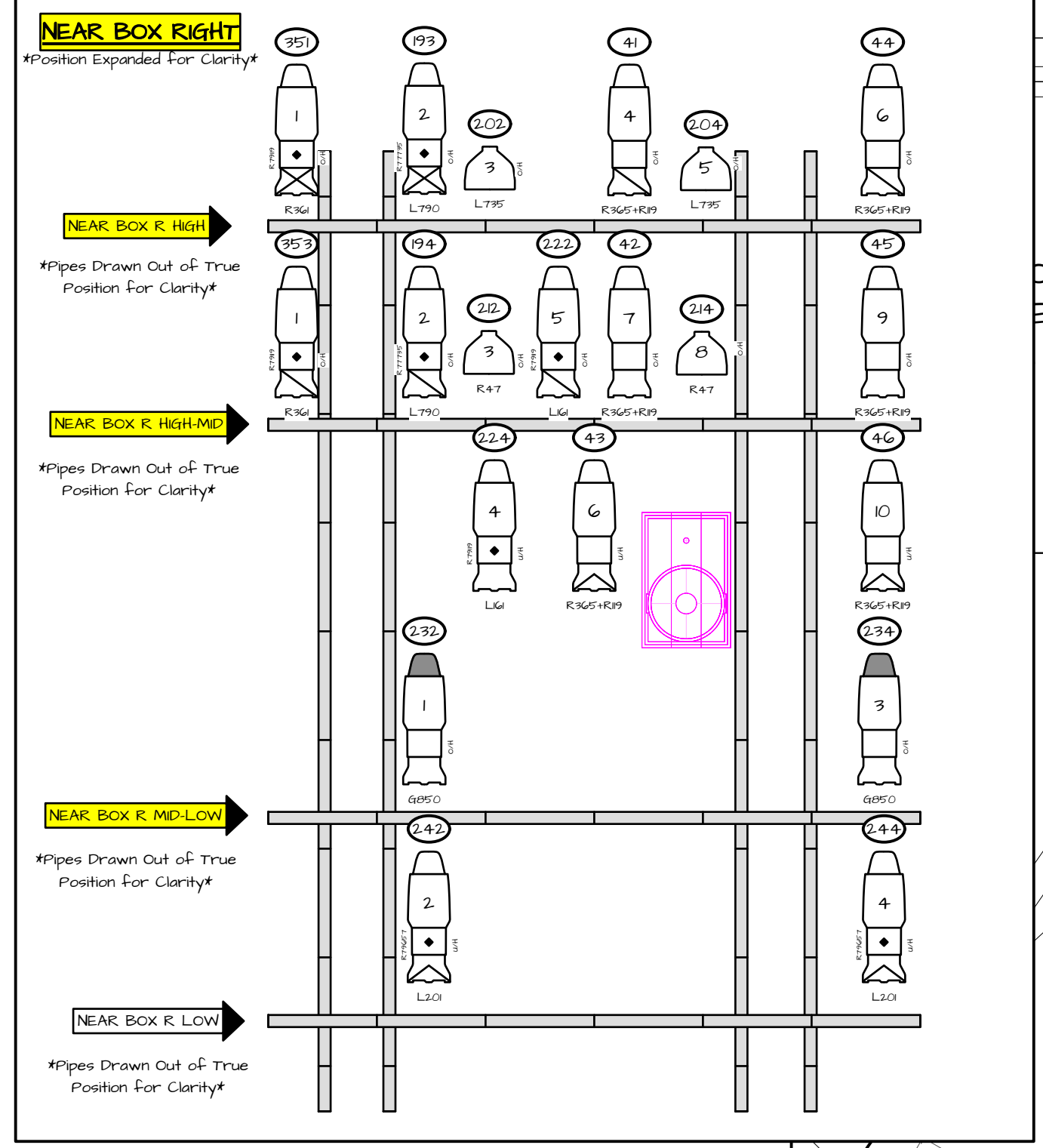
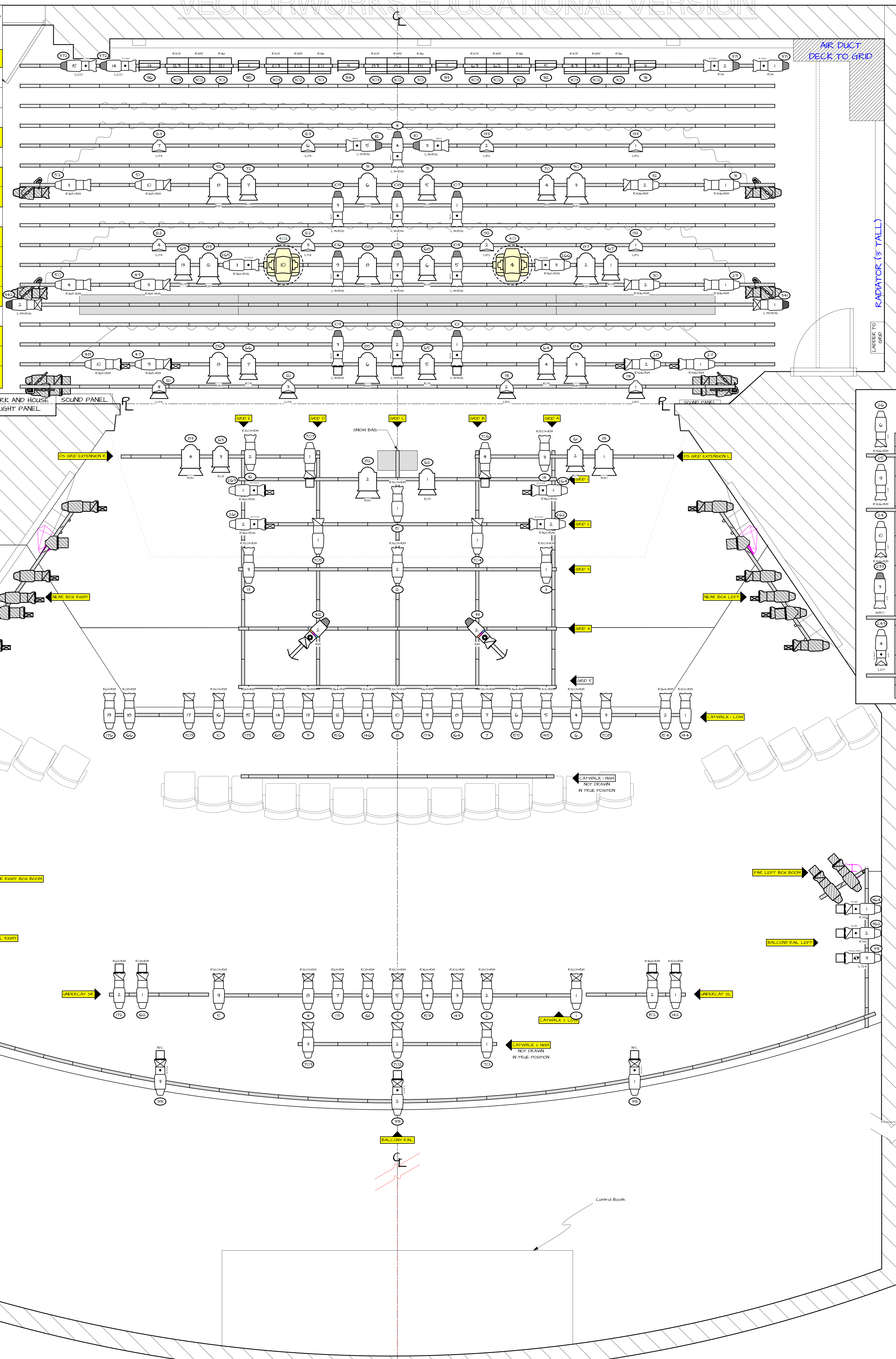


PIPE #	PIECE	TRIM HEIGHT
17	ELECTRIC	19'0"
16	CYC	19'0"
15	FULL STAGE BLACK	19'0"
14	BLACK SCRM & BORDER #3	19'0"
13	ELECTRIC	19'0"
12	---	19'0"
11	ELECTRIC	19'0"
10	ELECTRIC	19'0"
9	BORDER #2	19'0"
8	ELECTRIC	19'0"
7	ELECTRIC	19'0"
6	ELECTRIC	19'0"
5	SNOW DROP & ELECTRIC	19'0"
4	BORDER #1	19'0"
3	ELECTRIC	19'0"
2	ELECTRIC	19'0"
1	ELECTRIC	19'0"



### SYMBOL KEY

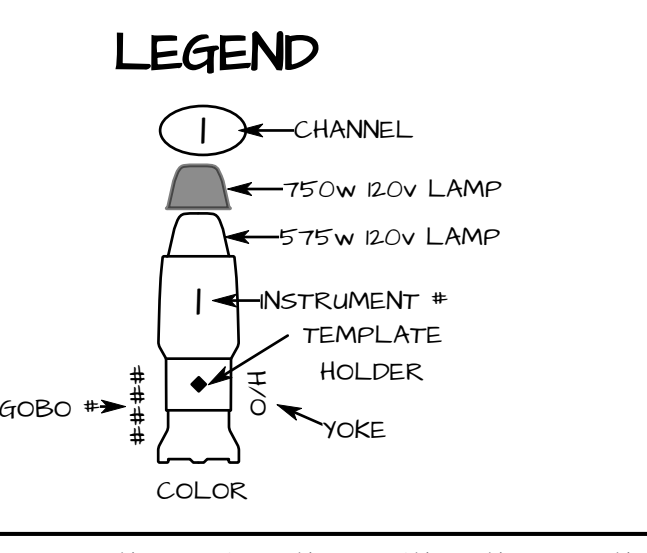
#### LIGHTING INSTRUMENTS

- ETC Source 4 19' 575w
- ETC Source 4 26' 575w
- ETC Source 4 36' 575w
- ETC Source 4 50' 575w
- ETC Source 4 36' 750w
- Seachanger ETC Source 4 26' 750w
- ETC Source 4 PAR MFL 575w
- ETC Source 4 PAR WFL 575w
- Strand 6' Fresnel 4kW
- Strand 8' Fresnel 2kW
- Altman Sky Cyc 3 Cell 4kW
- Philips Color Kinetics Colorblaze 72 1950w
- ChromaQ ColorForce 1 12 195w
- VaroLite VL2020 700w
- Chauvet COLORdash Accent Quad

#### ACCESSORIES

- 625' Top Hat
- 625' 1/2 Hat
- 75' Top Hat
- 75' 1/2 Hat
- 75' 4 Leaf Barn Door
- 10' 4 Leaf Barn Door
- City Theatrical 10
- City Theatrical DMX Iris
- Side Arm
- Gobo Rotator
- SFX
- Lock Solutions Unique 2.1 Hazer

- #### NOTES
- PLEASE DRIP ALL COLOR, GOBOS, AND ACCESSORIES PRIOR TO FOCUS.
  - FIXTURE YOKES INDICATED ON SPECIFIED FIXTURES.
  - ALL FIXTURES ON NEAR BOX LEFT & NEAR BOX RIGHT REQUIRE HALF HATS ON EVERY FIXTURE. FACE OF THE HALF HAT SHOULD BE POSITIONED TOWARDS THE AUDIENCE.
  - CYC FIXTURES ARE FOCUSED UPSTAGE TO WALL.
  - COLORFORCE 1 12 FIXTURES SHOULD BE LENSED WITH THE CYC LENS.
  - PLEASE PROVIDED EXTRA CUTS OF R192 & R19 FOR FOCUS.

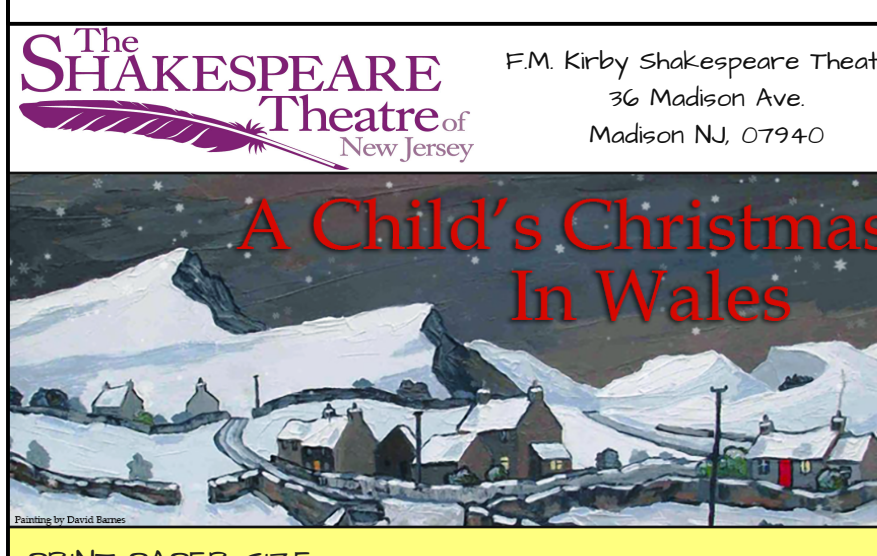


THIS DRAWING REPRESENTS VISUAL CONCEPTS AND CONSTRUCTION SUGGESTIONS ONLY. IT DOES NOT REPLACE THE KNOWLEDGE AND ADVICE OF A LICENSED STRUCTURAL ENGINEER. THE DESIGNERS ARE UNQUALIFIED TO DETERMINE THE STRUCTURAL APPROPRIATENESS OF THIS DESIGN AND WILL NOT ASSUME RESPONSIBILITY FOR IMPROPER ENGINEERING OR USE.

**MATTHEW J. WEISGABLE**  
LIGHTING DESIGN

**MJW**  
LIGHTING DESIGN

Director: BONNE J. MONTE  
 Scene Design: BONNE J. MONTE  
 Costume Design: PAUL CARANDA  
 Production Manager: STEVEN BECKEL  
 Production Stage Manager: ALISON COTE  
 Master Electrician: STEVEN BECKEL



#### FIXTURE MODES

ETC Seachanger 4 Channel [4]  
 ChromaQ ColorForce 1 12 RGB/AB Odd/Even On [10]  
 Color Kinetics Colorblaze 72 [36]  
 Chauvet Colordash Accent Quad 4ch [4]  
 VaroLite 2000 Spot Enhanced 4GB [17] + 3D

PRINT PAPER SIZE: **ARCH E**

REV	REVISION	DATE

SCALE: 1/2" = 1'-0"

DRAWN BY: Matt J. Weisgable

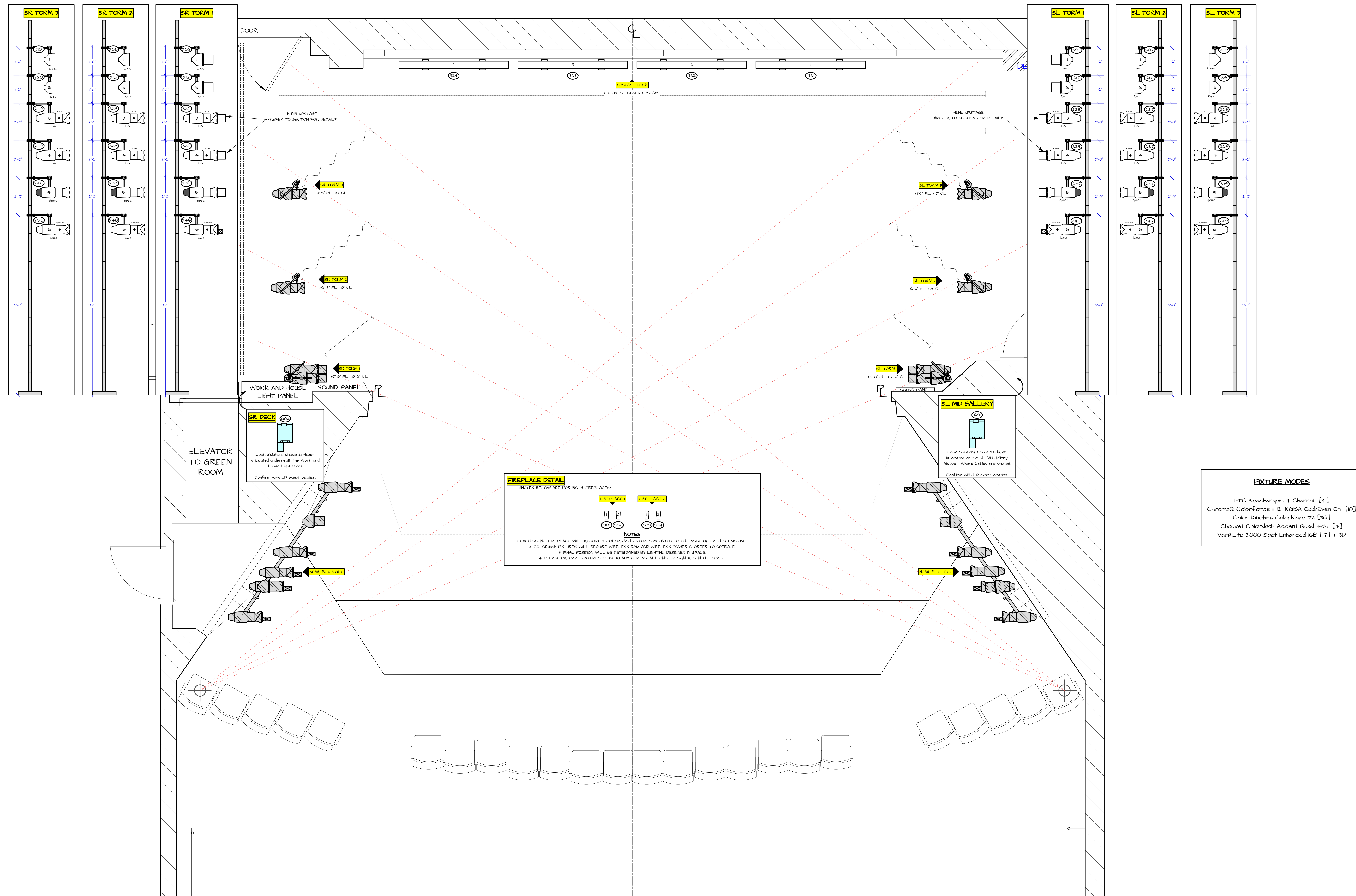
CREATED: 10/26/21

FILE: AChildsXmasinWales.vwx

PLATE: 1 OF 3

**OVERHEAD GROUNDPLAN**





### SYMBOL KEY

#### LIGHTING INSTRUMENTS

- ETC Source4 19' 575W
- ETC Source4 26' 575W
- ETC Source4 36' 575W
- ETC Source4 50' 575W
- ETC Source4 36' 750W
- Seachanger ETC Source4 26' 750W
- ETC Source4 PAR MFL 575W
- ETC Source4 PAR WFL 575W
- Strand 6' Fresnel 1kW
- Strand 8' Fresnel 2kW
- Altman Sky Cyc 3 Cell 1kW
- Philips Color Kinetics Colorblaze 72 990W
- ChromaQ ColorForce 1 12 195W
- VarMLite VL2202 700W
- Chauvet COLORdash Accent Quad

#### ACCESSORIES

- 6.25" Top Hat
- 7.5" Top Hat
- 7.5" 4 Leaf Barn Door
- 6.25" 1/2 Hat
- City Theatrical 10
- 10' 4 Leaf Barn Door
- Side Arm
- Gobo Rotator
- City Theatrical DMX Iris
- SFX
- Lock Solutions Unique 21 Hazer

- #### NOTES
1. ALL TORM POSITIONS USE 200' SCHEDULE 40 1/2" STEEL PIPE.
  2. TORM POSITIONS SHOULD USE FLANGES TO SECURE EACH PIPE TO THE STAGE DECK.
  3. ALL CABLE TO TORM POSITIONS MUST COME FROM OVERHEAD. NO CABLE ON STAGE DECK BACKSTAGE.
  4. PLEASE CONFIRM EXACT LOCATION OF COLORDASH ACCENT FIXTURES IN EACH PREPLACE WITH THE LD PRIOR TO INSTALLATION.
  5. PLEASE DROP ALL ACCESSORIES, GOBOS, AND COLOR PRIOR TO FOCUS.
  6. PLEASE PROVIDE EXTRA CUTS OF R32 & R19 FOR FOCUS.

#### FIXTURE MODES

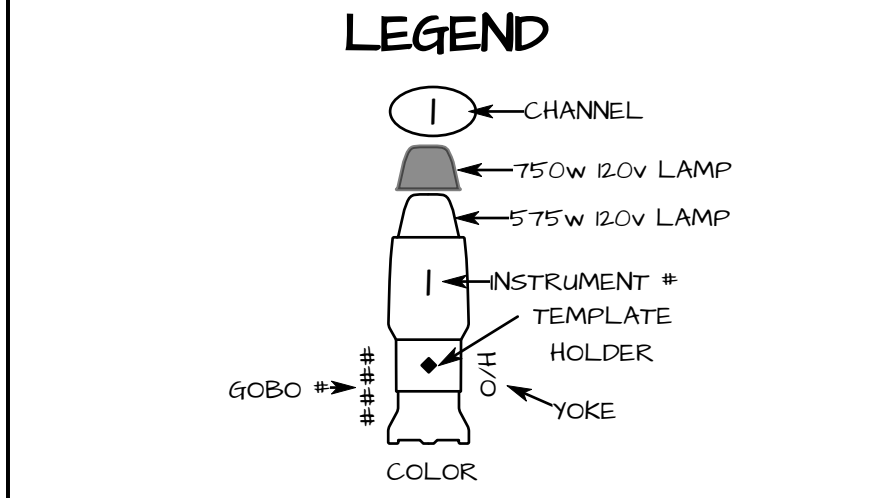
ETC Seachanger 4 Channel [4]  
 ChromaQ ColorForce 1 12 RGB/BA Odd/Even On [0]  
 Color Kinetics Colorblaze 72 [36]  
 Chauvet Colordash Accent Quad 4ch [4]  
 VarMLite 2000 Spot Enhanced IG [1] + 10

#### PREPLACE DETAIL

NOTES BELOW ARE FOR BOTH PREPLACES\*

PREPLACE 1	PREPLACE 2

NOTES:  
 1. EACH SCENE PREPLACE WILL REQUIRE 3 COLORDASH FIXTURES MOUNTED TO THE ROSE OF EACH SCENE UNIT.  
 2. COLORDASH FIXTURES WILL REQUIRE WIRELESS DMX AND WIRELESS POWER IN ORDER TO OPERATE.  
 3. FINAL POSITION WILL BE DETERMINED BY LIGHTING DESIGNER IN SPACE.  
 4. PLEASE PREPARE FIXTURES TO BE READY FOR INSTALL. ONCE DESIGNER IS IN THE SPACE.



THIS DRAWING REPRESENTS VISUAL CONCEPTS AND CONSTRUCTION SUGGESTIONS ONLY. IT DOES NOT REPLACE THE KNOWLEDGE AND ADVICE OF A LICENSED STRUCTURAL ENGINEER. THE DESIGNERS ARE UNWARRANTED TO DETERMINE THE STRUCTURAL APPROPRIATENESS OF THIS DESIGN AND WILL NOT ASSUME RESPONSIBILITY FOR IMPROPER ENGINEERING OR USE.

**MATTHEW J. WEISGABLE**  
 LIGHTING DESIGN  
 Matthew J. Weisgable  
 632 Benton Street  
 Philadelphia, PA 19107  
 E: mweisg@outlook.com  
 P: 215-740-0905

Director: BONNE J. MONTE  
 Scene Design: BONNE J. MONTE  
 Costume Design: PAUL GRANADA  
 Production Manager: STEVEN BECKEL  
 Production Stage Manager: ALISON COTE  
 Master Electrician: STEVEN BECKEL

**The Shakespeare Theatre of New Jersey**  
 174 Kirby Shakespeare Theatre  
 16 Madison Ave.  
 Madison NJ 07940



PRINT PAPER SIZE: ARCH E

	Drawing Index
	1 - OVERHEAD GP
	2 - DECK GP
	3 - SECTION

REV	REVISION	DATE

SCALE: 1/2" = 1'-0"  
 DRAWN BY: Matt J. Weisgable  
 CREATED: 10/26/21  
 FILE: AChildsXmasinWales.vvx

PLATE  
**2**  
 OF 3

DECK GROUNDPLAN



**SYMBOL KEY**

**LIGHTING INSTRUMENTS**

- 
- 
- 
- 
- 
- 
- 
- 
- 
- 
- 

Philips Color Kinetics Colorblaze 72. 930w

- 
- 
- 

**ACCESSORIES**

- 
- 
- 
- 
- 
- 
- 
- 
- 
- 
- 

**NOTES:**

1. SR FORM 2 & SR FORM 3 - PIPE POSITIONED BEHIND THE DOWNSTAGE LEG FIXTURES ARE SEPARATED OUT INTO THE OPEN WING SPACE.
2. PLEASE DROP ALL ACCESSORIES, GOBOS, AND COLOR PRIOR TO FOCUS.
3. PLEASE PROVIDE EXTRA CUTS OF R192 & R19 FOR FOCUS.

**LEGEND**

- 
- 
- 
- 
- 
- 
- 
- 
- 

THIS DRAWING REPRESENTS VISUAL CONCEPTS AND CONSTRUCTION SUGGESTIONS ONLY. IT DOES NOT REPLACE THE KNOWLEDGE AND JUDICE OF A LICENSED STRUCTURAL ENGINEER. THE DESIGNERS ARE UNQUALIFIED TO DETERMINE THE STRUCTURAL APPROPRIATENESS OF THIS DESIGN AND WILL NOT ASSUME RESPONSIBILITY FOR IMPROPER ENGINEERING OR USE.

**MATTHEW J. WEISGABLE**

**MJW**  
LIGHTING DESIGN

Director: BONNE J. MONTE  
 Scene Design: BONNE J. MONTE  
 Costume Design: PAUL CARANDA  
 Production Manager: STEVEN BECKEL  
 Master Electrician: STEVEN BECKEL

**The Shakespeare Theatre of New Jersey**  
 87M Kirby Shakespeare Theatre  
 16 Madison Ave.  
 Madison NJ 07940



PRINT PAPER SIZE: **ARCH E**

Drawing Index	
1 - OVERHEAD GP	
2 - DECK GP	
3 - SECTION	
FINAL PLOT	1/20/21
REV	REVISION DATE

SCALE: 1/2" = 1'-0"  
 DRAWN BY: Matt J. Weisgable  
 CREATED: 10/26/21  
 FILE: AChildsXmasinWales.vwx

**SECTION**

**PIPE SCHEDULE**

1	2	3	4	5	6	7	8	9	10	11	12	13	14	15	16	17	PIPE #
198"	198"	198"	198"	198"	198"	198"	198"	198"	198"	198"	198"	198"	198"	198"	198"	198"	PIECE
ELECTRIC	ELECTRIC	ELECTRIC	BORDER #1	SNOW PROP & ELECTRIC	ELECTRIC	ELECTRIC	ELECTRIC	ELECTRIC	BORDER #2	ELECTRIC	ELECTRIC	---	ELECTRIC	BLACK SCUM & BORDER #3	PULL STAGE BLACK	CYC	ELECTRIC

